

# Kunststoffe

**Oberflächen** Kunststoffe

**Surfaces** Plastic

**Surfaces** Stratifié

**Afwerkingen** Kunststof

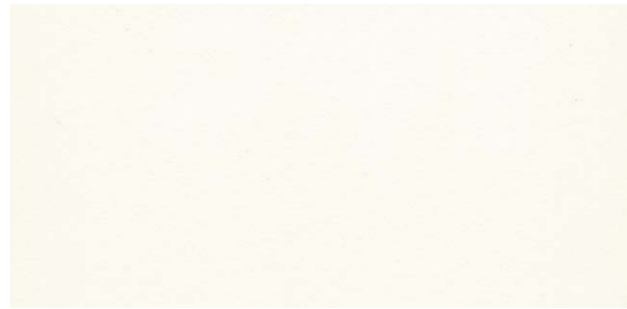


**Oberflächen** Kunststoffe

**Surfaces** Plastic

**Surfaces** Stratifié

**Afwerkingen** Kunststof



**WI**

Reinweiß / Pure white / Blanc pur / Wit



**GW**

Grauweiß / Grey-white / Blanc gris / Gebroken wit



**GK**

Grau / Grey / Gris / Grijs



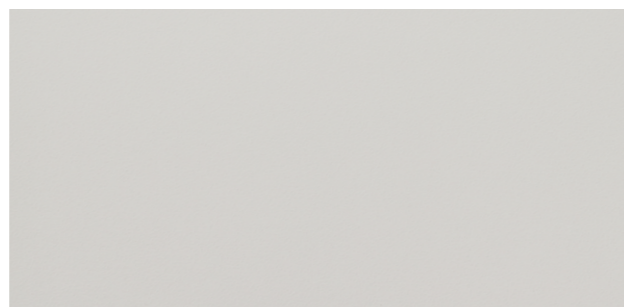
**KT**

Alufarbig / Aluminium-coloured /  
Couleur alu / Aluminiumkleurig



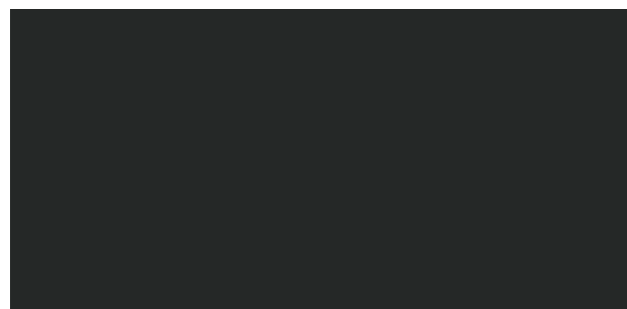
**MA**

Anthrazit / Anthracite / Anthracite / Antraciet



**KH**

Lichtgrau / Light-grey / Gris clair / Lichtgrijs



**SC**

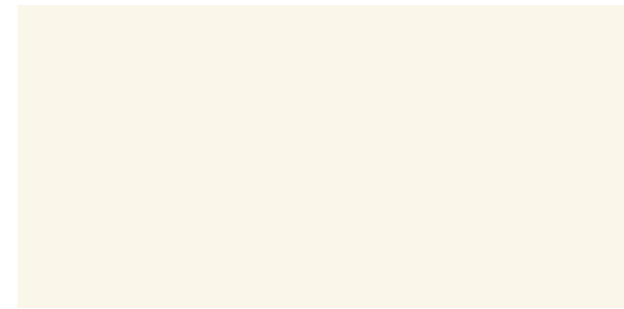
Schwarz / Black / Noir / Zwart

**Oberflächen** Fenix Soft Touch

**Surfaces** Fenix Soft Touch

**Surfaces** Fenix Soft Touch

**Afwerkingen** Fenix Soft Touch



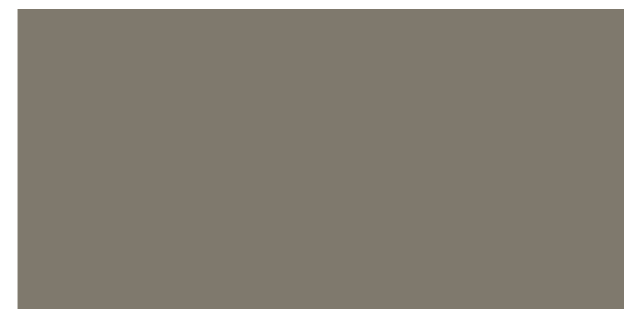
**7M**

Weiß / White / Blanc / Wit



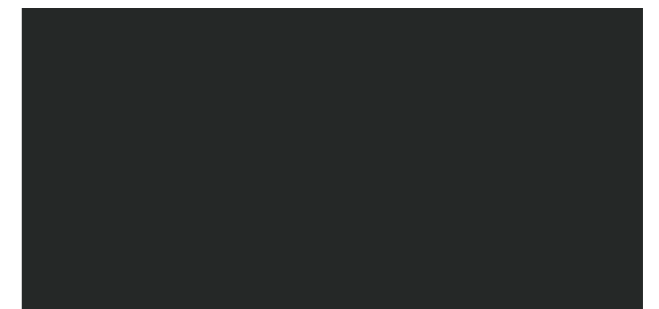
**7I**

Dunkelbeige / Dark Beige / Beige Foncé / Donkerbeige



**7J**

Dunkelgrau / Dark Grey / Gris Foncé / Donkergrijs



**7V**

Schwarz / Black / Noir / Zwart

**Oberflächen** Hochglanz

**Surfaces** High-gloss

**Surfaces** Brillant

**Afwerkingen** Hoogglans

Nur bei ACTA.PLUS

Only for ACTA.PLUS

Uniquement pour ACTA.PLUS

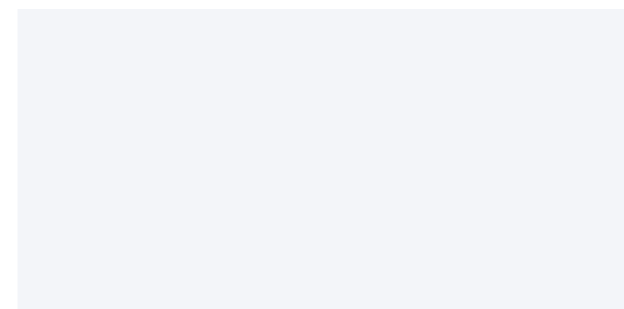
Alleen bij ACTA.PLUS

**HW, HZ**

**HW, HZ**

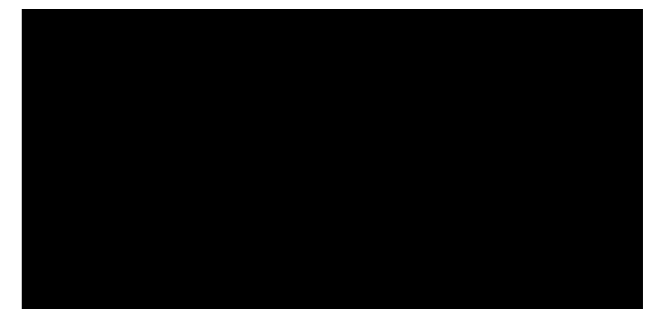
**HW, HZ**

**HW, HZ**



**HW**

Weiß / White / Blanc / Wit



**HZ**

Schwarz / Black / Noir / Zwart

**Oberflächen** Kunststoffe Dekore

**Surfaces** Plastic decor

**Surfaces** Stratifié décors

**Afwerkingen** Kunststof decors



**A0**

Ahorn Dekor / Maple decor / Árable décor / Ahorn decor



**MB**

Buche Dekor / Beech decor / Hêtre décor / Beuken decor



**NM**

Nussbaum Dekor / Walnut decor /  
Noyer décor / Noten decor



**ET**

Eiche natur Dekor / Oak natural decor /  
Chêne naturel décor / Eiken naturel decor



**AA**

Akazie Dekor / Acacia decor / Acacia décor / Acacia decor

**Oberflächen** Trendkollektion

**Surfaces** Trend collection finishes

**Surfaces** Finitions collection tendance

**Afwerkingen** Oppervlakken trendcollectie



**9L**

Eiche Halifax natur / Halifax Oak Natural / Halifax chêne  
naturel / Halifax eiken naturel



**9S**

Beton Optik / Concrete look / Aspect béton / Betonlook



**9T**

Beige / Beige / Beige / Beige



**9R**

Mittelgrau / Medium grey / Gris moyen / Middelgrijs



# Furniere

**Oberflächen** Furniere

**Surfaces** Veneers

**Surfaces** Placages

**Afwerkingen** Fineer



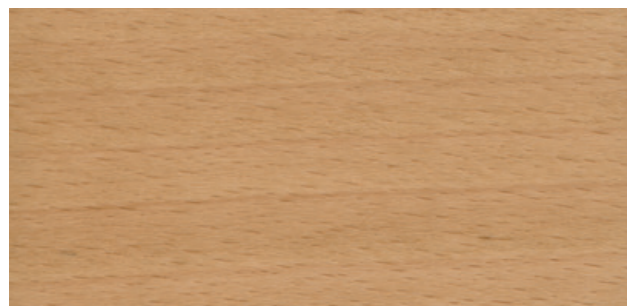
---

**Oberflächen** Furniere

**Surfaces** Veneers

**Surfaces** Placages

**Afwerkingen** Fineer



---

**BH**

Buche ungebeizt / beech unstained /  
hêtre non teinté / beuken ongebeitst



---

**EN**

Eiche natur / oak natural /  
chêne nature / eiken natuur

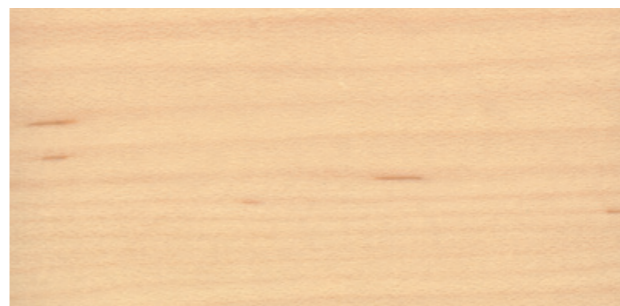
---

**Oberflächen** Furniere

**Surfaces** Veneers

**Surfaces** Placages

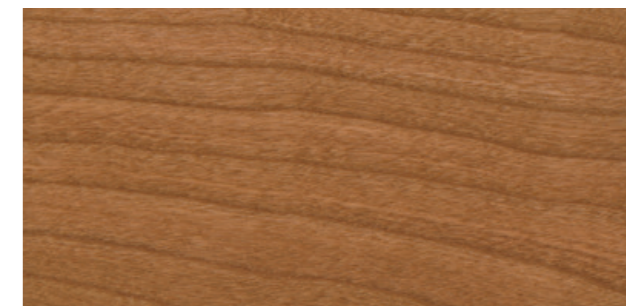
**Afwerkingen** Fineer



---

**AH**

Kanad. Ahorn ungebeizt / Canadian maple unstained /  
érable canad. non teinté / canad. ahorn ongebeitst



---

**CK**

Amerik. Kirschbaum / American cherry /  
cerisier américain / amerik. kersen



---

**SN**

Amerik. Nussbaum natur / American walnut natural /  
noyer américain nature / amerik. noten natuur

**Deutschland**

König + Neurath AG  
Industriestraße 1-3  
61184 Karben  
T +49 6039 483-0  
info@koenig-neurath.de

**Great Britain**

K + N International Ltd.  
52 Britton Street  
London EC1M 5UQ  
T +44 20 74909340  
info@koenig-neurath.co.uk

**Nederland**

König + Neurath Nederland  
Beethovenstraat 530  
1082 PR Amsterdam  
T +31 20 4109410  
info@konig-neurath.nl

**France**

König + Neurath AG  
53, rue de Chateaudun  
75009 Paris  
T +33 1 44632393  
info@koenig-neurath.fr

**Schweiz**

König + Neurath (Schweiz) GmbH  
St. Gallerstrasse 106 d  
CH-9032 Engelburg / St. Gallen  
T +41 52 7702242  
info@koenig-neurath.de

**Österreich**

König + Neurath AG  
Gonzagagasse 1 / Morzinplatz  
1010 Wien  
T +43 676 4117512  
info@koenig-neurath.de

# Metall

**Oberflächen** Pulverbeschichtung  
Metall

**Surfaces** Powder-coating  
metal

**Surfaces** Finition époxydée  
métal

**Afwerkingen** Poedercoating  
metaal





**Oberflächen** Pulverbeschichtung Metall

**Surfaces** Powder-coating metal

**Surfaces** Finition époxydée métal

**Afwerkingen** Poedercoating metaal



**AL**

Alufarbig /  
Aluminium-coloured /  
Couleur alu /  
Aluminiumkleurig



**AM**

Anthrazit Metallic /  
Anthracite metallic /  
Anthracite métallique /  
Antraciet metallic



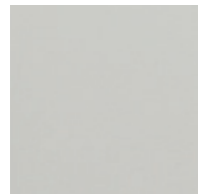
**GK**

Grau / Grey / Gris / Grijs



**GW**

Grauweiß / Grey-white /  
Blanc gris / Gebroken wit



**KH**

Lichtgrau / Light-grey /  
Gris clair / Lichtgrijs



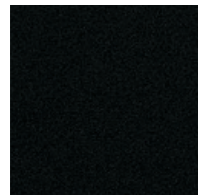
**KS**

Schwarz RAL 9011 /  
Black RAL 9011 /  
Noir RAL 9011 /  
Zwart RAL 9011



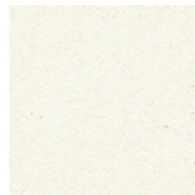
**WI**

Reinweiß / Pure white /  
wBlanc / Wit



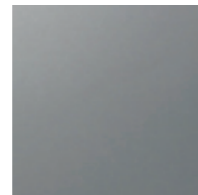
**KSS**

Struktur Schwarz /  
Textured finish black /  
Noir structuré /  
Structuur zwart



**WIS**

Struktur Reinweiß /  
Textured finish pure white /  
Blanc pur structuré /  
Structuur zuiver wit



**PK**

Metall Natur /  
Metal Natural /  
Métal naturel /  
Metaal naturel

**Oberflächen** Metall (veredelt)

**Surfaces** Powder-coating metal (processed)

**Surfaces** Finition époxydée métal (traitées)

**Afwerkingen** Poedercoating metaal (veredeld)



**GC**

Chrom / Chrome /  
Chrome / Chroom



**6M**

Mattchrom / Matt chrome /  
Chrome mat / Chroom mat



**AP**

Alu poliert /  
Aluminium polished /  
Alu poli /  
Alu gepolijst

**Deutschland**

König + Neurath AG  
Industriestraße 1-3  
61184 Karben  
T +49 6039 483-0  
info@koenig-neurath.de

**Great Britain**

K + N International Ltd.  
52 Britton Street  
London EC1M 5UQ  
T +44 20 74909340  
info@koenig-neurath.co.uk

**Nederland**

König + Neurath Nederland  
Beethovenstraat 530  
1082 PR Amsterdam  
T +31 20 4109410  
info@konig-neurath.nl

**France**

König + Neurath AG  
53, rue de Chateaudun  
75009 Paris  
T +33 1 44632393  
info@koenig-neurath.fr

**Schweiz**

König + Neurath (Schweiz) GmbH  
St. Gallerstrasse 106 d  
CH-9032 Engelburg / St. Gallen  
T +41 52 7702242  
info@koenig-neurath.de

**Österreich**

König + Neurath AG  
Gonzagagasse 1 / Morzinplatz  
1010 Wien  
T +43 676 4117512  
info@koenig-neurath.de

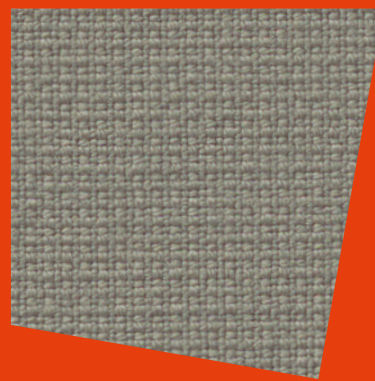
# STANDARD 28

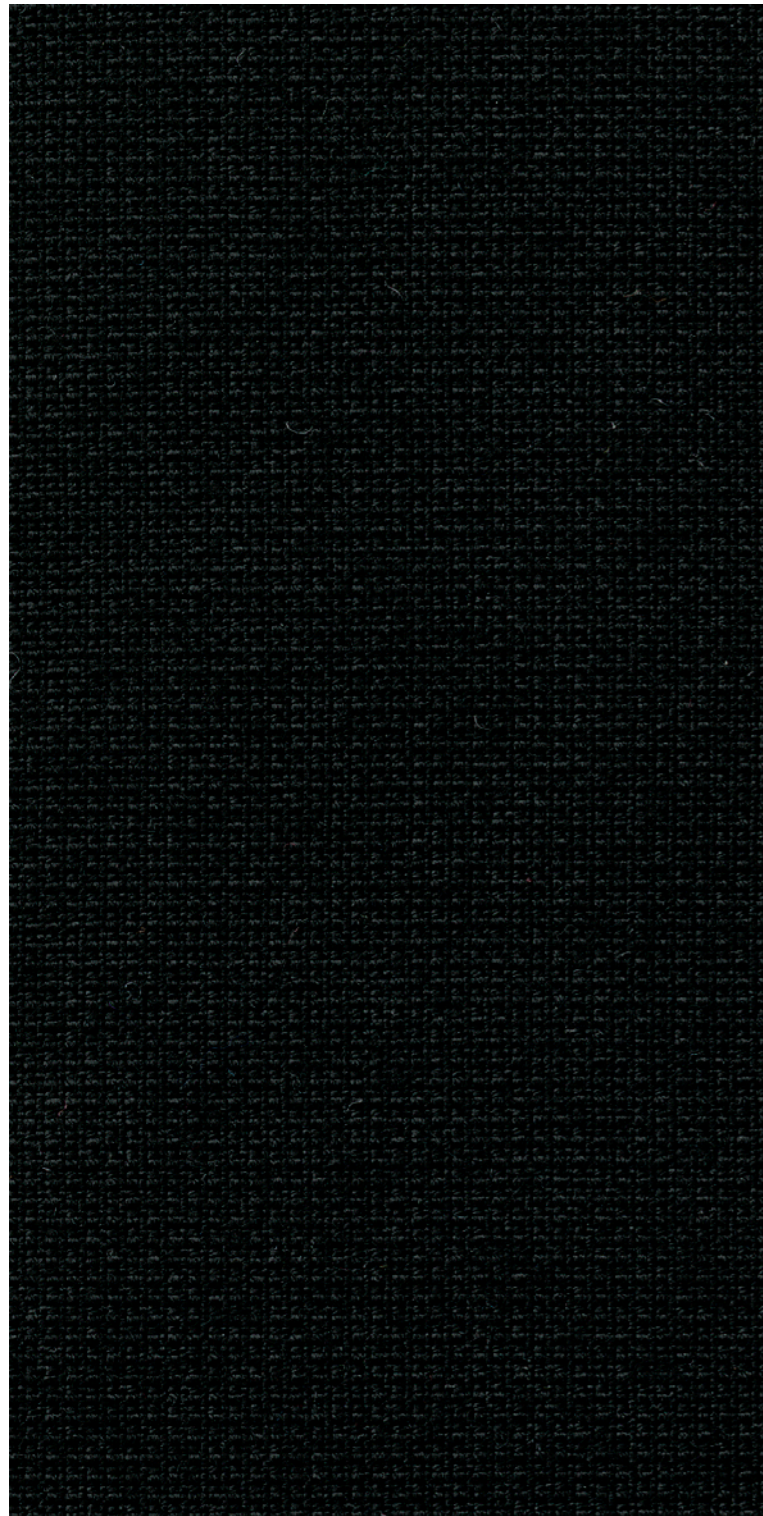
**Stoffe** Sitzmöbel, Raumsysteme  
und modulare Loungesysteme

**Fabrics** Seating, room systems  
and modular lounge systems

**Tissus** Sièges, cloisons toutes  
portantes et systèmes lounge  
modulaires

**Stoffen** Zitmeubilair, wandsysteemen  
en modulaire loungesystemen





**Fame, Gabriel**  
**95 % Neuseelandwolle, 5 % Polyamid**  
Breite 140 cm, Längengewicht ca. 630 g/lfd. M.  
Scheuerfestigkeit über 200.000 Scheuertouren  
nach Martindale  
Brandverhalten getestet nach DIN EN 1021,  
Teil 1 und 2  
Schadstofffrei nach Öko-Text  
100 % schwermetallfrei  
EU Ecolabel

**Fame, Gabriel**  
**95 % New Zealand wool, 5 % polyamide**  
140 cm wide, approx. weight 630 g/lm  
Wear resistance tested to over 200.000 rub  
cycles on the Martindale test  
Flammability tested to DIN EN 1021,  
part 1 and 2  
Free of harmful substances in acc. with Oeko-Text  
100 % free of heavy metals  
EU Ecolabel

**Fame, Gabriel**  
**95 % laine de Nouvelle-Zélande, 5 % polyamide**  
Largeur 140 cm, poids au mètre linéaire env. 630 g  
Résistance à l'usure: plus de 200.000 tours  
Martindale  
Comportement au feu testé selon DIN EN 1021,  
parties 1 et 2  
Exempt de substances toxiques selon le  
label « Öko-Text »  
100 % exempt de métaux lourds  
écolabel UE

**Fame, Gabriel**  
**95 % Nieuw-Zeelandse wol, 5 % polyamide**  
140 cm breed, gewicht ca. 630 per  
strekende meter  
Slijtvastheid 200.000 toeren Martindale  
Gestest op brandwerendheid volgens  
DIN EN 1021, deel 1 en 2  
Vrij van schadelijke stoffen conform Eco-Text  
100 % vrij van zware metalen  
Voldoet aan het Europees ecolabel



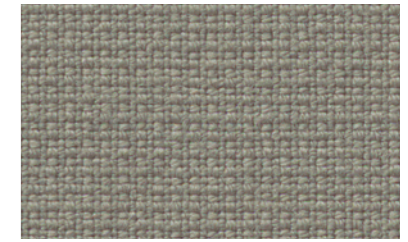
62

schwarz / black / noir / zwart



91

anthrazit / anthracite / anthracite /  
antraciet



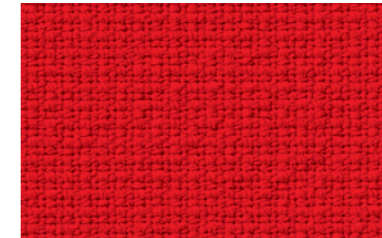
53

hellgrau / light grey / gris clair /  
lichtgrijs



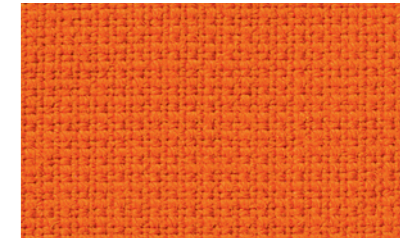
29

dunkelbeige / dark beige /  
beige foncé / donkerbeige



60

rot / red / rouge / rood



82

orange / orange / orange / oranje



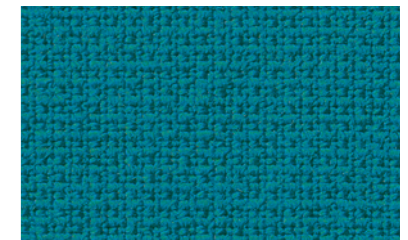
85

rosé / rose / rosé / roze



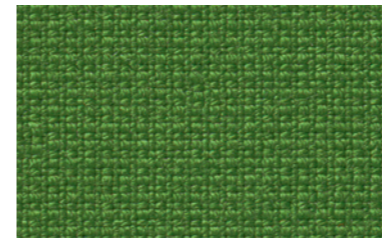
42

dunkelblau / dark blue /  
bleu foncé / donkerblauw



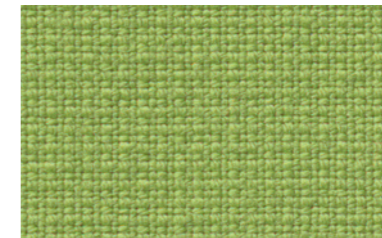
46

türkisblau / turquoise blue /  
bleu turquoise / turkooisblauw



33

dunkelgrün / dark green /  
vert foncé / donkergroen



34

apfelgrün / apple green /  
vert pomme / applegroen

**Deutschland**

König + Neurath AG  
Büromöbel-Systeme  
Industriestraße 1-3  
61184 Karben  
Tel.: +49 (0)6039 483-0  
e-mail: [info@koenig-neurath.de](mailto:info@koenig-neurath.de)  
[www.koenig-neurath.de](http://www.koenig-neurath.de)

**Great Britain**

K + N International  
(Office Systems) Ltd  
52 Britton Street  
London EC1M 5UQ  
Tel.: +44 (0)20 74909340  
e-mail: [info@koenig-neurath.co.uk](mailto:info@koenig-neurath.co.uk)  
[www.koenig-neurath.co.uk](http://www.koenig-neurath.co.uk)

**Nederland**

König + Neurath Nederland  
Office Furniture  
Beethovenstraat 530  
1082 PR Amsterdam  
Tel.: +31 (0)20 4109410  
e-mail: [info@konig-neurath.nl](mailto:info@konig-neurath.nl)  
[www.konig-neurath.nl](http://www.konig-neurath.nl)

**France**

König + Neurath AG  
Showroom Paris  
66, rue de la Victoire  
75009 Paris  
Tel.: +33 (0)1 44 63 23 93  
e-mail: [info@koenig-neurath.fr](mailto:info@koenig-neurath.fr)  
[www.koenig-neurath.fr](http://www.koenig-neurath.fr)

**Schweiz**

König + Neurath (Schweiz) GmbH  
Büromöbel-Systeme  
St. Gallerstrasse 106 d  
CH-9032 Engelburg / St. Gallen  
Tel.: +41 (0)52 770 22 42  
e-mail: [info@koenig-neurath.de](mailto:info@koenig-neurath.de)  
[www.koenig-neurath.de](http://www.koenig-neurath.de)

# ECONOMY

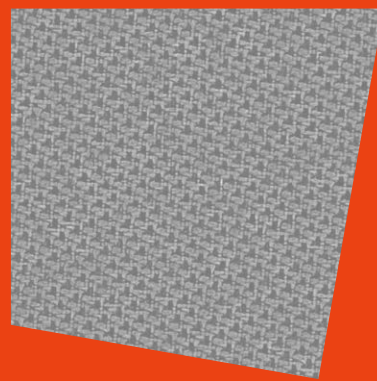
# 13

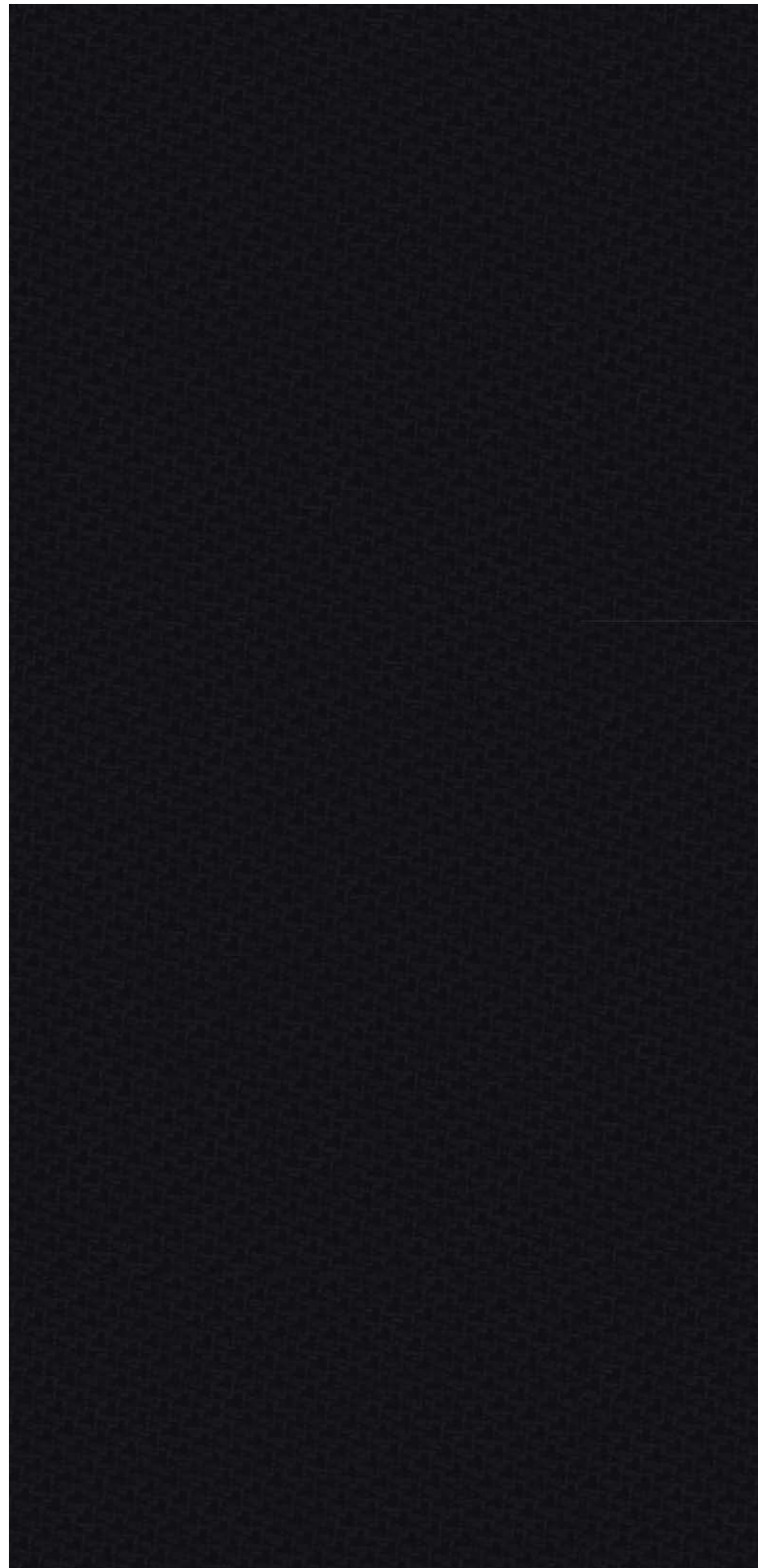
**Stoffe** Sitzmöbel, Raumsysteme  
und modulare Loungesysteme

**Fabrics** Seating, room systems  
and modular lounge systems

**Tissus** Sièges, cloisons toutes  
portantes et systèmes lounge  
modulaires

**Stoffen** Zitmeubilair, wandsystemen  
en modulaire loungesystemen





**Tonal, Gabriel**  
**99% recyceltes Post-Consumer-Polyester**  
**1% Polyester**

Breite 140 cm, Längengewicht ca. 315 g/ldf.M.  
Scheuerfestigkeit über 100.000 Scheuertouren  
nach Martindale  
Brandverhalten getestet nach DIN EN 1021,  
Teil 1 und 2  
EU Ecolabel  
Schadstofffreiheit nach Öko-TEX Standard 100

**Zur Kombination mit Raumgliederungselemen-  
ten empfehlen wir die Stoffgruppe 71**  
**(Tonal Screen, Gabriel)**

**Tonal, Gabriel**  
**99% recycled Post-Consumer-Polyester**  
**1% polyester**

Width 140 cm, weight per length approx. 315 g/m  
Abrasion resistance more than 100,000 cycles on  
the Martindale rub test  
Fire resistance properties tested in accordance  
with DIN EN 1021, parts 1 and 2  
EU Ecolabel  
Free of harmful substances in accordance with  
Oeko-TEX Standard 100

**We recommend fabric group 71 in combination  
with screen systems**  
**(Tonal Screen, Gabriel)**

**Tonal, Gabriel**  
**99% Post-Consumer-Polyester recyclé**  
**1% polyester**

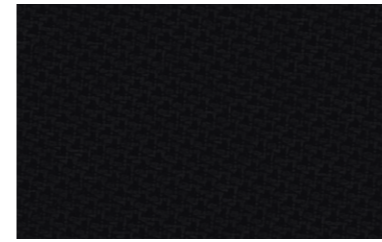
Largeur : 140 cm,  
poids au mètre : environ 315 g / ml  
Résistance à l'usure : plus de 100.000 tours  
Martindale  
Comportement au feu testé selon la norme  
DIN EN 1021, parties 1 et 2  
EU Ecolabel  
Exempt de substances toxiques selon le label  
« Öko-TEX Standard 100 »

**Les éléments d'organisation de l'espace  
s'associent au mieux avec le groupe de tissus 71**  
**(Tonal Screen, Gabriel)**

**Tonal, Gabriel**  
**99% gerecycled Post-Consumer polyester**  
**1% polyester**

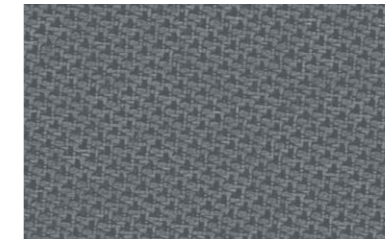
Breedte 140 cm, gewicht per strekkende  
meter 315 g  
Slijtvastheid 100.000 toeren Martindale  
Brandeigenschappen getest volgens DIN EN 1021,  
deel 1 en 2  
EU Ecolabel  
Vrij van schadelijke stoffen conform ECO-TEX  
standaard 100

**Voor de combinatie met ruimteverdelingsele-  
menten raden wij stofgroep 71 aan**  
**(Tonal Screen, Gabriel)**



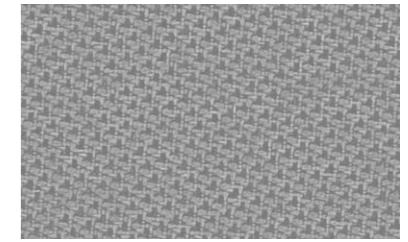
**62**

schwarz / black / noir / zwart



**55**

dunkelgrau / dark grey /  
gris foncé / donkergrijs



**57**

grau / grey / gris / grijs



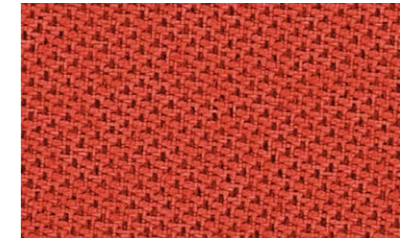
**25**

beige / beige / beige / beige



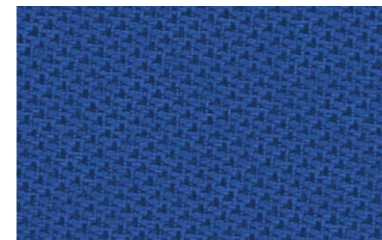
**71**

gelb / yellow / jaune / geel



**60**

rot / red / rouge / rood



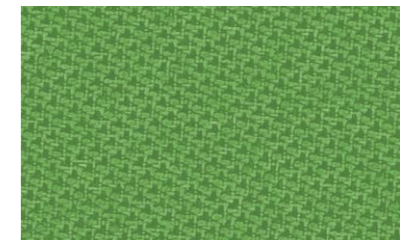
**39**

blau / blue / bleu / blauw



**43**

hellblau / light blue / bleu clair /  
lichtblauw



**32**

grün / green / vert / groen



**31**

hellgrün / light green / vert clair /  
lichtgroen





# ECONOMY

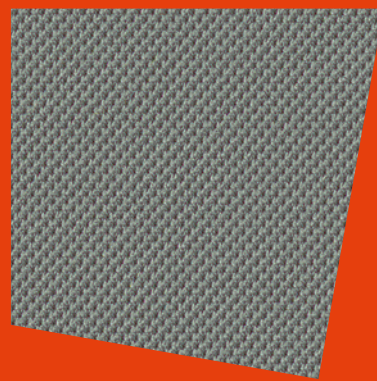
## 14

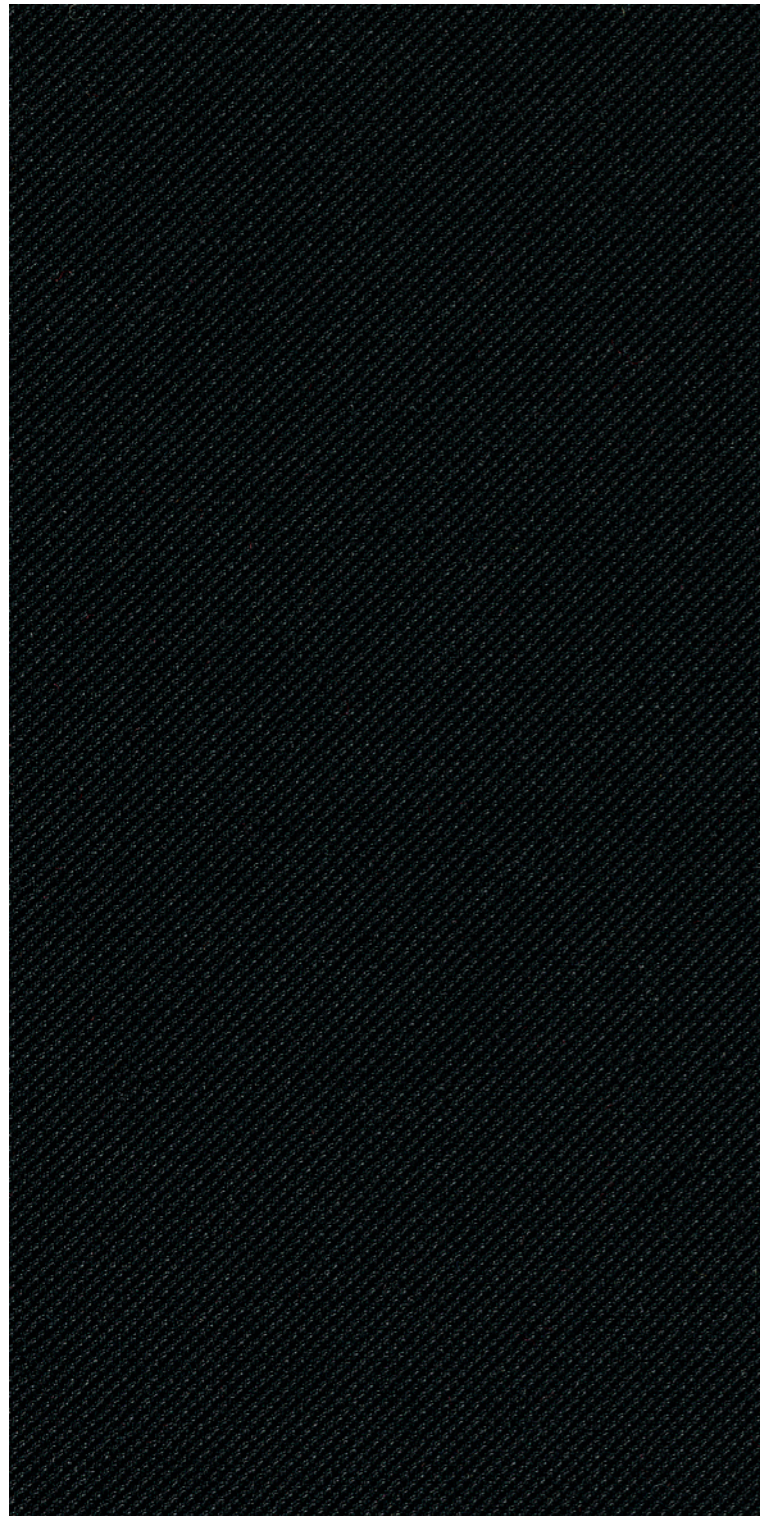
**Stoffe** Sitzmöbel, Raumsysteme und modulare Loungesysteme

**Fabrics** Seating, room systems and modular lounge systems

**Tissus** Sièges, cloisons toutes portantes et systèmes lounge modulaires

**Stoffen** Zitmeubilair, wandsystemen en modulaire loungesystemen





**Atlantic, Gabriel  
100 % Polyester**

Breite 150 cm, Längengewicht ca. 530 g/dfd. M.  
Scheuerfestigkeit über 110.000 Scheuertouren  
nach Martindale  
Brandverhalten getestet nach DIN EN 1021,  
Teil 1 und 2  
EU Ecolabel  
Schadstofffrei nach Öko-Text Standard 100  
100% Schwermetallfrei

**Zur Kombination mit Raumgliederungs-  
elementen empfehlen wir die Stoffgruppe 82.**

**Atlantic, Gabriel  
100 % polyester**

150 cm wide, approx. weight 530 g/lm  
Wear resistance tested to over 110.000 rub  
cycles on the Martindale test  
Flammability tested to DIN EN 1021,  
parts 1 and 2  
EU Ecolabel  
Free of harmful substances in acc. with  
Oeko-Text Standard 100  
100% free of heavy metals

**For combination with screens, we recommend  
the use of fabric group 82.**

**Atlantic, Gabriel  
100 % polyester**

Largeur : 150 cm, poids au mètre :  
environ 530 g / ml  
Résistance à l'usure : plus de 110.000 tours  
Martindale  
Comportement au feu testé selon la  
norme DIN EN 1021, parties 1 et 2  
écolabel UE  
Exempt de substances toxiques selon le  
label « Öko-Text Standard 100 »  
100 % exempt de métaux lourds

**Nous recommandons le groupe de tissus 82  
pour combiner avec les cloisons modulaires.**

**Atlantic, Gabriel  
100 % polyester**

Breedte 150 cm, gewicht per  
strekende meter ca. 530 g  
Slijtvastheid 110.000 toeren Martindale  
Brandgedrag getest volgens DIN EN 1021,  
deel 1 en 2  
voldoet aan het Europees ecolabel  
Vrij van schadelijke stoffen conform  
Eco-Text standaard 100  
100% vrij van zware metalen

**Voor de combinatie met scheidingswanden  
raden wij stofgroep 82 aan.**



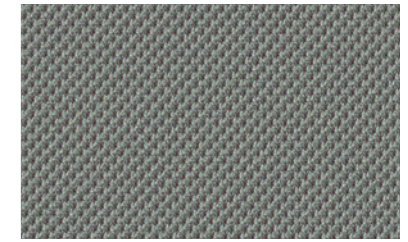
62

schwarz / black / noir / zwart



91

anthrazit / anthracite / anthracite /  
antraciet



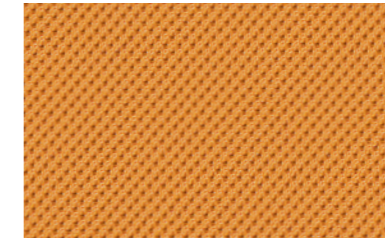
53

grau / grey / gris / grijs



82

orange / orange / orange / oranje



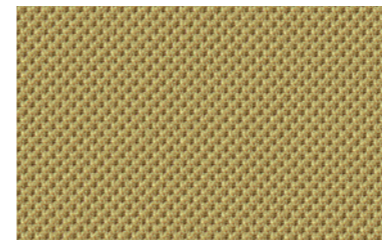
71

gelb / yellow / jaune / geel



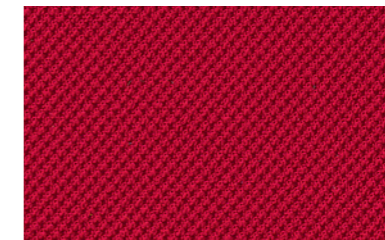
25

beige / beige / beige / beige



70

ocker / ochre / ocre / oker



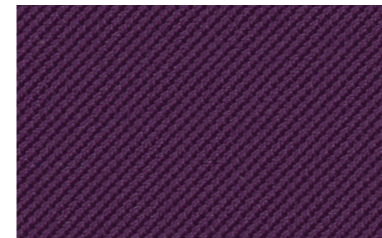
61

rot / red / rouge / rood



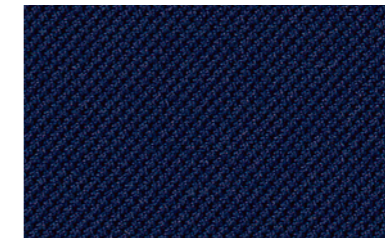
85

rosé / rose / rosé / roze



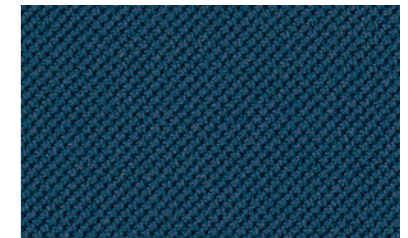
67

brombeer / blackberry / mûre /  
bramen



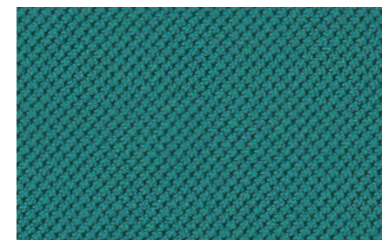
42

dunkelblau / dark blue /  
bleu foncé / donkerblauw



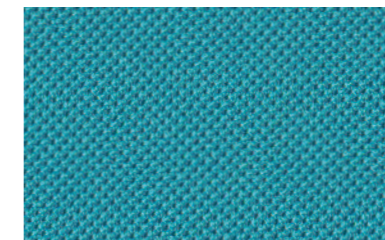
47

petrolblau / petrol blue /  
bleu pétrole / petrolblauw



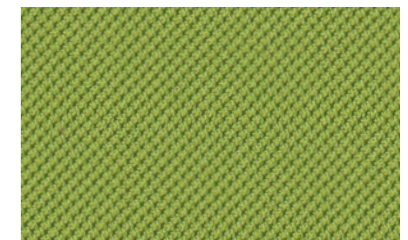
30

seegrün / sea green /  
vert d'eau / zeegroen



43

hellblau / light blue / bleu clair /  
lichtblauw



34

apfelgrün / apple green /  
vert pomme / applegroen

**Deutschland**

König + Neurath AG  
Büromöbel-Systeme  
Industriestraße 1-3  
61184 Karben  
Tel.: +49 (0)6039 483-0  
e-mail: [info@koenig-neurath.de](mailto:info@koenig-neurath.de)  
[www.koenig-neurath.de](http://www.koenig-neurath.de)

**Great Britain**

K + N International  
(Office Systems) Ltd  
52 Britton Street  
London EC1M 5UQ  
Tel.: +44 (0)20 74909340  
e-mail: [info@koenig-neurath.co.uk](mailto:info@koenig-neurath.co.uk)  
[www.koenig-neurath.co.uk](http://www.koenig-neurath.co.uk)

**Nederland**

König + Neurath Nederland  
Office Furniture  
Beethovenstraat 530  
1082 PR Amsterdam  
Tel.: +31 (0)20 4109410  
e-mail: [info@konig-neurath.nl](mailto:info@konig-neurath.nl)  
[www.konig-neurath.nl](http://www.konig-neurath.nl)

**France**

König + Neurath AG  
Showroom Paris  
66, rue de la Victoire  
75009 Paris  
Tel.: +33 (0)1 44 63 23 93  
e-mail: [info@koenig-neurath.fr](mailto:info@koenig-neurath.fr)  
[www.koenig-neurath.fr](http://www.koenig-neurath.fr)

**Schweiz**

König + Neurath (Schweiz) GmbH  
Büromöbel-Systeme  
St. Gallerstrasse 106 d  
CH-9032 Engelburg / St. Gallen  
Tel.: +41 (0)52 770 22 42  
e-mail: [info@koenig-neurath.de](mailto:info@koenig-neurath.de)  
[www.koenig-neurath.de](http://www.koenig-neurath.de)

# ECONOMY

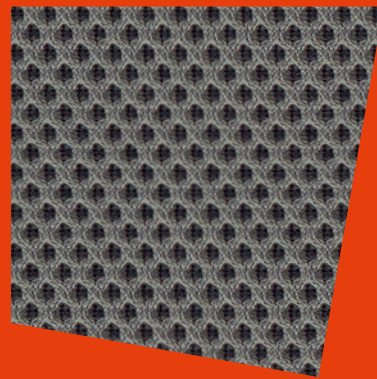
# 16

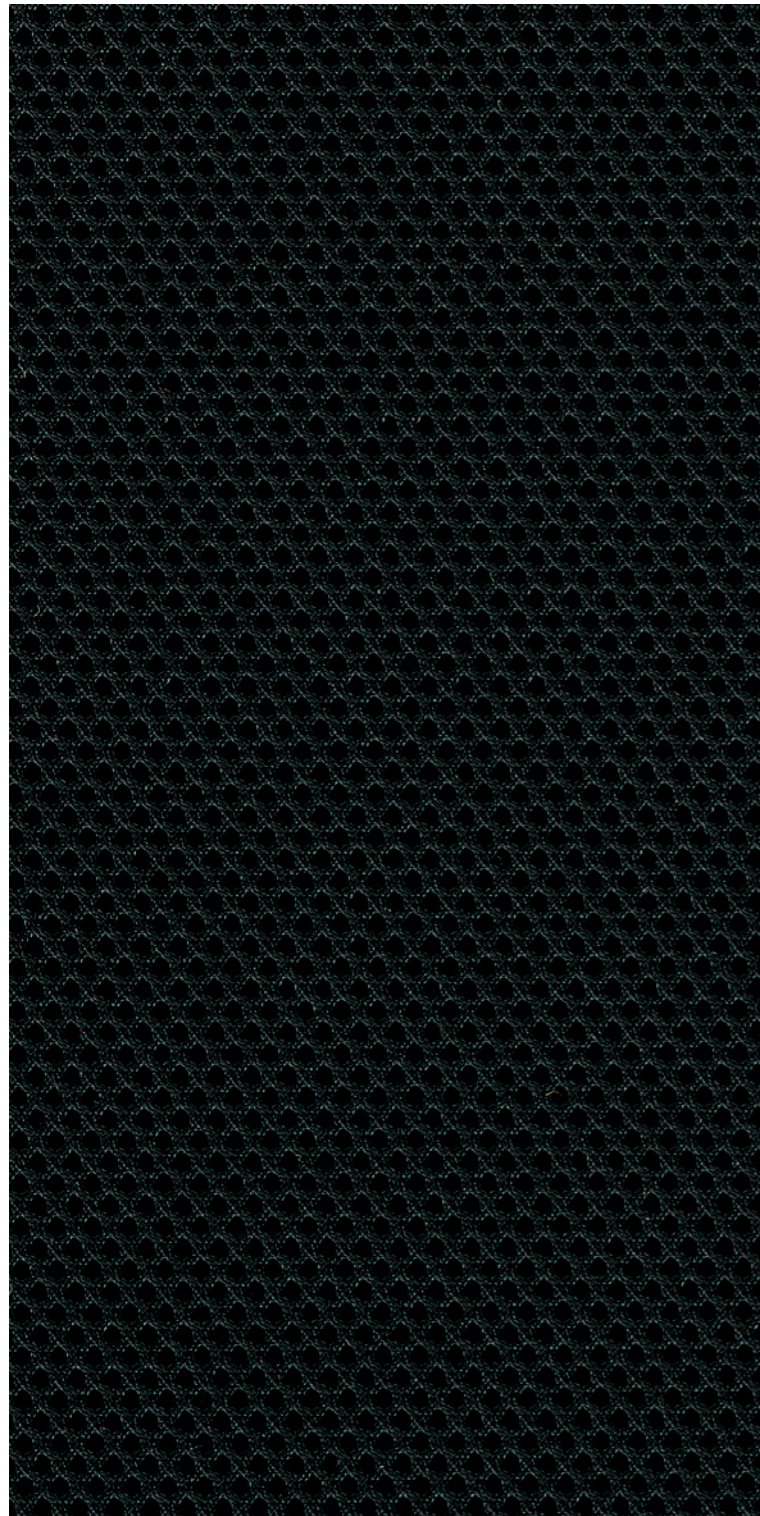
**Stoffe** Sitzmöbel

**Fabrics** Seating

**Tissus** Sièges

**Stoffen** Zitmeubilair





**Runner, Gabriel**  
**100 % Polyester**

Breite 160 cm, Längengewicht ca. 510 g/lf. M.  
 Scheuerfestigkeit über 70.000 Scheuertouren  
 nach Martindale  
 Brandverhalten getestet nach DIN EN 1021,  
 Teil 1 und 2  
 Schadstofffrei nach Öko-Tex Standard 100  
 100 % Schwermetallfrei

**Runner, Gabriel**  
**100 % polyester**

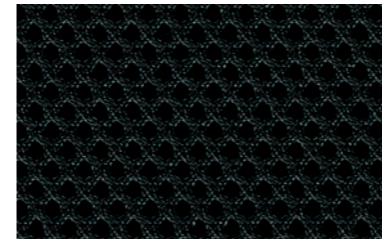
160 cm wide, approx. weight 510 g/lm  
 Wear resistance tested to over 70.000 rub cycles  
 on the Martindale test  
 Flammability tested to DIN EN 1021, parts 1 and 2  
 Free of harmful substances in acc. with Oeko-Tex  
 Standard 100  
 100 % free of heavy metals

**Runner, Gabriel**  
**100 % polyester**

Largeur : 160 cm, poids au mètre : environ 510 g/ml  
 Résistance à l'usure :  
 plus de 70.000 tours Martindale  
 Comportement au feu testé selon la norme  
 DIN EN 1021, parties 1 et 2.  
 Exempt de substances toxiques selon le label  
 « Öko-Tex Standard 100 ».  
 100 % exempt de métaux lourds

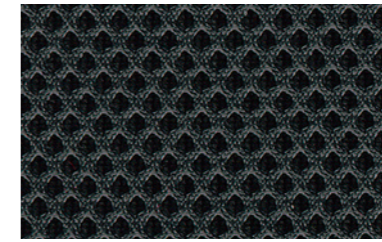
**Runner, Gabriel**  
**100 % polyester**

Breedte 160 cm, gewicht per  
 strekkende meter ca. 510 g  
 Slijtvastheid 70.000 toeren Martindale  
 Brandgedrag getest volgens DIN EN 1021,  
 deel 1 en 2  
 Vrij van schadelijke stoffen conform  
 Eco-Tex standaard 100  
 100 % vrij van zware metalen



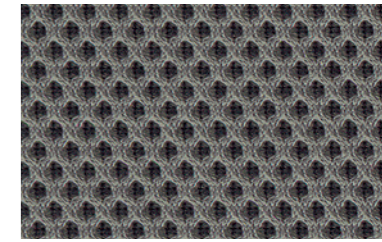
62

schwarz / black / noir / zwart



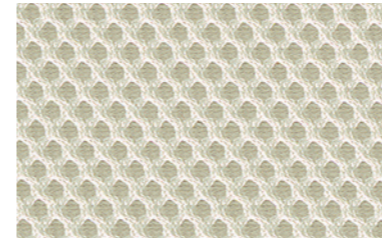
91

anthrazit / anthracite / anthracite /  
 antraciet



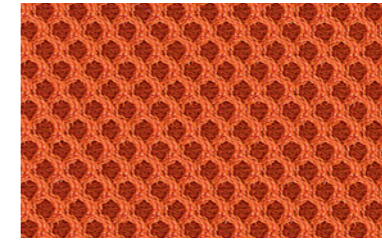
53

grau / grey / gris / grijs



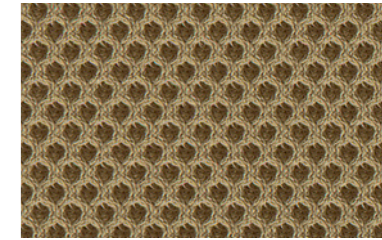
64

weiß / white / blanc / wit



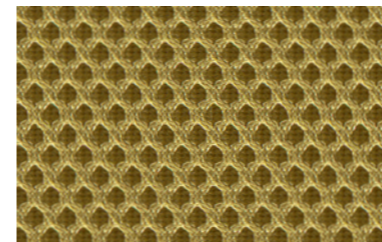
82

orange / orange / orange / oranje



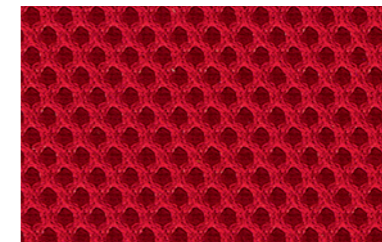
25

beige / beige / beige / beige



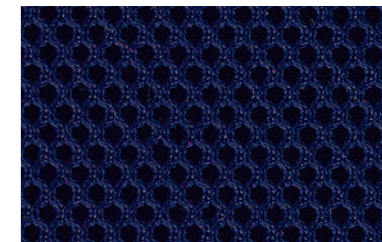
70

ocker / ochre / ocre / oker



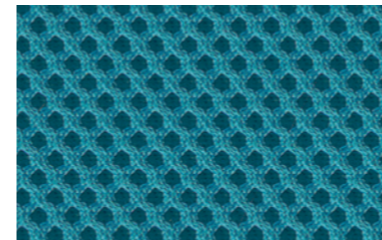
61

rot / red / rouge / rood



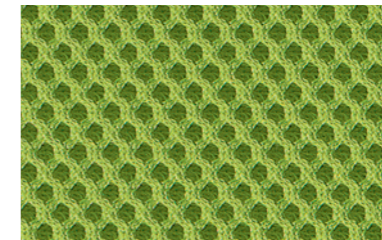
42

dunkelblau / dark blue / bleu foncé /  
 donkerblauw



43

hellblau / light blue / bleu clair /  
 lichtblauw



34

apfelgrün / apple green /  
 vert pomme / appelgroen

**Deutschland**

König + Neurath AG  
Büromöbel-Systeme  
Industriestraße 1-3  
61184 Karben  
Tel.: +49 (0)6039 483-0  
e-mail: [info@koenig-neurath.de](mailto:info@koenig-neurath.de)  
[www.koenig-neurath.de](http://www.koenig-neurath.de)

**Great Britain**

K + N International  
(Office Systems) Ltd  
52 Britton Street  
London EC1M 5UQ  
Tel.: +44 (0)20 74909340  
e-mail: [info@koenig-neurath.co.uk](mailto:info@koenig-neurath.co.uk)  
[www.koenig-neurath.co.uk](http://www.koenig-neurath.co.uk)

**Nederland**

König + Neurath Nederland  
Office Furniture  
Beethovenstraat 530  
1082 PR Amsterdam  
Tel.: +31 (0)20 4109410  
e-mail: [info@konig-neurath.nl](mailto:info@konig-neurath.nl)  
[www.konig-neurath.nl](http://www.konig-neurath.nl)

**France**

König + Neurath AG  
Showroom Paris  
66, rue de la Victoire  
75009 Paris  
Tel.: +33 (0)1 44 63 23 93  
e-mail: [info@koenig-neurath.fr](mailto:info@koenig-neurath.fr)  
[www.koenig-neurath.fr](http://www.koenig-neurath.fr)

**Schweiz**

König + Neurath (Schweiz) GmbH  
Büromöbel-Systeme  
St. Gallerstrasse 106 d  
CH-9032 Engelburg / St. Gallen  
Tel.: +41 (0)52 770 22 42  
e-mail: [info@koenig-neurath.de](mailto:info@koenig-neurath.de)  
[www.koenig-neurath.de](http://www.koenig-neurath.de)

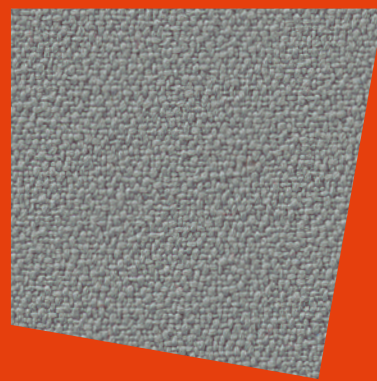
# ECONOMY 20

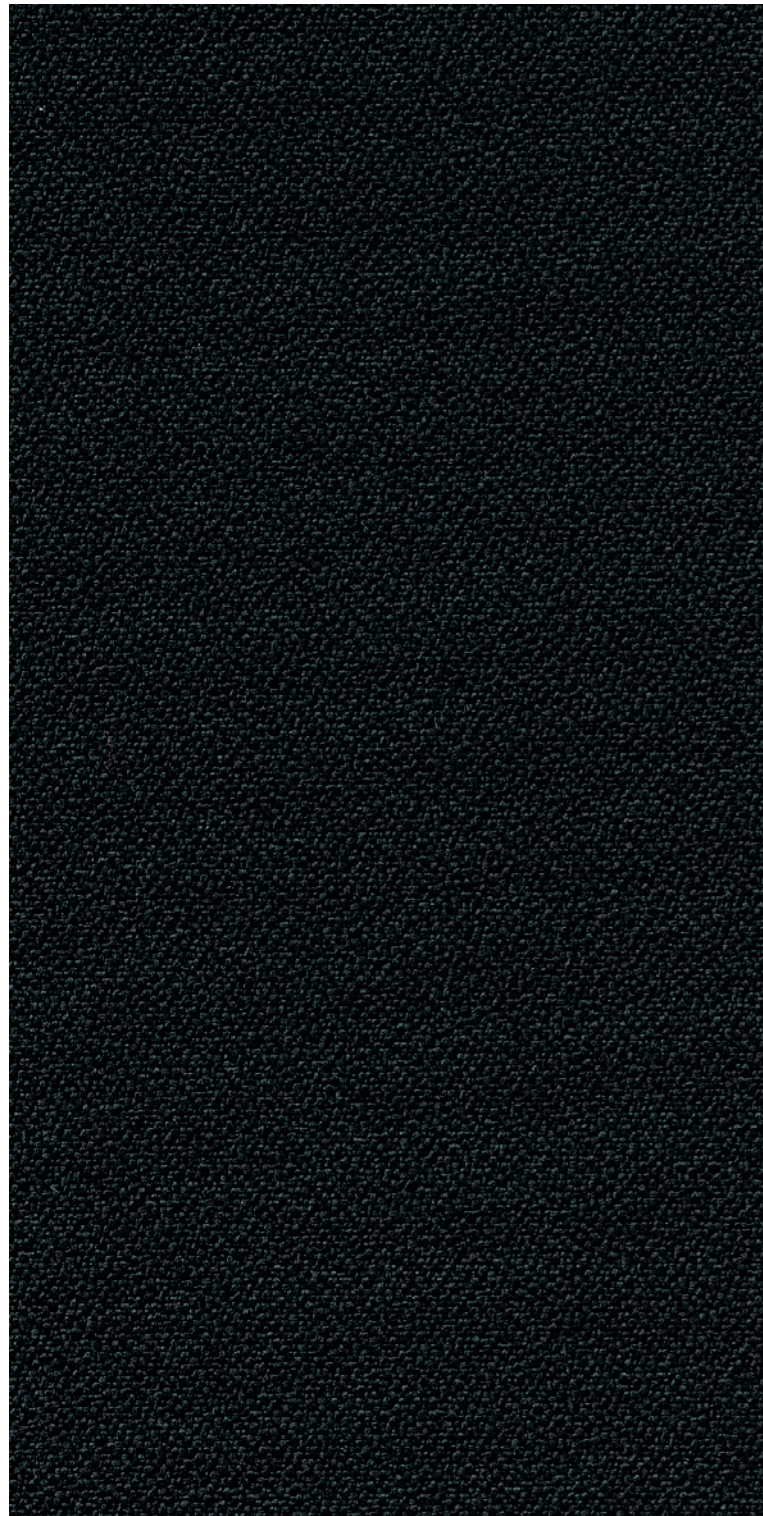
**Stoffe** Sitzmöbel und  
modulare Loungesysteme

**Fabrics** Seating and  
modular lounge systems

**Tissus** Sièges et  
systèmes lounge modulaires

**Stoffen** Zitmeubilair en  
modulaire loungesystemen



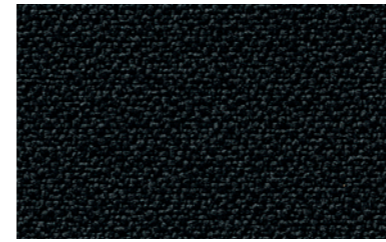


**Xtreme, Camira**  
**100 % recyceltes Polyester**  
 Breite 140 cm, Längengewicht ca. 310 g/qm.  
 Scheuerfestigkeit über 100.000 Scheuertouren  
 nach Martindale  
 Schwer entflammbar nach DIN 4102 B1  
 EU Ecolabel  
 Schadstofffrei nach Öko-TEX  
**Zur Kombination mit Raumgliederungs-  
 elementen empfehlen wir die Stoffgruppe 81.**

**Xtreme, Camira**  
**100 % recycled polyester**  
 140 cm wide, approx. weight 310 g/qm  
 Wear resistance tested to over 100.000 rub  
 cycles on the Martindale test  
 Low flammability, class DIN 4102 B1  
 EU Ecolabel  
 Free of harmful substances in acc. with Oeko-Tex  
**For combination with screens, we recommend  
 the use of fabric group 81.**

**Xtreme, Camira**  
**100 % polyester recyclé**  
 Largeur 140 cm, poids au mètre linéaire env. 310 g  
 Résistance à l'usure : plus de 100.000 tours  
 Martindale  
 Difficilement inflammable selon DIN 4102 B1  
 écolabel UE  
 Exempt de substances toxiques selon  
 le label « Öko-TEX »  
**Nous recommandons le groupe de tissus 81  
 pour combiner avec les cloisons modulaires.**

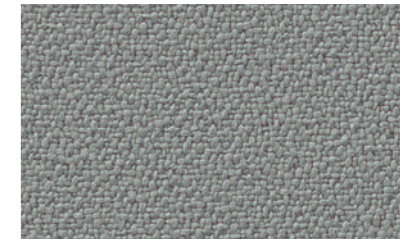
**Xtreme, Camira**  
**100 % gerecycled polyester**  
 140 cm breed, gewicht ca. 310 per  
 strekkende meter  
 Slijtvastheid 100.000 toeren Martindale  
 Moeilijk ontvlambaar,  
 volgens DIN 4102 B1-voorschriften  
 voldoet aan het Europees ecolabel  
 Vrij van schadelijke stoffen conform Eco-TEX  
**Voor de combinatie met scheidingswanden  
 raden wij stofgroep 81 aan.**



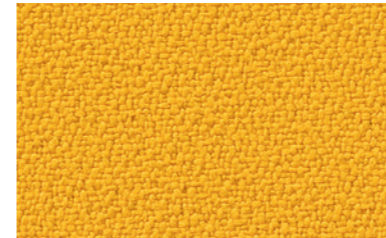
**62**  
 schwarz / black / noir / zwart



**91**  
 anthrazit / anthracite / anthracite /  
 antraciet



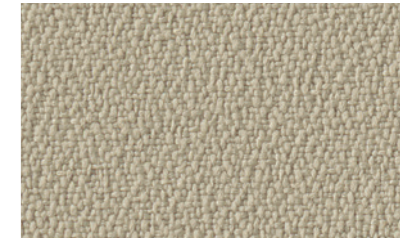
**53**  
 grau / grey / gris / grijs



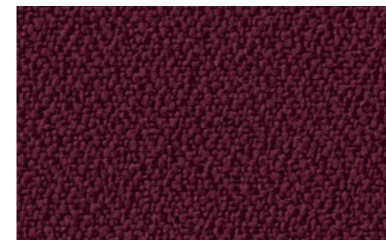
**71**  
 gelb / yellow / jaune / geel



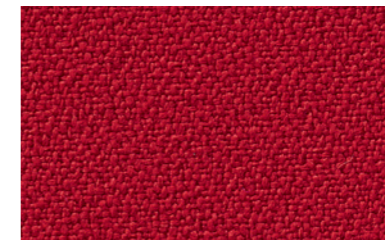
**70**  
 ocker / ochre / ocre / oker



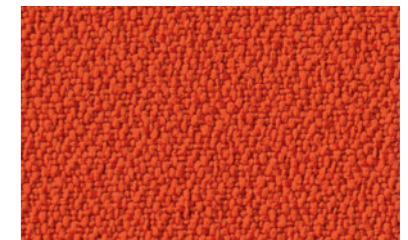
**25**  
 beige / beige / beige / beige



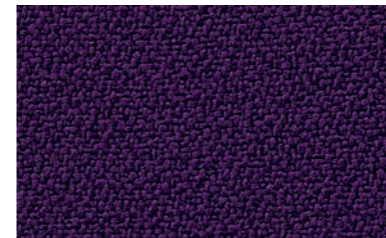
**66**  
 kirschrot / cherry red /  
 rouge cerise / kersenrood



**61**  
 dunkelrot / dark red /  
 rouge foncé / donkerrood



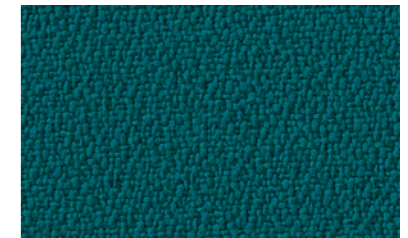
**82**  
 orange / orange / orange / oranje



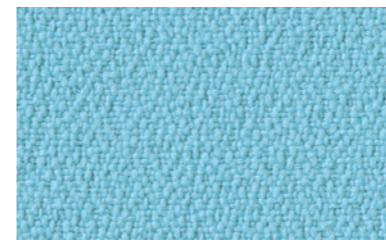
**68**  
 pflaume / plum / prune / pruim



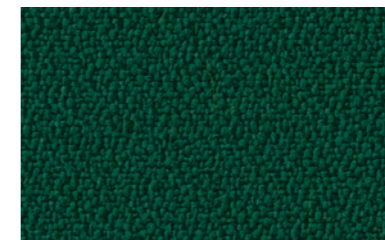
**41**  
 mittelblau / medium blue /  
 bleu moyen / middelblauw



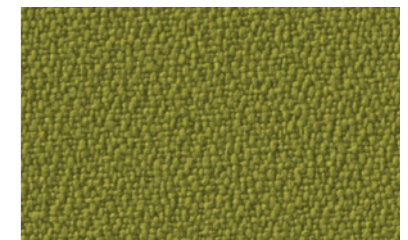
**46**  
 türkisblau / turquoise blue /  
 bleu turquoise / turkooisblauw



**48**  
 wasserblau / water blue /  
 bleu aquatique / waterblauw



**33**  
 dunkelgrün / dark green /  
 vert foncé / donkergroen



**35**  
 olivgrün / olive green /  
 vert olive / olijfgroen

Die individuelle Zuordnung zu den verschiedenen Programmen/Elementen ist in den Preisunterlagen definiert. Mögliche Farbabweichungen vom Original sind drucktechnisch bedingt.

The individual assignment to the various programmes/elements is defined in the price lists. Possible colour deviations from the original are due to printing.

L'appartenance individuelle aux différents programmes/éléments est définie dans la documentation sur les prix. Pour des raisons de technique d'impression, les couleurs peuvent varier par rapport aux originaux.

De individuele bepaling voor de verschillende pro-gramma's/elementen is in de prijsbijlagen omschreven. Eventuele kleurafwijkingen met het origineel zijn vanwege drucktechnisch redenen niet te vermijden.



**Deutschland**

König + Neurath AG  
Büromöbel-Systeme  
Industriestraße 1-3  
61184 Karben  
Tel.: +49 (0)6039 483-0  
e-mail: [info@koenig-neurath.de](mailto:info@koenig-neurath.de)  
[www.koenig-neurath.de](http://www.koenig-neurath.de)

**Great Britain**

K + N International  
(Office Systems) Ltd  
52 Britton Street  
London EC1M 5UQ  
Tel.: +44 (0)20 74909340  
e-mail: [info@koenig-neurath.co.uk](mailto:info@koenig-neurath.co.uk)  
[www.koenig-neurath.co.uk](http://www.koenig-neurath.co.uk)

**Nederland**

König + Neurath Nederland  
Office Furniture  
Beethovenstraat 530  
1082 PR Amsterdam  
Tel.: +31 (0)20 4109410  
e-mail: [info@konig-neurath.nl](mailto:info@konig-neurath.nl)  
[www.konig-neurath.nl](http://www.konig-neurath.nl)

**France**

König + Neurath AG  
Showroom Paris  
66, rue de la Victoire  
75009 Paris  
Tel.: +33 (0)1 44 63 23 93  
e-mail: [info@koenig-neurath.fr](mailto:info@koenig-neurath.fr)  
[www.koenig-neurath.fr](http://www.koenig-neurath.fr)

**Schweiz**

König + Neurath (Schweiz) GmbH  
Büromöbel-Systeme  
St. Gallerstrasse 106 d  
CH-9032 Engelburg / St. Gallen  
Tel.: +41 (0)52 770 22 42  
e-mail: [info@koenig-neurath.de](mailto:info@koenig-neurath.de)  
[www.koenig-neurath.de](http://www.koenig-neurath.de)

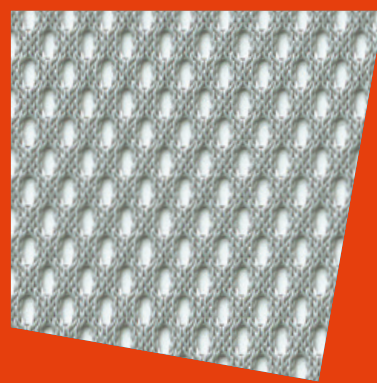
# NETZ

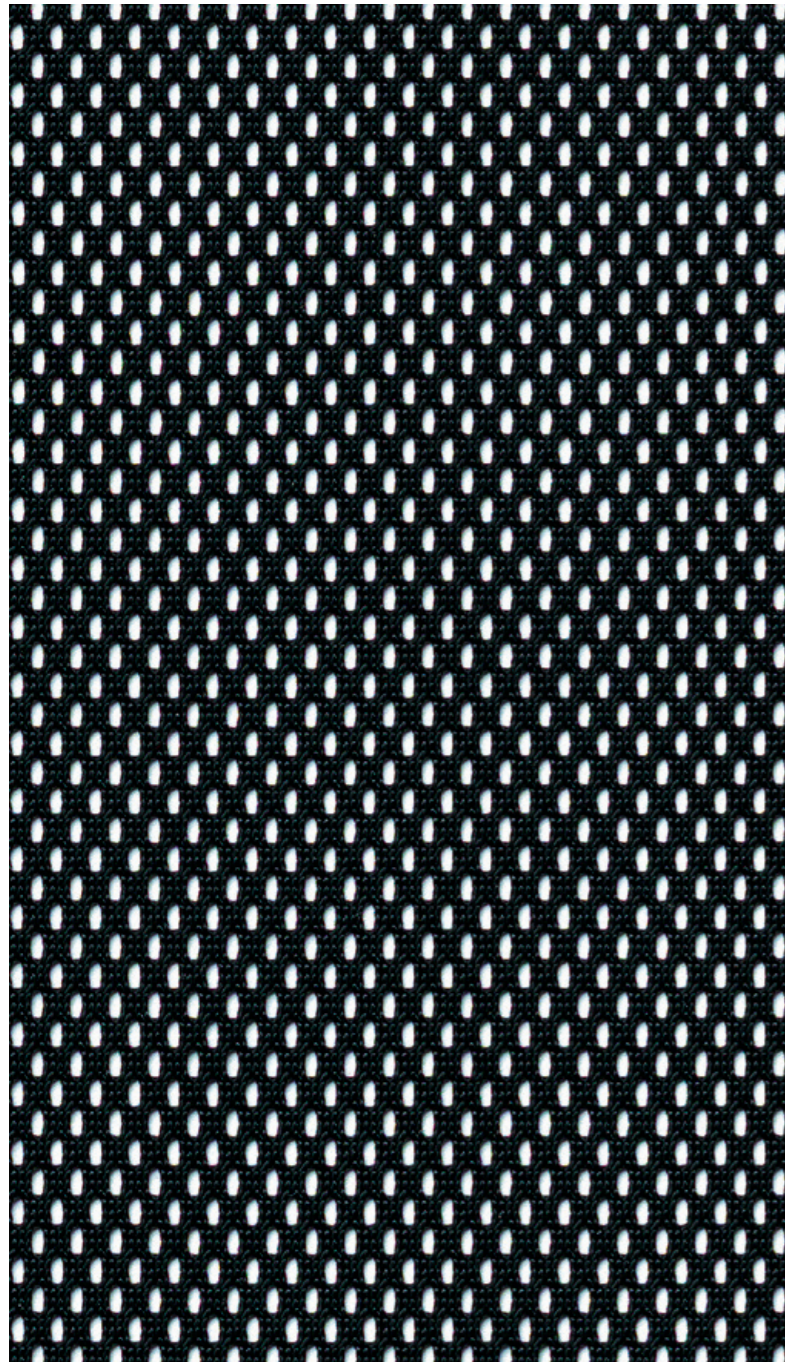
**Stoffe** Sitzmöbel

**Fabrics** Seating

**Tissus** Sièges

**Stoffen** Stoelen



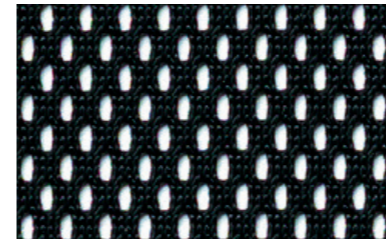


**Polo, Fidivi**  
**100 % Polyester**  
Breite 150 cm, Längengewicht ca. 540 g/lf. M.  
Scheuerfestigkeit über 100.000 Scheuertouren  
nach Martindale  
Brandverhalten getestet nach DIN EN 1021, Teil 1

**Polo, Fidivi**  
**100 % polyester**  
150 cm wide, approx. weight 540 g/lm  
Wear resistance tested to over 100.000 rub cycles  
on the Martindale test  
Flammability tested to DIN EN 1021, part 1

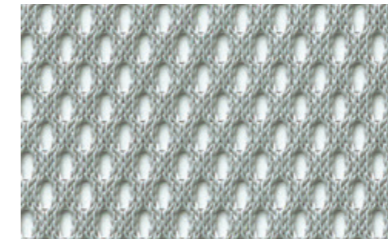
**Polo, Fidivi**  
**100 % polyester**  
Largeur : 150 cm, poids au mètre :  
environ 540 g/ml  
Résistance à l'usure : plus de 100.000 tours  
Martindale  
Comportement au feu testé selon la norme  
DIN EN 1021, partie 1

**Polo, Fidivi**  
**100 % polyester**  
Breedte 150 cm, gewicht per  
strekende meter ca. 540 g  
Slijtvastheid 100.000 toeren Martindale  
Brandgedrag getest volgens DIN EN 1021, deel 1



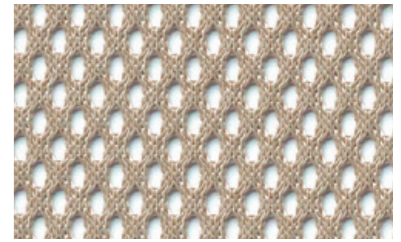
**N1S**

schwarz / black / noir / zwart



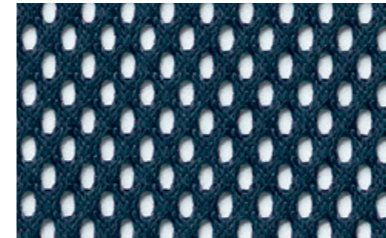
**N1G**

hellgrau / light grey / gris clair /  
lichtgrijs



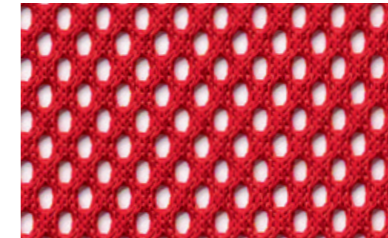
**N1E**

beige / beige / beige / beige



**N1U**

blau / blue / bleu / blauw



**N10**

rot / red / rouge / rood



**N1W**

weiß / white / blanc / wit

Die individuelle Zuordnung zu den verschiedenen Programmen/Elementen ist in den Preisunterlagen definiert. Mögliche Farbabweichungen vom Original sind drucktechnisch bedingt.

The individual assignment to the various programmes/elements is defined in the price lists. Possible colour deviations from the original are due to printing.

L'appartenance individuelle aux différents programmes/éléments est définie dans la documentation sur les prix. Pour des raisons de technique d'impression, les couleurs peuvent varier par rapport aux originaux.

De individuele bepaling voor de verschillende pro-gramma's/elementen is in de prijsbijlagen omschreven. Eventuele kleurafwijkingen met het origineel zijn vanwege druktechnisch redenen niet te vermijden.