



Axia 2.5 Netweave

Axia 2.5 Netweave

BMA Axia 2.5 is voorzien van een netweave rug met bekkensteun. De netweave stof is verkrijgbaar in zes verschillende kleuren, geïnspireerd op diepe bossen, weidse velden, bloemen en steen. Het gebruik van kleuren die in de leefomgeving voorkomen creëert een moderne en luxueuze designuitstraling in combinatie met stofferingsopties uit onze Standaard, Extended of Curated stoffencollecties.

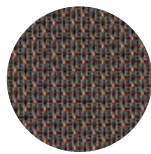


Eigenschappen & voordelen

BMA Axia 2.5 netweave kleuren:



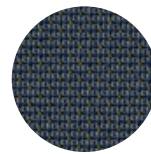
JOIN 32



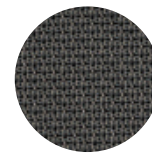
JOIN 14



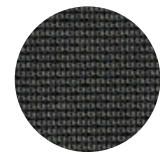
JOIN 70



JOIN 75



JOIN 11



JOIN 10

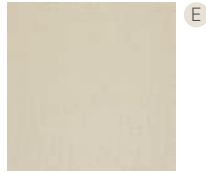
*De kleuren kunnen er anders uitzien op uw scherm



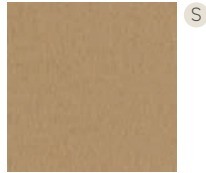




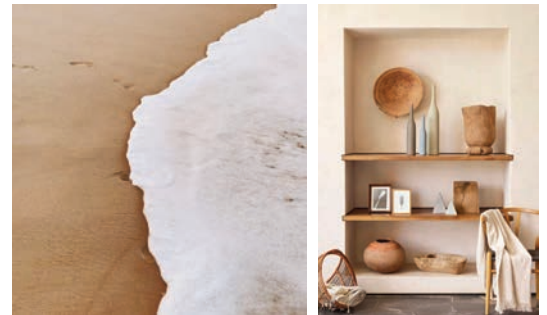
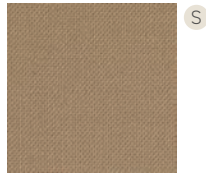
Steelcut 3_STT240



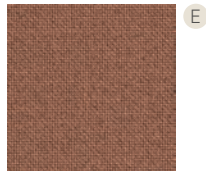
Focus_FC61039



Select_SC61184



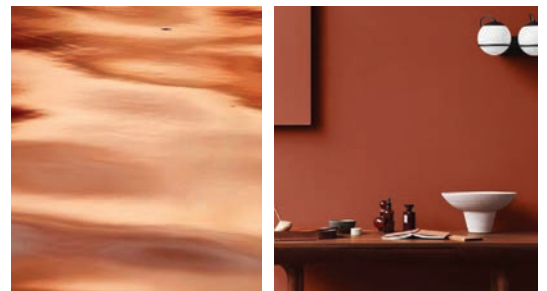
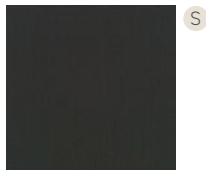
Cura_CU61257



Focus_FC61036

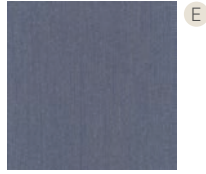


Steelcut trio 3_STT383

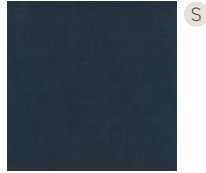




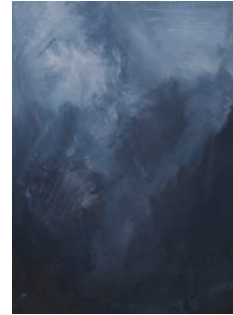
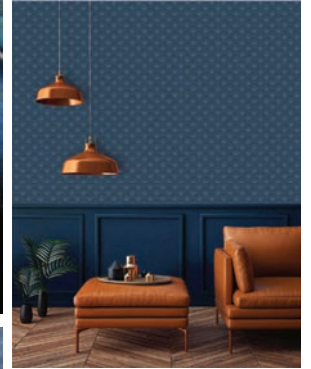
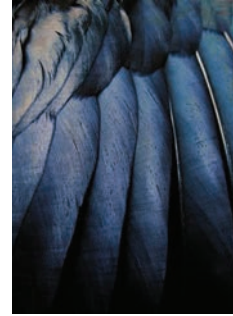
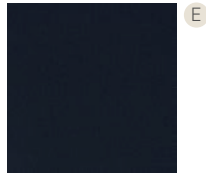
Steelcut trio 3_STT716



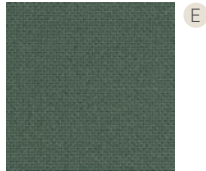
Steelcut trio 3_STT796



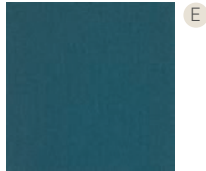
Steelcut 3_STT775



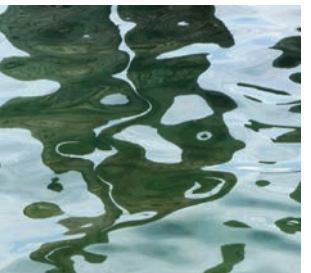
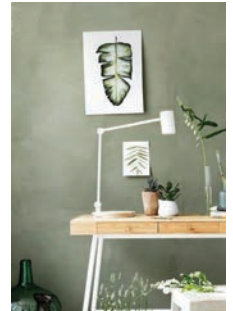
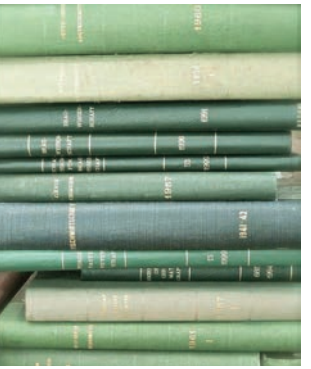
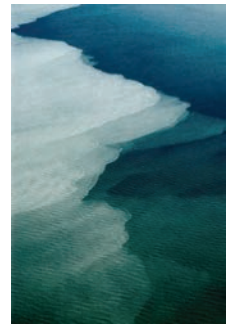
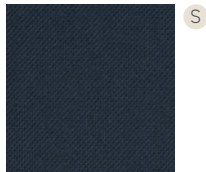
Cura_CU68182



Steelcut 3_STT780

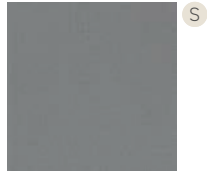


Select_SC66194

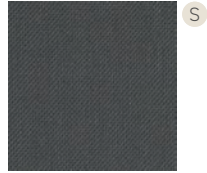




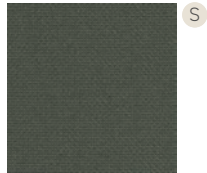
Steelcut 3_STT155



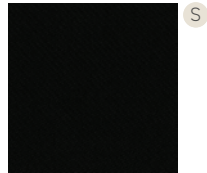
Select_SC60003



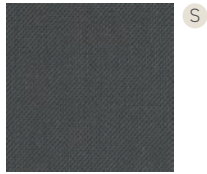
Cura_CU60109



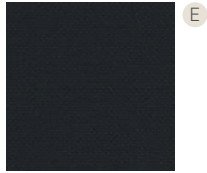
Oceanic_OCI001



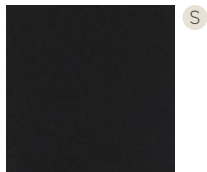
Select_SC60003



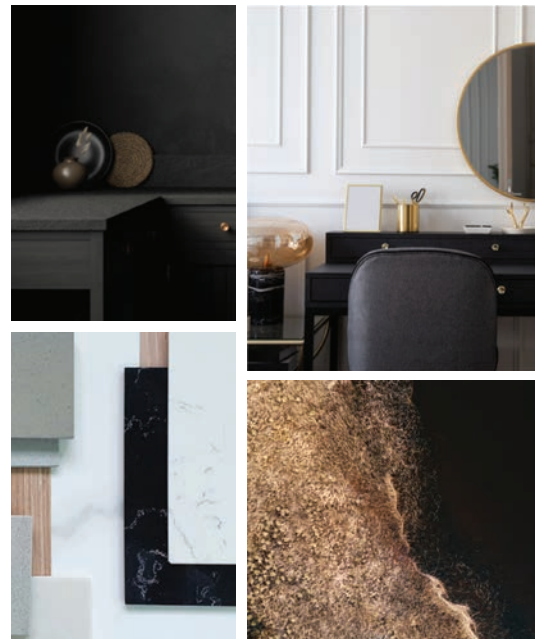
Cura_60111



Steelcut 3_STT190



Oceanic_OCI001



S = Standaard stof- en kleurcollectie

E = Extended collectie stoffen en kleuren