

/ Bralco ubi



Info@meinema.nl
0031 - 20 311 8396

design:
Gianantonio Perin
Giorgio Topan







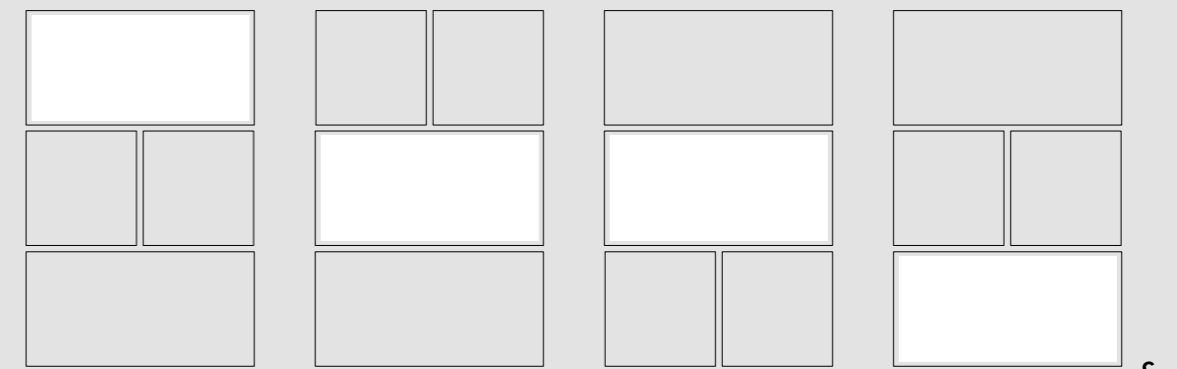
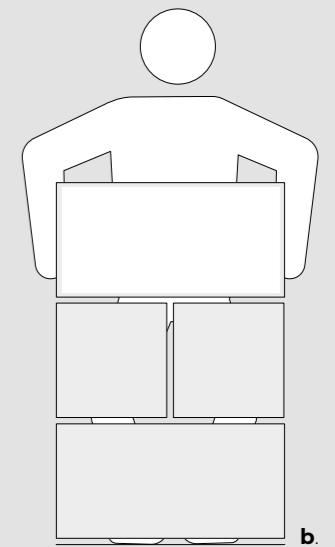
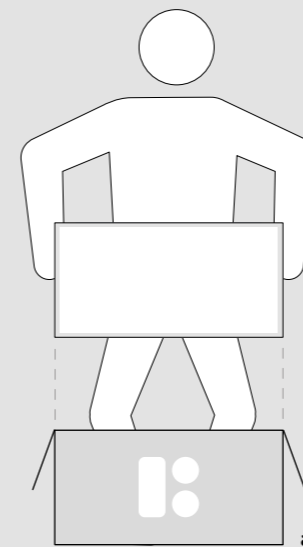






Moduli premontati dinamici

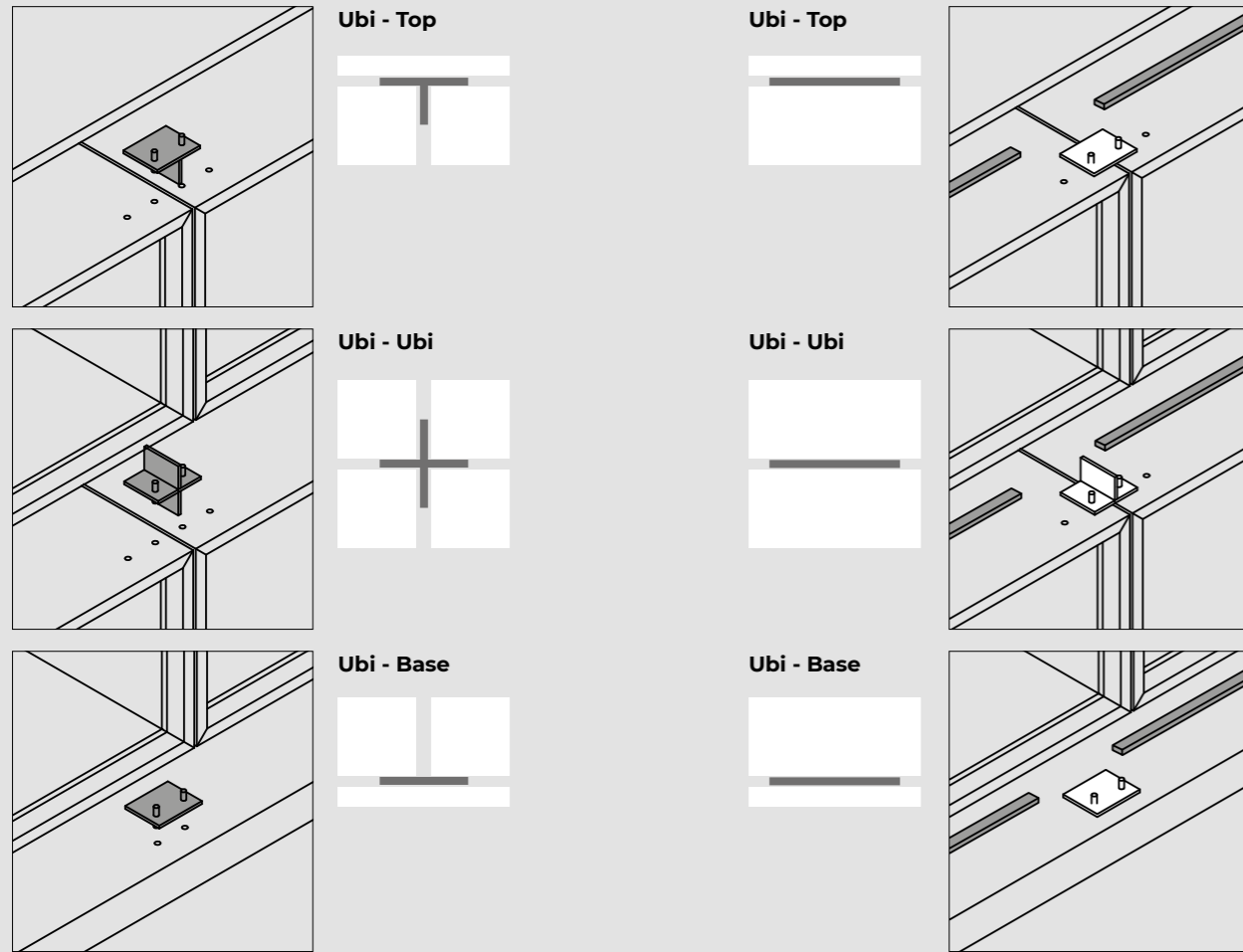
Dynamic pre-assembled modules
 Modules dynamiques pré-assemblés
 Dynamische vormontierte Module
 Módulos dinámicos premontados



a. mobili consegnati montati
 Delivered assembled
 Meuble livré monté
 Modulen werden montiert geliefert
 Muebles entregados embalados

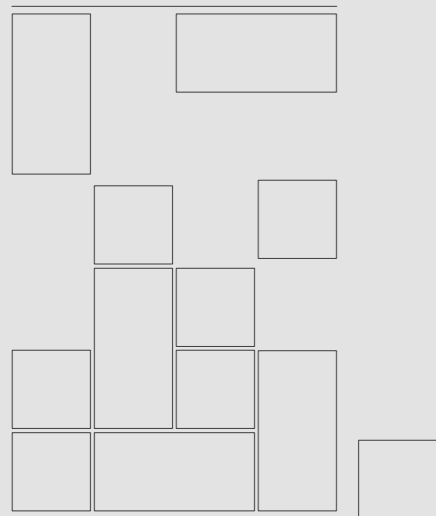
b. assemblaggio senza utilizzo di ferramenta
 assembly without tools
 assemblage sans quincaillerie
 eisenware-frei Montage
 montaje sin opción de herraje

c. variabilità futura della composizione
 future variability of the composition
 variabilité future de la composition
 Kompositionen lassen sich nachträglich verändern
 variabilidad futura de la composición



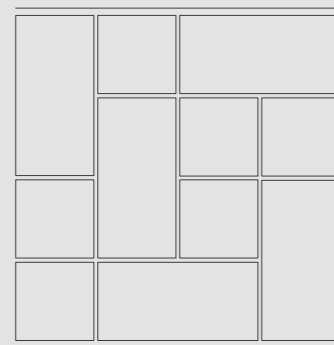
composizione modificabile a giunzione rapida

Quick-join editable composition
Composition modifiable à montage rapide
Leicht änderbar durch schnell Verbindung
Composiciones variables de unión rápida

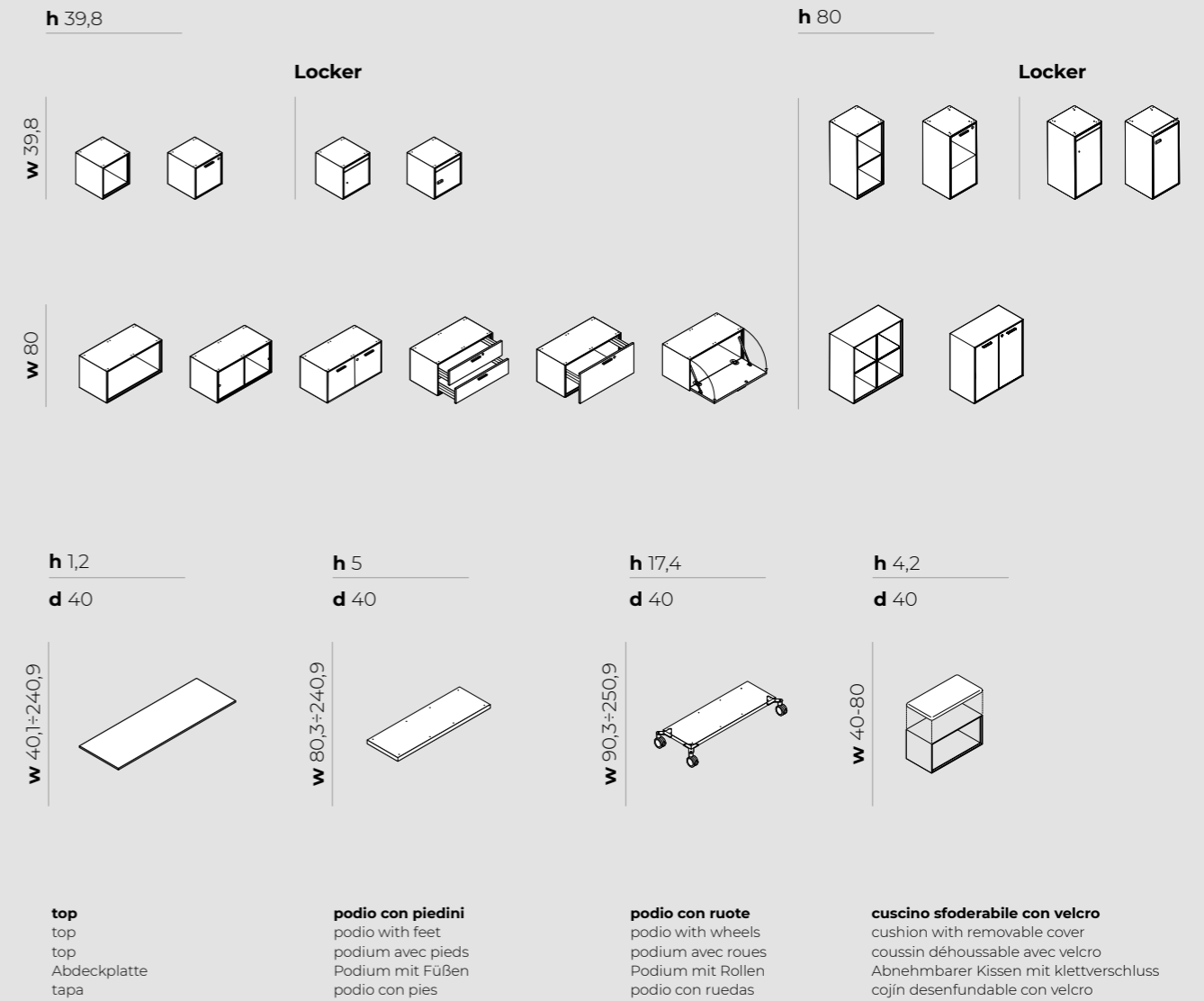


coppia barre di fissaggio, antiriflessione ed oscuramento

pair of fixing, non flexion and darkening rails
paire de barres d'assemblage, anti-flexion et pour obscurcissement
Paar befestigungstraverse, versteifungs- und Verdunklungstraversen
par de barras de ajuste, anti flexión y oscurecimiento



measure in cm • measurements in cm • mesures en cm • Maße in cm • medidas en cm



top
top
top
Abdeckplatte
tapa

podio con piedini
podio with feet
podium avec pieds
Podium mit Füßen
podio con pies

podio con ruote
podio with wheels
podium avec roues
Podium mit Rollen
podio con ruedas

cuscino sfoderabile con velcro
cushion with removable cover
cousin déhoussable avec velcro
Abnehmbarer Kissen mit klettverschluss
cojín desenfundable con velcro

h 99,5
d 40



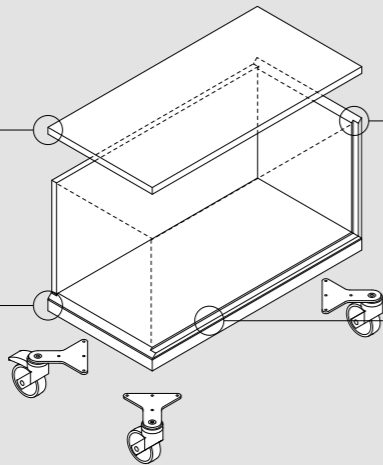
h 139,6
d 40



maniglie p. 120 • handles p. 120 • poignées p. 120 • Griffe p. 120 • tirador p. 120



top
top
top
Abdeckplatte
tapa



45° folding
45° folding
liaison à 45°
45° gehrung
conexión 45°

podio h 5
podio h 5
podium h 5
Podium h 5
podio h 5

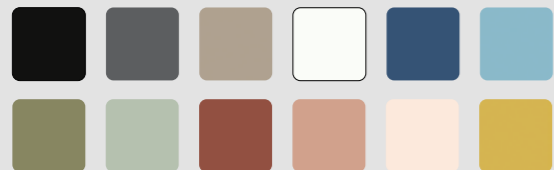
sistema step forming®
step forming® system
système step forming®
Step-Forming® System
sistema step forming®

podio, podio, podium, Podium, podio

melaminico, melamine, mélamine, melamin, melamina



laccato opaco, lacquered matt, lacqué mat, matt lackiert, lacado mate



step forming®
step forming®
step forming®
Step-Forming®
step forming®

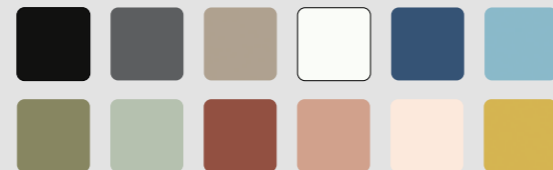


top e Ubi, top and Ubi, top et Ubi, Abdeckung und UBI, tapa y Ubi

melaminico, melamine, mélamine, melamin, melamina



laccato opaco, lacquered matt, lacqué mat, matt lackiert, lacado mate



45° folding
45° folding
liaison à 45°
45° gehrung
conexión 45°

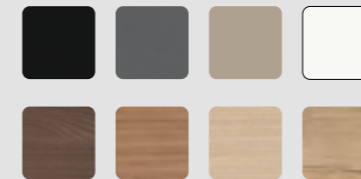


measure in cm • measurements in cm • mesures en cm • Maße in cm • medidas en cm

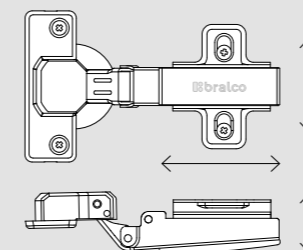
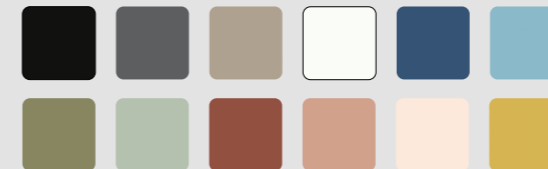
/ ubi



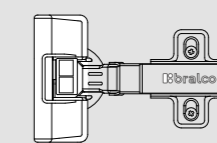
melaminico, melamine, mélamine, melamin, melamina



laccato opaco, lacquered matt, lacqué mat, matt lackiert, lacado mate



cerniera regolabile montata
levelling hinge
charnière réglable montée
Vormontiert einstellbarem Scharnier
bisagra regulable montada



105° - kit slow-motion

Standard - Locker



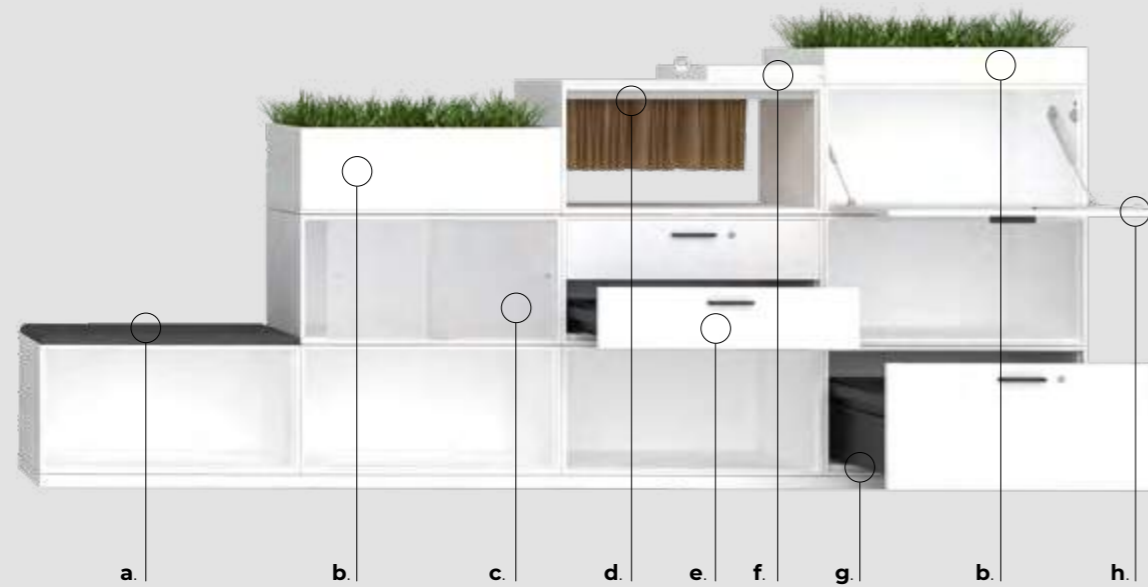
Free code - Locker



Fix code - Locker



maniglie p. 120 • handles p. 120 • poignées p. 120 • Griffe p. 120 • tirador p. 120



a. cuscino h 4,2
pillow h 4,2
cousin h 4,2
Kisse h 4,2
cojín h 4,2

e. cassetto
drawer
tiroir
Schublade
cajón

b. porta piante h 24/ h 10
flower box h 24/ h 10
boîte à fleurs h 24/ h 10
Vasen-halter h 24/ h 10
caja para plantas h 24/ h 10 (macetero)

f. vassoio porta oggetti
metal tray
plateau de stockage
Ablagefach
bandeja de almacenamiento

c. antine scorrevoli in metacrilato
methacrylate sliding doors
portes coulissantes en méthacrylate
Schiebetüren aus Methacrylat
puertas correderas de metacrilato

g. fondo per cassetto classificatore
filling drawer bottom
fond pour tiroir extractible
Bodenplatte für Hängeregister
fondo para cajón archivo

d. coppia barre porta cartelle
pair of hanging file bars
paire de barres porte dossiers
in Paar Hängeregisterträger
par de barras portacarpetas

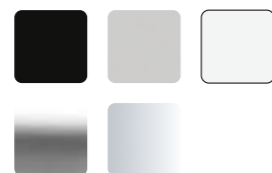
h. anta a ribalta / piano consultazione
folding door/briefing top
porte escamotable/plateau de consultation
Klapptür/Besprechungsplatte
puerta plegable/plano conversación

120
MANIGLIE
handles
poignées
Griffe
tiradores

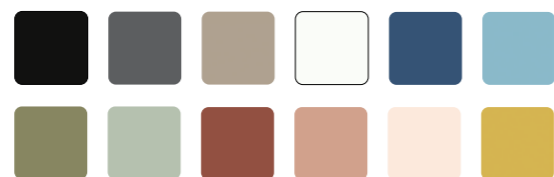
121
SISTEMI DI APERTURA
opening system
systèmes d'ouvertures
Eröffnungs-systeme
sistema de apertura



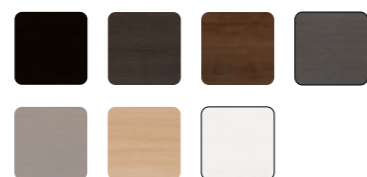
plastica
plastic
plastique
Plastik
plàstico



laccato opaco
matt lacquered
lacqué mat
matt lackiert
laqueado mate



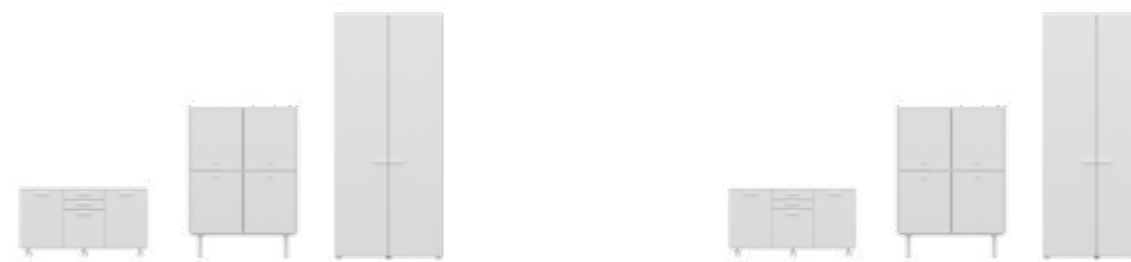
legno
wood
bois
Holzurnier
madera



metallo
metal
métal
metall
metal



metallo
metal
métal
metall
metal



office A

Ø



A

cifratura unica
unique encryption
chifrage unique
Gleichschliessende Zahlenschloss
cifrado unico

office B

Ø



B

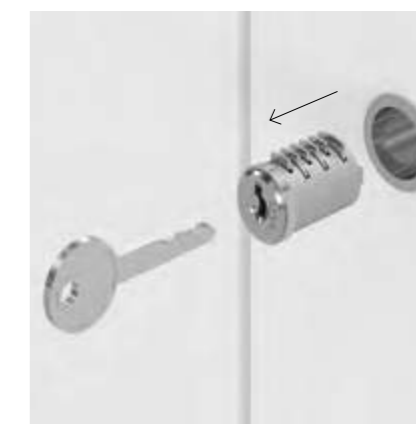
cifratura unica
unique encryption
chifrage unique
Gleichschliessende Zahlenschloss
cifrado unico



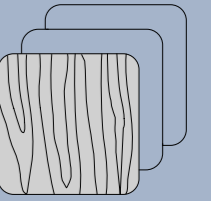
chiave passepartout
master key
la clef passepartout
Hauptschlüssel
llave maestra



codice di identificazione chiave/serratura
key/lock identification code
code d'identification clé/serrure
Identifikationscodes Schlüssel/Schloss
codigo de identificacion llave/cerradura



chiave di servizio per estrazione nottolino
service key for pawl extraction
clé d'extraction pour barillet
Werkzeugschlüssel zum Zylinderabau
llave de servicio para extracción del bombin



FINITURE E COLORI
finishing and colors
finitions et couleurs
Farben und ausföhrungen
acabados y colores



legno • veneer • bois • Holz • madera



rovere laccato nero
black lacquered oak
chêne laqué noir
schwarz lackierter Eiche
roble lacado negro

rovere Carbon
Carbon oak
chêne Carbon
Eiche Carbon
roble Carbon

rovere tabacco
tobacco oak
chêne tabac
Eiche Tabak
roble tabaco

rovere grigio scuro
dark grey oak
chêne gris foncé
dunkelgraue Eiche
roble gris oscuro



rovere grigio
grey oak
chêne gris
Eiche grau
roble gris

rovere naturale
natural oak
chêne naturel
Natur Eiche
roble natural

rovere laccato bianco
white lacquered oak
chêne laqué blanc
weiß lackierter Eiche
roble lacado blanco

melaminico • melamine • mélamine • melamin • melamina

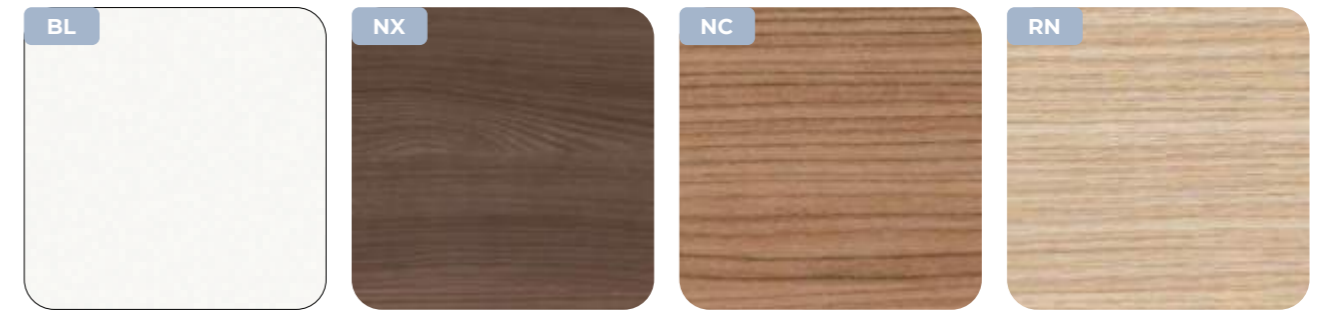


nero
black
noir
schwarz
negro

grigio titanio
titanium grey
gris titane
titangrau
gris titanio

grigio perla
pearl-grey
gris perle
perlgrau
gris perla

tortora
turtledove
tourterelle
taubengrau
törtola

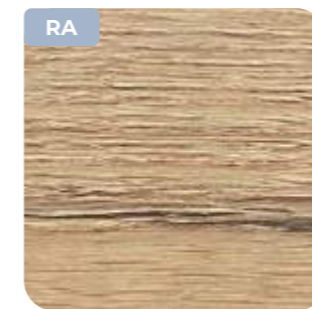


bianco
white
blanc
weiß
blanco

noce Lux
walnut Lux
noyer Lux
lux Nussbaum
nogal Lux

noce canaletto
canaletto walnut
noyer canaletto
Canaletto Nussbaum
nogal canaletto

rovere naturale
natural oak
chêne naturel
Natur Eiche
roble natural



rovere anticato
traditional oak
chêne vieilli
Eiche Antik
roble antiguo

RA
Superficie antibatterica
Antibacterial surface
Surface antibactérienne
Antibakterielle Oberfläche
Superficie antibacteriana



strutture metalliche • metal structures • structures métalliques • metallgestelle • estructuras metálicas



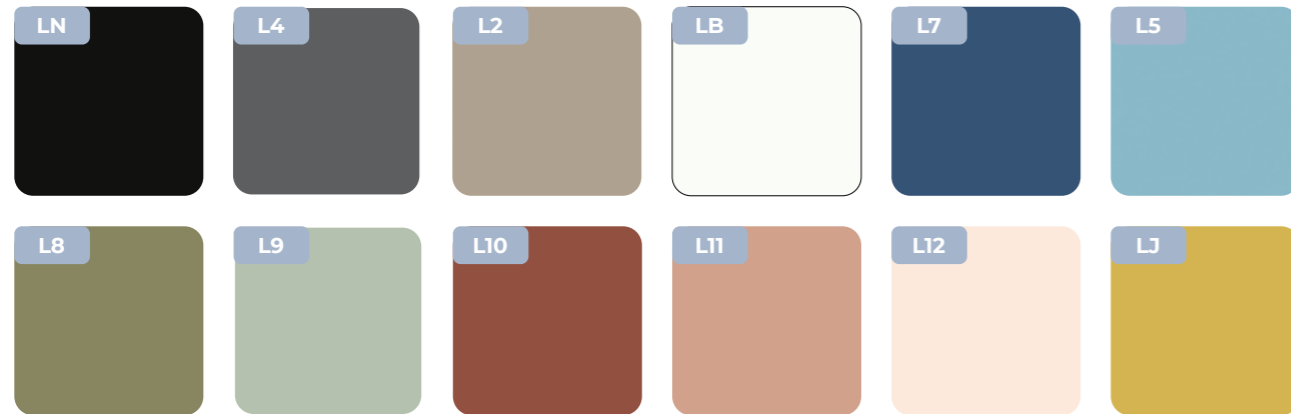
nero
black
noir
schwarz
negro

epox alluminio
silver epoxy
epoxy aluminium
Epoxidharz aluminium
epoxidico aluminio

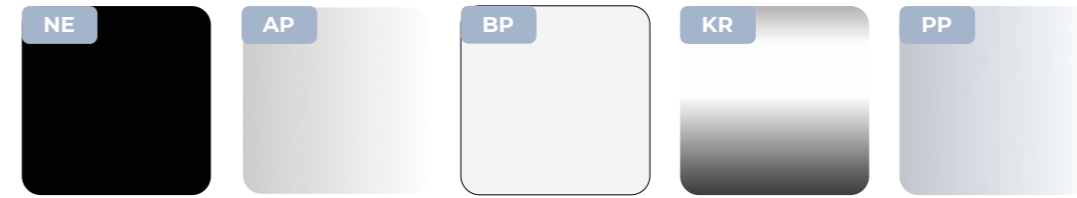
bianco
white
blanc
weiß
blanco

chromo lucido
glossy chrome
chromé brillant
Chrom poliert
cromo brillo

laccato opaco • lacquered matt • laqué mat • matt lackiert • lacado mate



plastica • plastic • plastique • Plastik • plàstico



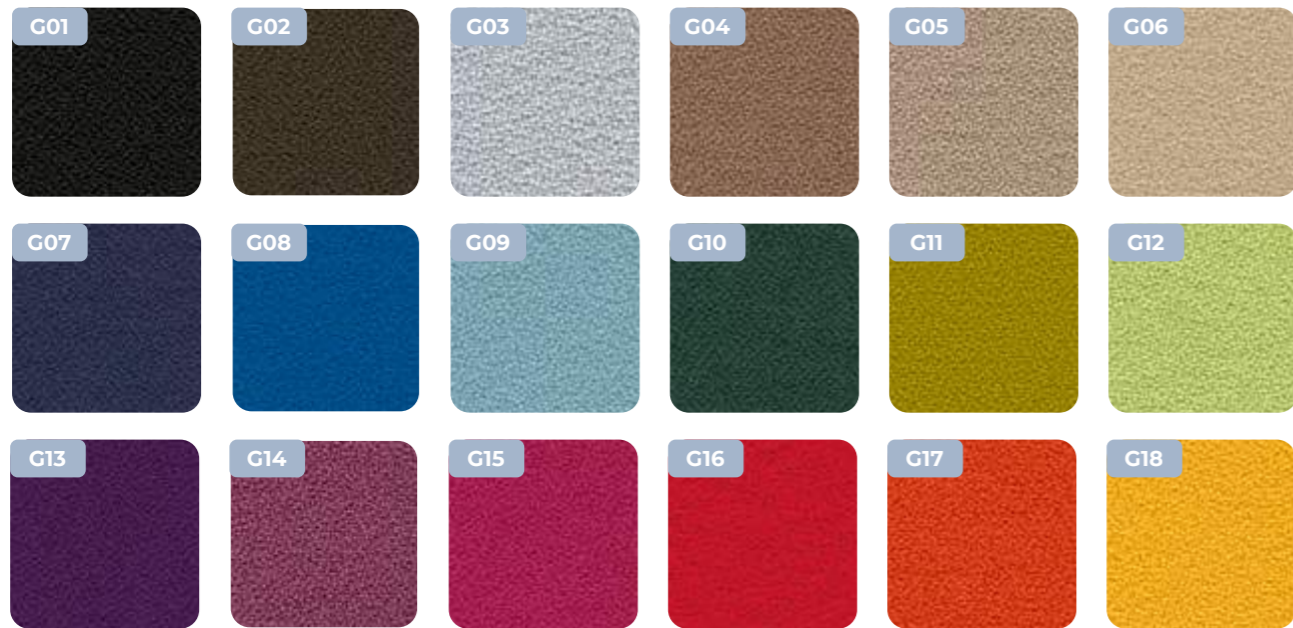
metacrilato • methacrylate • méthacrylate • Methacrylat • metacrilato



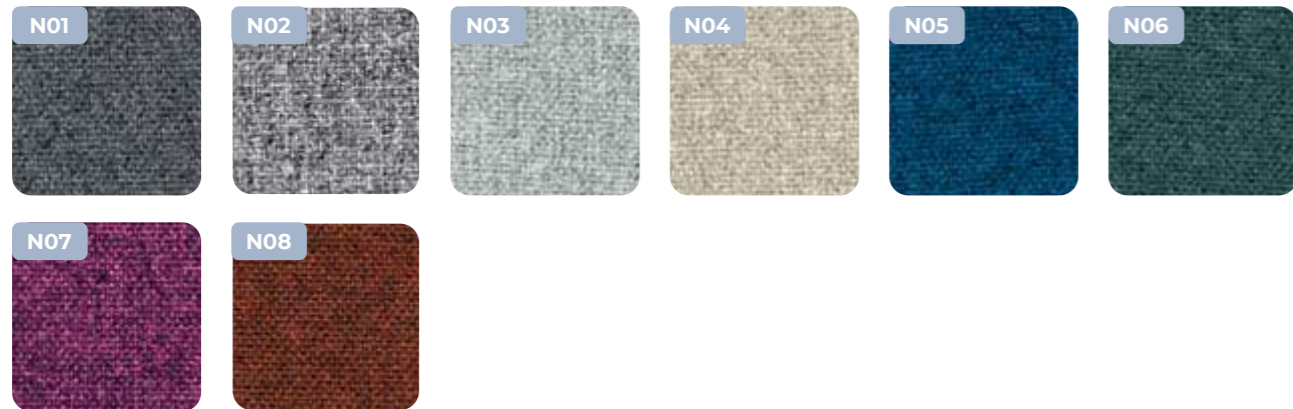


tessuto • fabric • tissu • stoff • tejido

MIRAGE



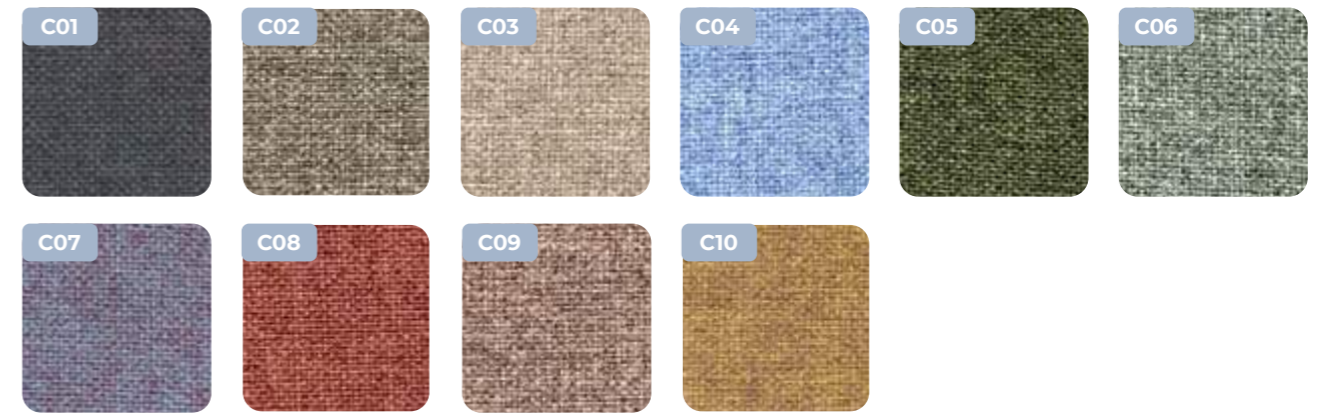
NEMI MELANGE



FENICE



CONVERT MEL 4000





Info@meinema.nl
0031 - 20 311 8396