



Finis hes

lapalma

INDOOR

Finishes

Lapalma srl si riserva il diritto di apportare modifiche tecniche e dimensionali e di introdurre miglioramenti che potrebbero cambiare l'estetica dei prodotti presentati in catalogo. I riferimenti colore stampati non sono vincolanti.

Lapalma srl reserves the right to alter the technical and dimensional specifications given in this publication and to introduce improvements that may change the aesthetics of the products shown in this catalogue. The printed colours hues are not binding.

Lapalma srl behält sich das Recht vor, jederzeit Veränderungen an den technischen Details und den Dimensionen der Produkte vorzunehmen und Verbesserungen einzuführen, die die Ästhetik der Produkte verändern können. Die Farbtöne der Abbildungen können von den tatsächlichen Farben der Produkte abweichen.

Lapalma srl se réserve le droit d'apporter des modifications techniques et de dimensions ainsi que d'introduire des améliorations qui peuvent changer l'esthétique des produits présentés. Les tonalités imprimées n'engagent pas la société.

Lapalma srl se reserva el derecho de cambiar tamaños y especificaciones técnicas de los productos listados en esta publicación, así como el de introducir mejoras que puedan cambiar la estética de los mismos. Por favor tengan en cuenta que los colores de los tejidos mostrados en fotografía no son totalmente fidedignos.

FABRIC

TESSUTO

We select fabrics that adorn the Lapalma collection by applying the criteria of softness, quality and resistance. With their yarns and textures, they offer Italian style that crosses boundaries, leading to emotions in all environments where they are included. To guarantee high performance, we select fabrics with abrasion resistance starting from >50,000 Martindale (many exceed even 100,000 cycles), fire-resistance and light resistance.

Fabric categories

The fabrics are classified according to separate categories of price bands. The range of materials used includes 100% polyester Trevira, mixed wool, technical yarns such as polyamide, as well as 100% virgin wool. The range also includes Iris fabric made of 100% recycled PET.

Customer fabric

Thanks to our tailoring skills, we can provide a customised service. We can upholster the products you choose with customer fabric. You just need to send us an A4 size sample so we can verify feasibility. If accepted, we will ask for a length of fabric in order to make a trial upholstered element. A surcharge will be made for patterned fabrics.



SOFT-LEATHER/LEATHER

PELLE/CUOIO

Soft - leather

Featuring softness and elasticity, all the leather chosen by Lapalma is of European origin, chrome-tanned, pigmented, corrected top-grain and aniline top-grain. It has excellent colourfastness and complies with the main fire-resistance tests such as CigaretteTest EN1021.

Leather

The hide upholstery of our furniture has an impressive thickness of 2 - 2.5mm. This natural pigmented material is resistant to rubbing and has excellent lightfastness.



LAMINATE

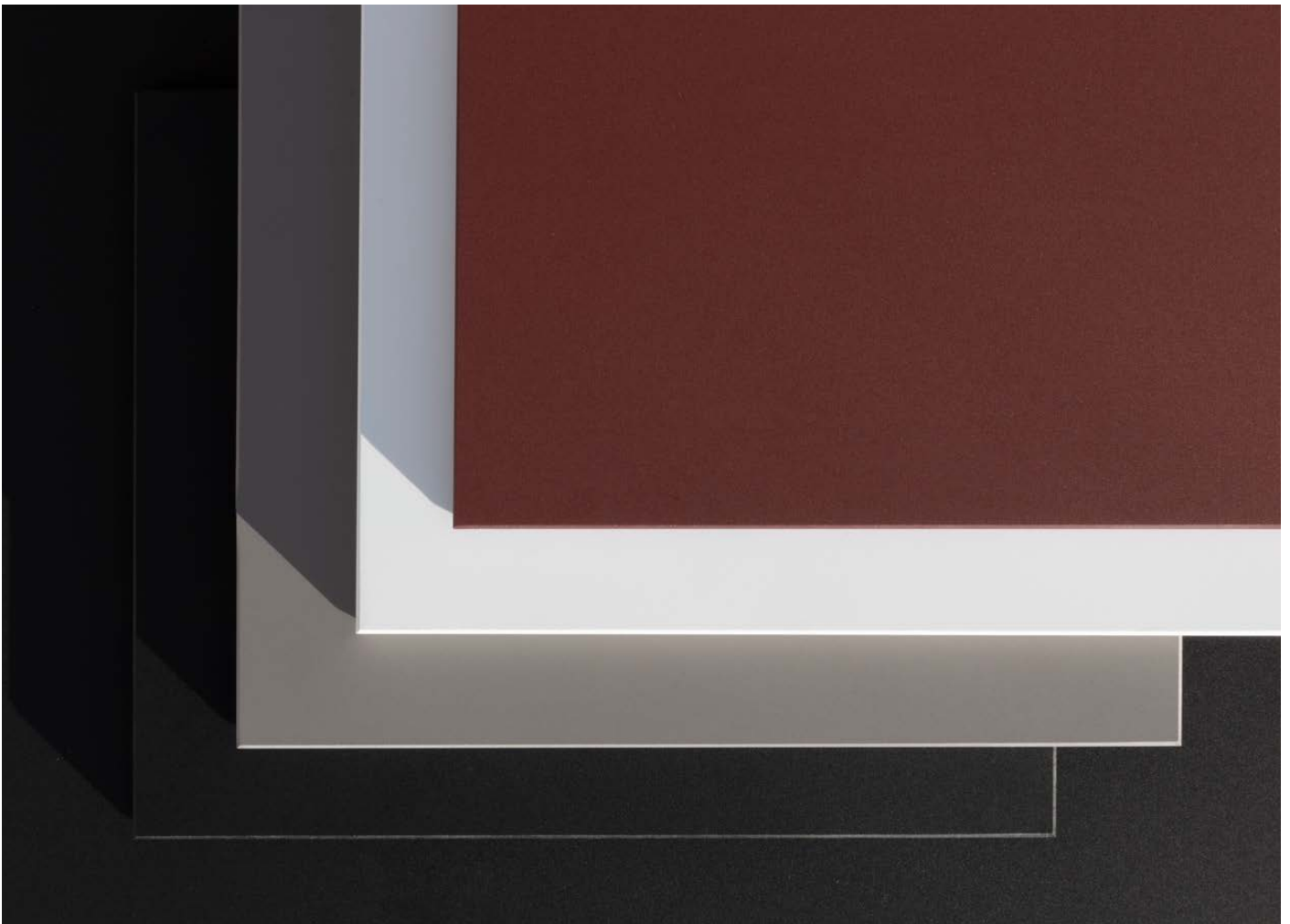
LAMINATI

HPL

High pressure laminate, or HPL, consists of layers of paper impregnated with phenolic and melamine resins, which are bonded together with a high-pressure and heat-protective coating and then applied to a substrate. The resulting surfaces are easy to clean and maintain, lightfast, odourless and resistant to alcohol, organic solvents and water.

Fenix®

Fenix® is a high-performance material, highly resistant, fingerprint proof and soft to the touch, it has a slightly matt surface that results in low light reflectivity. It consists of cellulose and innovative resins. Made of 70% layers of paper, the inner layers are impregnated with thermosetting resins, whereas the outer layers are treated with new generation acrylic resins, all subjected to heat and pressure at the same time.



WOOD

LEGNO

Lapalma primarily selects European oak, ash and Canaletto walnut certified according to the main Chain of Custody control standards (FSC). Sliced logs are directly inspected at our cutters' yards: the process of selecting and choosing the best pieces is entrusted to the experience of our employees, who then process individual sheets to obtain semi-finished products for Lapalma's end products.

At Lapalma, all the stages involved in the processing of wood products combine complex industrial technology with craftsmanship and experience. The outcome is a natural product that is controlled yet never identical, a natural wood type.

We use only matt open-pore acrylic varnishes to protect our wood finishes. They make products resistant while preventing any changes in the naturalness and aesthetic variety of this living material. Lots may therefore vary in colour and grain. This is not to be considered the result of faulty production but a value-added feature and a guarantee of the naturalness of our products.



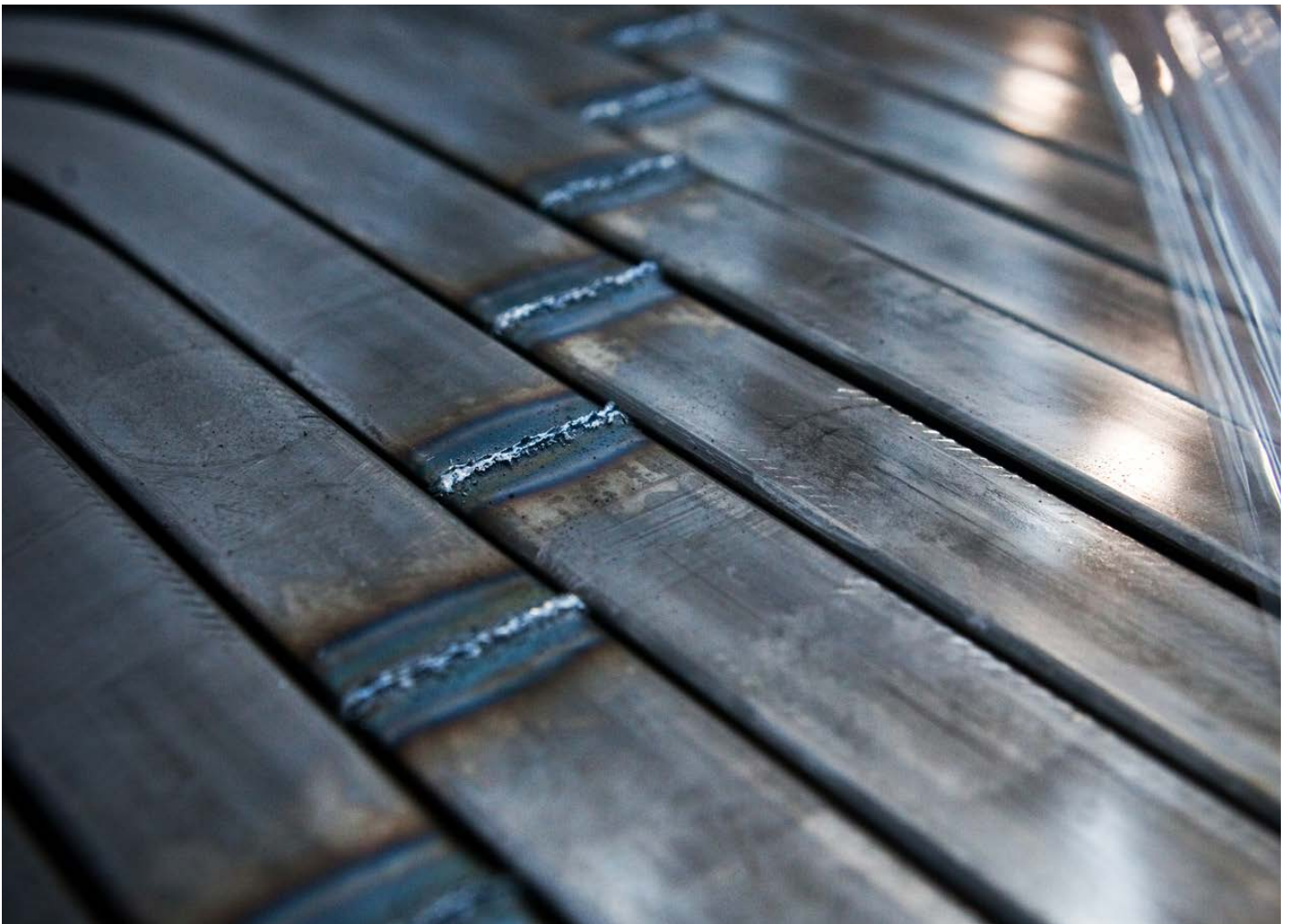
METAL

METALLO

Working with metal, as well as wood, is in our company's DNA.

All metal components are made of partly recycled and totally recyclable alloys such as carbon steel, stainless steel and aluminium. All die-cast aluminium components are made of 94% recycled aluminium, which is then infinitely recyclable, whereas extruded profiles are made of primary aluminium. We use AISI 304 stainless steel, a stainless steel alloy, which is resistant to most aggressive agents and is finished with fine glass bead blasting.

The colour range of our metals consists of polyester powder coatings featuring a high degree of surface coverage, excellent resistance and good protection for products.



PLASTICS

PLASTICHE

The materials we use to give shape to our furnishing elements include various types of high-quality plastics, selected for their high-performance. Lapalma has always been committed to reducing its use of plastic materials, bearing in mind, however, that plastic is not considered a material harmful to the environment when used for furniture that is intended to have a long life and then be recycled at the end of it. This is why the most widely used plastics are polypropylene and polyurethane, both recyclable. Some of our single-structures are made of moulded Baydur, a structural rigid polyurethane that is recyclable and has superior mechanical properties.

Recycled polypropylene

We have also introduced 75% - 85% recycled polypropylene to our collection. It is obtained from recovering plastics from separated waste collection processes. We have decided not to process it with other colours in order to make it recyclable at the end of its life.



MARBLE AND CONCRETE

MARMO E CEMENTO

Marble

The Lapalma collection includes white Carrara marble and matt black Marquina marble. As marble is a natural material, each product made of marble has a unique colour and texture.

Concrete

All cement bases are cast by hand into a mould with artisan care, each item is a unique piece: fibre-reinforced, finely sandblasted, with additives added to make it resist even the most common staining agents.



tessuto / fabric / Stoff / tissu / tejido

Cat A - Jet FIDIVI

Application

Contract and domestic use.

Description

Composition:
100% Polyester - Trevira CS®
Width: 140 cm
Weight: 260 g/m2

Tests

Abrasion
UNI EN ISO 12947-2 65000 ± 10% rubs

Pilling
UNI EN ISO 12945-2 5 (Standard picture)
Tolerance: from 4 to 5

Colour fastness
to rubbing UNI EN ISO 105-X12
(4/5 grey scale)
Tolerance: from 4 to 5
to light UNI EN ISO 105-B02 6 (Blue scale)
Tolerance: from 5 to 8

Flame resistance

C1
B1
M1
CRIB 5
EN 1021/1-2
IMO Res. A 652 (16) Part 8
IMO Res. A 471 (XII) Part 7
NF D 60013 Class AM 18

Care

Dry clean or clean with foam detergents.

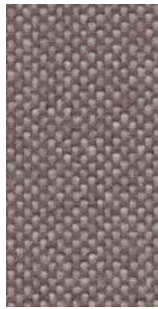
Samples are purely indicative because of natural inconsistencies that occur in the raw materials. As a result there may be small differences in the product delivered.



Cat A - Jet FIDIVI



2024



9109



9108



2012



2010



9607



9605



9606



9604



6098



9603



9602



6013



9601



6095



6056



9600



9610



6007



9609



9608



6091



6014



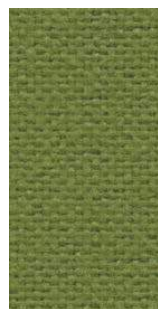
9701



7041



9702



7025



9704



7014



7034



9703



8001



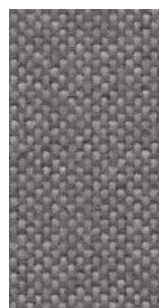
9803



8078



9804



9805



8009



9294



9281



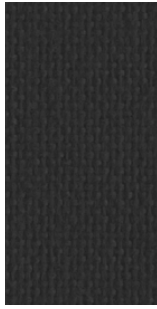
8017

tessuto / fabric / Stoff / tissu / tejido

Cat A - Jet FIDIVI



9806



8033

tessuto / fabric / Stoff / tissu / tejido

Cat A - Maya FIDIVI

Application

Contract and domestic use.

Description

Composition:
100% Polyester - Trevira CS®

Width: 140 cm

Weight: 420 g/m2

Tests

Abrasion
UNI EN ISO 12947-2 100000 ± 10% rubs

Pilling
UNI EN ISO 12945-2 5 (Standard picture)
Tolerance: from 4 to 5

Colour fastness
to rubbing UNI EN ISO 105-X12
(4/5 grey scale)
Tolerance: from 4 to 5
to light UNI EN ISO 105-B02 6 (Blue scale)
Tolerance: from 5 to 8

Flame resistance

C1
B1
M1
CRIB 5
EN 1021/1-2
IMO Res. A 652 (16) Part 8
IMO Res. A 471 (XII) Part 7
BS 7176 Medium Hazard
NF D 60013 Class AM 18

Care

Dry clean or clean with foam detergents.

Samples are purely indicative because of natural inconsistencies that occur in the raw materials. As a result there may be small differences in the product delivered.



Cat A - Maya FIDIVI



9805



7020



9704



9703



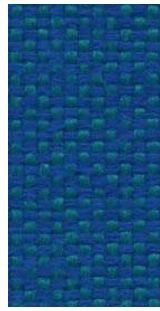
9702



7009



9705



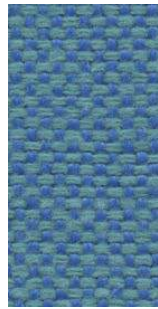
9602



6014



6091



9601



6006



6075



9603



6080



9604



9501



9503



9502

tessuto / fabric / Stoff / tissu / tejido

Cat A - Medley GABRIEL

Design

Mette Krebs Petersen

Application

Offices, hotels, institutions, domestic use.

Description

Composition:
100% Polyester

Width: 140 cm

Weight: app. 510 g/lin.m

Tests

Abrasion
App. 75.000 Martindale rubs
EN ISO 12947-2

Pilling
Note 4, EN ISO 12945-2

Light fastness
Note 5-7, ISO 105-B02

Flame resistance
BS EN 1021 1&2
BS 5852 Part 1 0,1 Cigarette & match
California Bulletin CAL 117-E-Class 1
Class Uno UNI 9175 Class 1 | EMME
CA TB 117-2013
ÖNORM B 3825-B2-3800-Q1 UK

Care

Dry clean or clean with foam detergents.

Samples are purely indicative because of natural inconsistencies that occur in the raw materials. As a result there may be small differences in the product delivered.



66008



60999



60167



60004



60003



61189



61002



61003



62054



67002



61004



68005



68002



62002



68114



68115



67054



67053



67006



66007



66010



66144



67052



66009

Cat A - Medley GABRIEL



66145



65086



65012



65011



64124



64125



64123



64019



63013



63017



63016



63063



63064

tessuto / fabric / Stoff / tissu / tejido

Cat B - Capture GABRIEL

Application

Contract and domestic use.

Description

Composition:
85% new Zealand wool, 15% polyamide
Width: 140 cm
Weight: app. 475 g/lin.m

Tests

Abrasion
App. 200.000 Martindale rubs
EN ISO 12947

Pilling
Note 4-5, EN ISO 12945

Light fastness
Note 5-7, ISO 105-B02

Flame resistance
EN 1021 1/2
BS 5852 Part 1
BS 5852, part 5 (with treatment)
DIN 4102 B2
UNI 9175/UNI 9176, 1 I-M
US Cal. Tech. Bull. 117.2013

Care

Dry clean or clean with foam
detergents.

Samples are purely indicative because of natural inconsistencies that occur in the raw materials. As a result there may be small differences in the product delivered.



Cat B - Capture GABRIEL



6901



4801



6701



6302



6202



4501



7001



5201



4901



4902



6602



6001



5002



5001



6601



7101



5101



5301



6501

tessuto / fabric / Stoff / tissu / tejido

Cat B - Crisp GABRIEL

Application

Contract and domestic use.

Description

Composition:
93% new Zealand wool, 7% polyamide
Width: 140 cm
Weight: app. 460 g/lin.m

Tests

Abrasion
App. 200.000 Martindale rubs
EN ISO 12947-2

Pilling
Note 4-5, EN ISO 12945-2

Light fastness
Note 5-7, ISO 105-B02

Flame resistance
EN 1021 1/2
BS 5852 Part 1 0,1
UNI 9175 1 I-M
US Cal. Tech. Bull. 117.2013
IMO MSC 307(88)

Care

Dry clean or clean with foam
detergents.

Samples are purely indicative because of natural inconsistencies that occur in the raw materials. As a result there may be small differences in the product delivered.



Cat B - Crisp GABRIEL



4601



4122



4741



4751



4602



4603



4723



4731



4201



4605



4752



4761



4117



4203



4211



4771



Cat B - Nattè SUNBRELLA

Application

Contract and domestic use.

Description

Composition:
100% Sunbrella® Acrylic
Width: 140 cm
Weight: app. 385 g/lin.m

Tests

Water-Repellent
Spray test ISO 4920 class 5
Colour fastness
UV indoor ISO105B02 class 8
Weather outdoor ISO105B04 1000H
Class 4-5
Dry friction ISO105X12 Class 5

Care

Dry clean or clean with foam
detergents.

Samples are purely indicative because of natural inconsistencies that occur in the raw materials. As a result there may be small differences in the product delivered.





Cat B - Nattè SUNBRELLA



5073 140
Cadey Grey



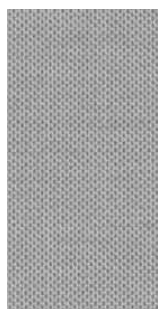
5075 140
Charcoal



5076 140
Marine



5077 140
Antique



5078 140
Stone



P048
Clay



Cat B - Iris RADA

Application

Contract and domestic use.

Description

Composition:
100% PET RECYCLED
(made with recycled plastic bottles)
Width: 140 cm
Weight: app. 800 g/lin.m

Tests

Abrasion
App. 100.000 Martindale rubs
EN ISO 12947
Pilling
dry 4-5, EN ISO 12945
wet 4, EN ISO 12945
Light fastness 7, ISO 105-B02
Flame resistance
EN 1021-1/2
BS 5852, flame
BS 5852, cigarette test
IMO FTP-8 Res.A652
UNI 9175, class 1 I-M
US Cal. Tech. Bull. 117.2013
Flame retardants
According to GB/T 24279-1:2018

Care

Dry clean or clean with foam detergents.

Samples are purely indicative because of natural inconsistencies that occur in the raw materials. As a result there may be small differences in the product delivered.



tessuto / fabric / Stoff / tissu / tejido

Cat B - Grain GABRIEL

Application

Offices, hotels, institutions,
domestic use.

Tests

Abrasion
App. 100,000 Martindale rubs EN ISO
12947-2

Pilling
Note 5, EN ISO 12945-2

Light fastness
Note 5-7, ISO 105-B02

Flame resistance
BS EN 1021 1&2 Cigarette and Match
BS EN 1021-1 Cigarette
CA TB 117-2013

Care

Dry clean or clean with foam detergents.

Samples are purely indicative because of
natural inconsistencies that occur in the
raw materials. As a result there may be
small differences in the product delivered.



Cat B - Grain GABRIEL



61255



61256



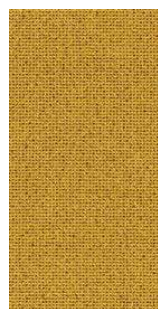
62016



62121



62122



62123



63117



63118



64041



64249



64250



64251



66216



66231



66232



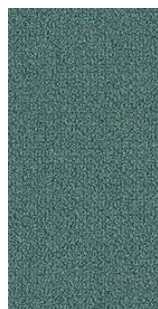
66233



66234



66235



66236



66237



68155



68243



68257



68258



68259



68260

tessuto / fabric / Stoff / tissu / tejido

Cat C - Canvas 2 KVADRAT

Design

Giulio Ridolfo

Application

Offices, hotels,
institutions, domestic use.

Description

Composition:
90% new wool, 10% nylon
Yarn type: Worsted
Binding: Semi-plain weave
Width: 140 cm
Weight: app. 480 g/lin.m

Tests

Abrasion
App. 100.000 Martindale rubs
EN ISO 12947
Pilling
Note 4-5, EN ISO 12945
Light fastness
Note 5-7, ISO 105-B02

Flame resistance

EN 1021-1/2
BS 5852 part 1
BS 5852, ignition source 2-3
DIN 4102 B2
Önorm B1/Q1
NF D 60 013
UNI 9175, 1IM
US Cal. Tech. Bull. 117
IMO A.652(16)

Care

Dry clean or clean with foam
detergents.

Samples are purely indicative because of
natural inconsistencies that occur in the
raw materials. As a result there may be
small differences in the product delivered.



Cat C - Canvas 2 KVADRAT



684



764



854



996



974



984



364



674



694



654



576



644



356



614



566



546



556



454



254



936



374

tessuto / fabric / Stoff / tissu / tejido

Cat C - Clara 2 KVADRAT

Design

Anne Birgitte Hansen

Application

Offices, hotels,
institutions, domestic use.

Description

Composition:
92% new wool worsted, 8% nylon
Yarn type: Staple, worsted
Binding: Semi-plain weave
Width: 138 cm
Weight: app. 400 g/lin.m

Tests

Abrasion
App. 80.000 Martindale rubs,
EN ISO 12947

Pilling
Note 4, EN ISO 12945

Light fastness
Note 5-7, ISO 105-B02

Flame resistance
EN 1021-1/2
BS 5852, ignition source 2-3
DIN 4102 B2
NF D 60 013
UNI 9175 11M
US Cal. Tech. Bull. 117, Sec. E
NFPA 260
IMO A.652(16)

Care

Vacuuming and dry cleaning.

Samples are purely indicative because of natural inconsistencies that occur in the raw materials. As a result there may be small differences in the product delivered.



384



388



277



273



248



244



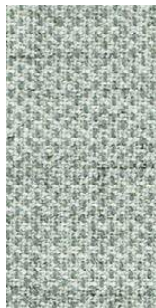
188



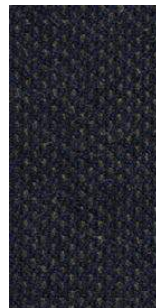
184



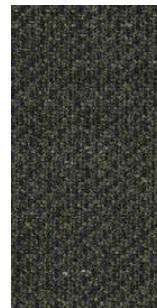
148



144



797



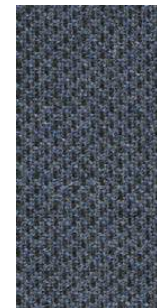
793



937



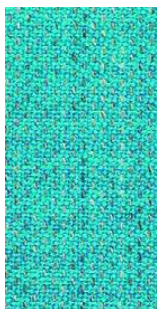
933



983



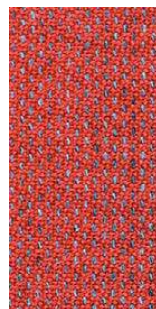
987



888



884



548



544



647



643



427



423

tessuto / fabric / Stoff / tissu / tejido

Cat C - Fiord 2 KVADRAT

Design

Louise Sigvardt & Tone Barnung

Application

Offices, hotels, institutions, domestic use.

Description

Composition:
92% new wool, 8% nylon
Yarn type: Worsted
Binding: Dobby
Width: App. 140 cm (app. 55 inches)
Weight: App. 500 g/lin.m

Tests

Abrasion
App. 60.000 Martindale rubs
EN ISO 12947

Pilling
Note 4-5, EN ISO 12945

Light fastness
Note 5-7, ISO 105-B02

Flame resistance
EN 1021-1/2
BS 5852 part 1
DIN 4102 B2
NF D 60 013
UNI 9175 1IM
US Cal. Bull. 117-2013
IMO FTP Code 2010:Part 8
With flame retardant treatment:
BS 5852 Crib 5

Care

Vacuuming and dry cleaning

Samples are purely indicative because of natural inconsistencies that occur in the raw materials. As a result there may be small differences in the product delivered.



Cat C - Fiord 2 KVADRAT



662



642



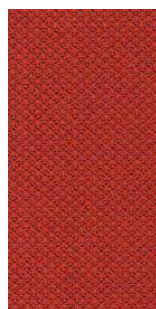
521



551



581



571



562



672



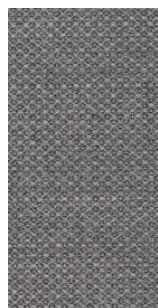
201



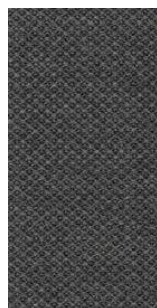
101



251



151



171



121



191

tessuto / fabric / Stoff / tissu / tejido

Cat C - Hallingdal 65 KVADRAT

Design

Nanna Ditzel

Application

Offices, hotels,
institutions, domestic use.
Great durability

Description

Composition:
70% new wool, 30% viscose

Yarn type: Stapel

Binding: Plain

Width: 130 cm

Weight: app. 795 g/lin.m

Samples are purely indicative because of natural inconsistencies that occur in the raw materials. As a result there may be small differences in the product delivered.

Tests

Abrasion
App. 100.000 Martindale rubs
EN ISO 12947

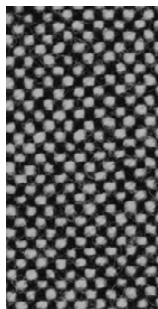
Pilling
Note 3, EN ISO 12945

Light fastness
Note 5-7, ISO 105-B02

Flame resistance
EN 1021-1/2
BS 5852, ignition source 2-5
DIN 4102 B2
Onorm B1/Q1
UNI 9175/UNI 9176, 1IM
US Cal. Tech. Bull. 117
IMO A.652(16)

Care

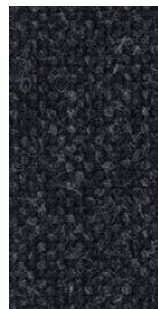
Dry clean or clean with foam
detergents.



166



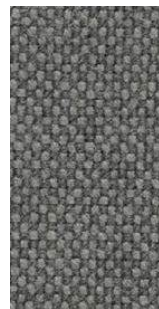
190



180



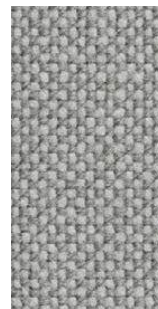
173



153



143



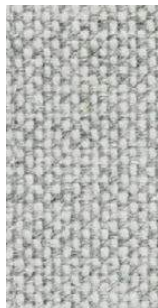
123



113



103



110



907



420



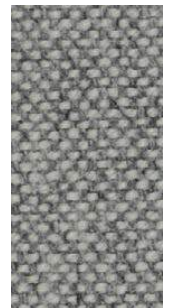
457



407



100



116



126



130



227



224



220



200



270



350

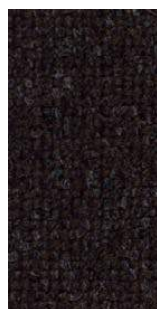
Cat C - Hallingdal 65 KVADRAT



370



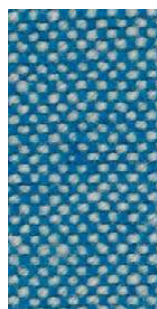
368



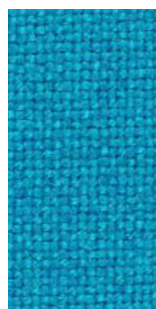
376



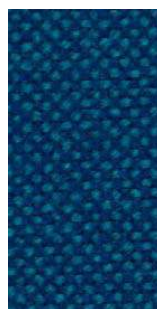
390



840



850



810



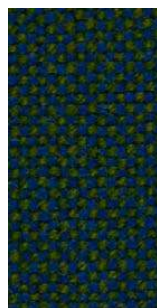
723



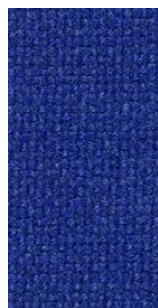
733



750



890



753



754



773



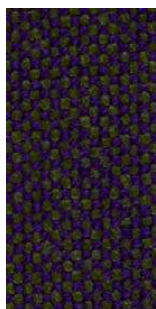
764



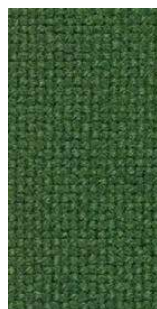
763



702



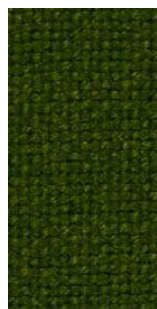
968



944



980



960



660



563



573



694



687



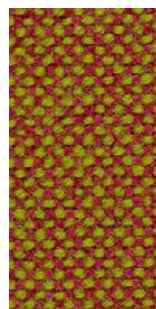
657



674



680



526



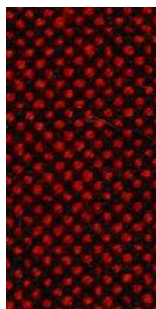
547



590



600



596

tessuto / fabric / Stoff / tissu / tejido

Cat C - Remix 3 KVADRAT

Design

Giulio Ridolfo

Application

Offices, hotels,
institutions, domestic use.
Great durability

Description

Composition:
90% new wool, 10% nylon
Yarn type: Stapel, worsted
Binding: Plain weave
Width: 140 cm
Weight: app. 460 g/lin.m

Samples are purely indicative because of natural inconsistencies that occur in the raw materials. As a result there may be small differences in the product delivered.

Tests

Abrasion
App. 100.000 Martindale rubs,
EN ISO 12947

Pilling
Note 3-4, EN ISO 12945

Light fastness
Note 5-7, ISO 105-B02

Flame resistance
EN 1021-1/2
BS 5852, ignition source 2-3
Onorm B1/Q1
UNI 9175, 1IM
Cal. Tech. Bull. 117, Sec. E
IMO A.652(16)

Care

Dry clean or clean with foam
detergents.



Cat C - Remix 3 KVADRAT



tessuto / fabric / Stoff / tissu / tejido

Cat C - Remix 3 KVADRAT



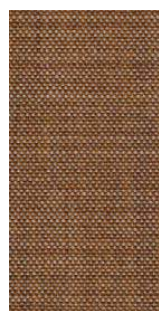
672



612



406



252



433



422



412



942

tessuto / fabric / Stoff / tissu / tejido

Cat C - Tonica 2 KVADRAT

Design

Georgina Wright

Application

Offices, hotels,
institutions, domestic use.

Description

Composition:

100% new wool

Yarn type: Stapel

Binding: Plain

Width: 140 cm

Weight: app. 700 g/lin.m

Tests

Abrasion

App. 45.000 Martindale rubs,
EN ISO 12947

Pilling

Note 4-5, EN ISO 12945

Light fastness

Note 5-7, ISO 105-B02

Flame resistance

EN 1021-1/2

BS 5852, ignition source 2-4

DIN 4102 B2

Önorm B1/Q1

UNI 9175/UNI 9176, 1IM

Cal. Tech. Bull. 117, Sec. E

IMO A.652(16)

Care

Vacuuming and dry cleaning

Samples are purely indicative because of natural inconsistencies that occur in the raw materials. As a result there may be small differences in the product delivered.



693



383



353



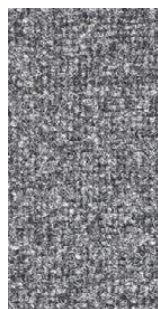
223



192



132



182



171



123



111



233



411



443



813



713



723



733



743



763



773



732



672



623



633

Cat C - Tonica 2 KVADRAT



831



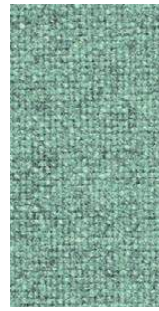
832



873



962



933



923



613



523



533



511



543



531



611



643



612



Cat C - Lapalma Smart

Application

Contract and domestic use

Description

Composition:
100% SOLUTION DYED ACRILIC
Width: 140cm
Weight Gr./mtl.: 700

Tests

Shrinkage after dry cleaning
Warp: -1 % Weft: -1 %

Shrinkage after washing
Warp: -3 % Weft: -3 %

Resistance to PILLING
after 2000 cycles
Note 4 EN ISO 12945-2

Abrasion
20000 Cicli EN ISO 12947-2

Light fastness
Note 7/8 EN ISO105B02

Color fastness to washing
Note 5 EN ISO105C06

Color fastness to dry Cleaning
Note 5 EN ISO105D01

Color fastness
to crocking Test WET
Note 4/5 EN ISO105X12

Color fastness
to crocking Test DRY
Note 5 EN ISO105X12

Care

Cleaning: Vacuuming
Mount in moist condition.
Mildew growth is not promoted
by the textile but mildew may
grow on dirt and other foreign
substances if not removed.
Keep the textile dry to avoid
mildew spores to stick.

Samples are purely indicative because of natural inconsistencies that occur in the raw materials. As a result there may be small differences in the product delivered.



211



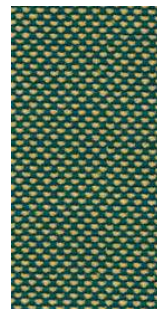
213



214



203



219



218



204



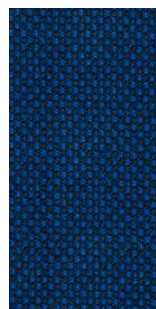
205



206



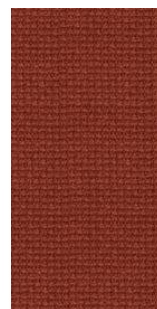
210



217



209



201



207



202



208



224



223

tessuto / fabric / Stoff / tissu / tejido

Cat C - Re-wool KVADRAT

Application

Offices, hotels, institutions,
domestic use. Great durability.

Tests

Abrasion
App. 100.000 Martindale rubs
EN ISO 12947
Pilling
Note 4, EN ISO 12945
Light fastness
Note 5-7, ISO 105-B02
Flame resistance
AS/NZS 1530.3
AS/NZS 3837 class 2
BS 5852 crib 5 with treatment *
BS 5852 ignition source 3
BS 5852 part 1
EN 1021-1/2
EN 13501 B-s2, d0 wrapped, with treatment *
IMO FTP Code 2010 Part 8
NF D 60 013
ÖNORM B1/Q1
SN 198 898 5.3 with treatment *

Care

Dry clean or clean with foam detergents.

Samples are purely indicative because of
natural inconsistencies that occur in the
raw materials. As a result there may be
small differences in the product delivered.



0108



0128



0158



0198



0218



0358



0378



0408



0448



0458



0558



0568



0628



0648



0658



0718



0758



0768



0828



0858



0868

tessuto / fabric / Stoff / tissu / tejido

Cat D - Divina MD KVADRAT

Design

Finn Skodt

Application

Offices, hotels, institutions, domestic use.

Description

Composition: 100% new wool
 Yarn type: Stapel
 Binding: 4-end broken twill
 Width: 150 cm
 Weight: app. 820 g/lin.m

Tests

Abrasion
 App. 45.000 Martindale rubs,
 EN ISO 12947

Pilling
 Note 3, EN ISO 12945

Light fastness
 Note 5-7, ISO 105-B02

Flame resistance
 EN 1021-1/2
 BS 5852, ignition source 2-5
 DIN 4102 B2
 Onorm B1/Q1
 NF D 60 013
 UNI 9175 1IM
 US Cal. Tech. Bull. 117
 AS.NZS 1530.3
 IMO A.652(16)

Care

Dry clean or clean with foam detergents.

Samples are purely indicative because of natural inconsistencies that occur in the raw materials. As a result there may be small differences in the product delivered.



tessuto / fabric / Stoff / tissu / tejido

Cat D - Divina MD KVADRAT



633



613



433

tessuto / fabric / Stoff / tissu / tejido

Cat D - Divina Melange 3 KVADRAT

Design

Finn Sködt

Application

Offices, hotels, institutions, domestic use.

Description

Composition:

100% New wool

Yarn type: Stapel

Binding: 4-end broken twill

Width: 150 cm

Weight: app. 820 g/lin.m

Tests

Abrasion

App. 45.000 Martindale rubs

EN ISO 12947

Pilling

Note 3, EN ISO 12945

Light fastness

Note 7, ISO 105-B02

Flame resistance

EN 1021-1/2

BS 5852, ignition source 2-5 DIN 4102 B2

Önorm B1/Q1

UNI 9175/UNI 9176, 11M

US Cal. Tech. Bull. 117

IMO A.652(16)

Care

Dry clean or clean with foam detergents.

Samples are purely indicative because of natural inconsistencies that occur in the raw materials. As a result there may be small differences in the product delivered.



0575/13



Flame Resistant



WOOL OF NEW ZEALAND



427



457



471



467



617



677



581



620



597



567



557



277



280



260



367



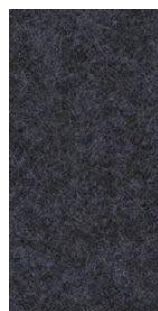
237



227



647



687



787



747



757



777



731

Cat D - Divina Melange 3 KVADRAT



547



527



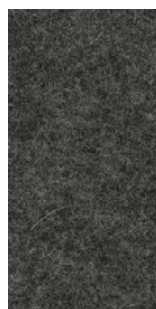
517



571



180



170



147



120



917



937



977



967



821



871

tessuto / fabric / Stoff / tissu / tejido

Cat D - Steelcut 3 KVADRAT

Design

Frans Dijkmeijer
Giulio Ridolfo

Width: 140 cm

Weight: app. 825 g/lin.m

Flame resistance

AS/NZS 1530.3
AS/NZS 3837 class 2
ASTM E84 Class A Unadhered
ASTM E84 Class B Adhered
BS 5852 crib 5 with treatment *
BS 5852 part 1
EN 1021-1/2
IMO FTP Code 2010 Part 8
NF D 60 013
NFPA 260
ÖNORM B2/Q1
SN 198 898 5.3 with treatment *
UNI 9175 11M
US Cal. Bull. 117-2013

Application

Offices, hotels,
institutions, domestic use.
Great durability

Tests

Abrasion
App. 100.000 Martindale rubs,
EN ISO 12947

Pilling
Note 3-4, EN ISO 12945

Description

Composition:
90% new wool, 10% nylon
Yarn type: Stapel, worsted
Binding: Semi-plain

Light fastness
Note 5-6, ISO 105-B02

Care

Vacuuming and dry cleaning.

Samples are purely indicative because of natural inconsistencies that occur in the raw materials. As a result there may be small differences in the product delivered.



Cat D - Steelcut 3 KVADRAT



652



655



662



672



682



695



732



742



775



780



912



922



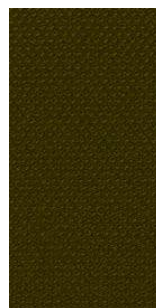
932



962



975



985

tessuto / fabric / Stoff / tissu / tejido

Cat D - Steelcut Trio 3 KVADRAT

Design

Frans Dijkmeijer
Giulio Ridolfo

Width: 140 cm

Weight: app. 770 g/lin.m

Flame resistance

EN 1021-1/2

BS 5852, ignition source 2

DIN 4102 B2

Onorm B1/Q1

Italian Class 1IM

US Cal. Tech. Bull. 117

IMO A.652(16)

Application

Offices, hotels,
institutions, domestic use.
Great durability

Tests

Abrasion

App. 100.000 Martindale rubs,

EN ISO 12947

Pilling

Note 3-4, EN ISO 12945

Care

Vacuuming and dry cleaning.

Description

Composition:

90% new wool, 10% nylon

Yarn type: Stapel, worsted

Binding: Semi-plain

Light fastness

Note 5-7, ISO 105-B02

Samples are purely indicative because of natural inconsistencies that occur in the raw materials. As a result there may be small differences in the product delivered.



0575/13



WOOL
OF
NEW ZEALAND



EU
Ecolabel
www.ecolabel.eu
DK/16/24



436



416



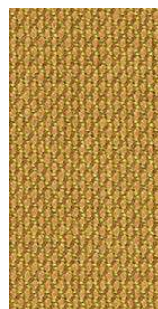
576



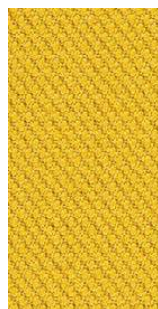
426



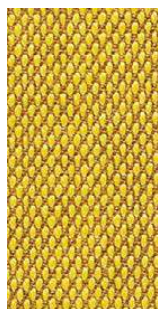
476



466



446



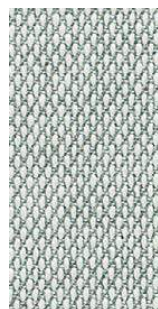
453



236



105



113



713



153



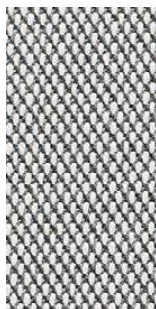
124



195



176



133



506



616



645



553



686



636

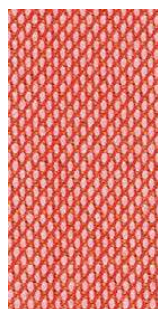


666

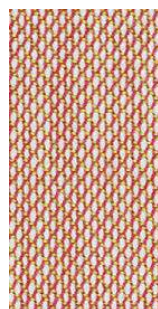
Cat D - Steelcut Trio 3 KVADRAT



533



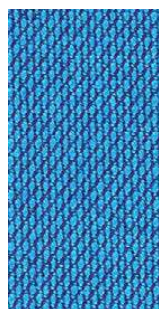
526



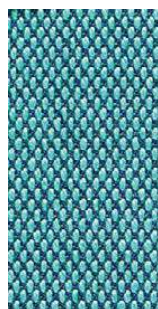
515



806



865



983



776



756



883



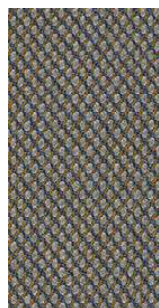
796



716



746



266



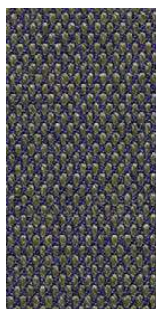
253



205



246



283



376



383



276



336



226



213



996



916



906



946



966



976



953

tessuto / fabric / Stoff / tissu / tejido

Cat E - Uniform Melange KVADRAT (Fabric to upholster SCREEN tubes only)

Design

Febrik

Application

Contract and domestic use.

Description

Composition:

68% new wool, 22% viscose

10% polyester 2mm foam

Width: 165 cm

Weight: app. 870 g/lin.m

Tests

Abrasion
App. 100.000 Martindale rubs,
EN ISO 12947

Pilling
Note 4, EN ISO 12945

Light fastness
6, ISO 105-B02

Flame resistance
EN 1021-1/2
BS 5852,part 1
DIN 4102 B2
Onorm B1/Q1
UNI 9175/UNI 9176, 11M
US Cal. Tech. Bull. 117.2013
IMO FTP code 2010:part 8

Care

Dry clean or clean with foam
detergents.

Samples are purely indicative because of natural inconsistencies that occur in the raw materials. As a result there may be small differences in the product delivered.



tessuto / fabric / Stoff / tissu / tejido

Cat E - Uniform Melange KVADRAT



813



963



833



883



983



993



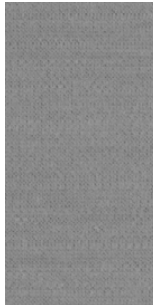
453



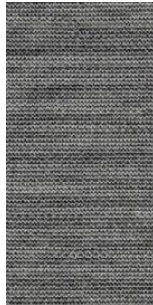
933



913



123



133



163



183



193

eco pelle / eco-leather / Kunstleder / simil cuir / ecopiel

Cat A - Grimm Fr MP

Application

Contract and domestic use

Description

Composition

31% CO - 68% PVC- 1% PU

Weight g/m² 640

Width cm 140

Tests

Abrasion

resistance cicli / cycles EN ISO 5470-2
150000

Colour fastness to light (Xenotest)

UNI EN ISO 105-B02 7 colour change

Dry rubbing

ISO 105 X-12 4/5

Wet rubbing

ISO 105 X-12 4/5

Acid perspiration

ISO 105 E-04 4/5

Alcaline perspiration

ISO 105 E-04 4/5

Bending strenght cycles

UNI 4818-13 150000

Tensile strenght

ISO1421, Met.1 550 N warp, 300N weft

Tear strenght

ISO 4674-1 40 N warp, 45N weft

Flame resistance

EN 1021-1 EN 1021-2

NF D 60-013

UNI 9175 CL. 1IM

BS 5852 crib 5

Care

Clean with a damp cloth
and mild soap.

Samples are purely indicative because of natural inconsistencies that occur in the raw materials. As a result there may be small differences in the product delivered.



Cat A - Grimm Fr MP



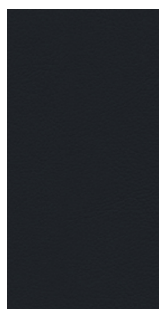
7FC



7FQ



7EM



2DJ



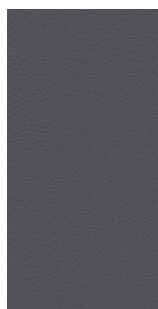
8P8



8HV



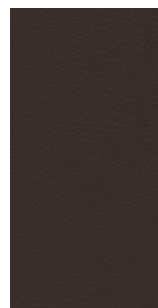
8H4



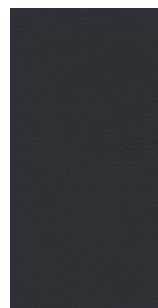
8P9



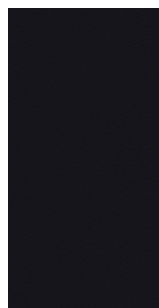
2PB



2C7



2PA



901

eco pelle / eco-leather / Kunstleder / simil cuir / ecopiel

Cat B - Valencia SPRADLING

Application

Contract and domestic use.

Description

Composition:
front PVC

back polyester cotton

Width: 137 cm

Weight: app. 890 g/lin.m

Tests

Abrasion
App. 300.000 Martindale rubs
EN ISO 12947 part 2

UV Xenotest DIN54004 blue wool scale

Antibacterial Protection

Flame resistance
EN 1021-part 1/2
BS 5852, part 2
BS 5852 crib 5
FMVSS 302
FAR 25/853

Care

Dry clean or clean with foam
detergents.

Samples are purely indicative because of natural inconsistencies that occur in the raw materials. As a result there may be small differences in the product delivered.

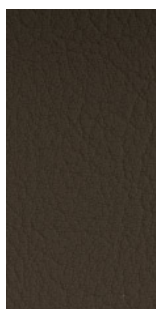


Cat B - Valencia SPRADLING

							
7001 Amethyst	3068 Marine	2108 Night	3067 Delft	3001 Lavendel	3069 Baltic	5057 Türkis	2106 Coral
							
5056 Jade	2119 Teal	4043 Platin	5065 Petrol	4042 Titan	2107 Skylight	4040 Auster	4045 Perle
							
4044 Warm Grey	2116 Camel	2117 Cashmere	0035 Terracotta	2115 Chestnut	0033 Buche	9035 Schwarz	4003 Graphite
							
2109 Citrus	2110 Avocado	5041 Apfel	5001 Olive	5069 Grün	4052 Lichtgrau	4002 Laurel	4020 Silver
							
6020 Gold	1020 Ivory	8020 Pearlescence	6003 Nectarine	9001 Sumatra	4001 Mushroom	0002 Cognac	1001 Champagne

eco pelle / eco-leather / Kunstleder / simil cuir / ecopiel

Cat B - Valencia SPRADLING



5002
Moss



2001
Merlot

pelle / soft -leather / Softleder / peau / piel

Seta

Application

Offices, hotels, institutions,
domestic use.

Description

Thickness 1,3 - 1,5 mm
Bovine hides, EU
Natural grain
Solid tone
Mineral chrome tanning
Through-dyeing aniline
Semi aniline finish

Tests

Colour fastness to light
xenotest, ≥ 4 Blue Scale
UNI EN ISO 105-B02

Samples are purely indicative because of natural inconsistencies that occur in the raw materials. As a result there may be small differences in the product delivered.

Colour fastness to -and-fro rubbing
80 alk. perspiration cycles, $\geq 3/4$
degradation and staining Grey scale
UNI EN ISO 11640-11641

Tear Strenght
 ≥ 20 N
UNI EN ISO 3377-1
Flexing endurance
dry, ≥ 20000 cycles
UNI EN ISO 5402

Cold crack resistance of finish
 -15°C , no crack
UNI EN ISO 17233

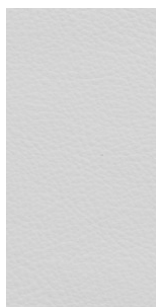
Fire resistance
UNI EN 1021-1 No ignition

Leather is a natural material therefore small imperfections cannot be considered quality issues but peculiar characteristics of the materials.

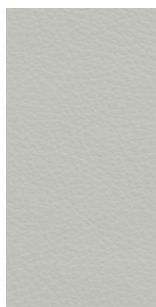
UNI EN 1021-2 No ignition
BS 5852/0 cigarette test No ignition
BS 5852/1 match test No ignition

Care

For a normal cleaning we suggest to dust with a soft and dry cloth. Any stain can be removed using a damp cloth and delicate cleaning products such as a neutral soap or detergent. Do not wipe the surface but just buffer from the edges to the stain centre. It is absolutely forbidden to use abrasive or aggressive products such as solvents, stain removers etc. Do not use steam. For the most resistant stains contact the supplier. Avoid placing leather in direct sun. Keep the leather away from the direct heat.



9000
Latte



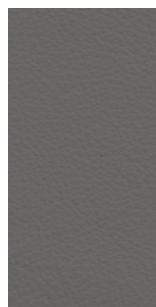
9012
Zenzero



9018
Bird



9020
Tartufo



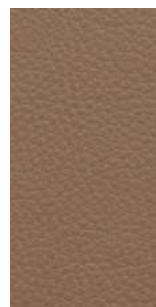
9022
Minerale



9049
Custard



9001
Dalia



9063
Acero



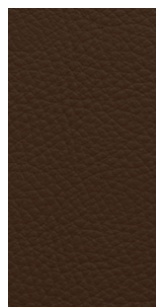
9006
Teak



9004
Mattone



9009
Acacia



9030
Cardamomo



9015
Carrara



9016
Elefante



9036
Oltremare



9073
Novembre



9033
Pepe

cuoio / leather / Leder / cuir / cuero

Application

Contract and domestic use.

Description

Thickness 2.4 - 2.5 mm

Cow hides

Vegetable tannage

Finishing Pigmented

Tests

Dry rub fastness
UNI EN ISO 11640
1000 cycles 5 Grey Scale

Wet rub fastness
UNI EN ISO 11640
250 cycles 5 Grey Scale

Light fastness
UNI EN ISO 105-B01
72h 4-5 Grey Scale

Adhesion of finishing
UNI EN ISO 11644 >15 N/10mm

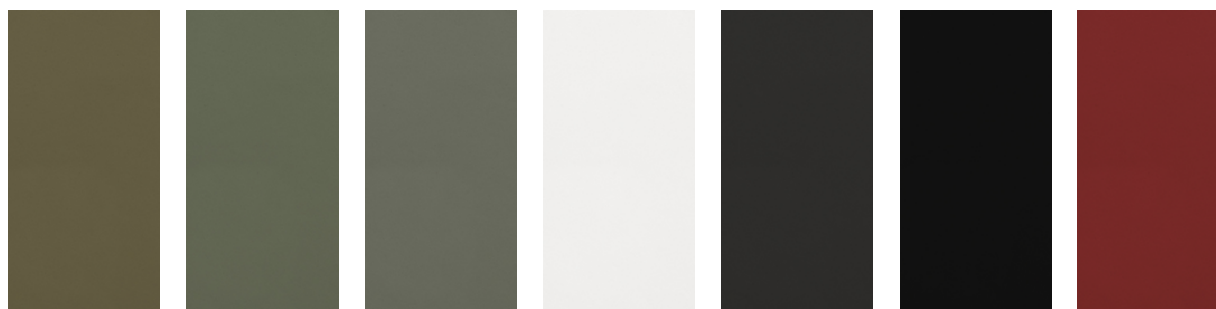
Flex resistance
UNI EN ISO 5402
20000 cycles no damages

Taber abrasion
500 cycles CS10
load 500 gr. 4-5 grey scale

Care

Dust with a soft and dry cloth for the normal cleaning. Stains can be treated with a wet cloth or cotton wool and with products for the cleaning initially more delicate like neutral soap or cleansing milk. Dry immediately after treatment. Never use abrasive or aggressive products like solvents, stain removers. Never steam it. Don't use shoe cleaning products. When a new product is used for cleaning, apply it in a "hidden" area to test its effectiveness and to avoid damages where more visible. Avoid placing leather near direct sun. Keep the leather away from heat sources. Dust regularly with a soft and dry cloth.

Samples are purely indicative because of natural inconsistencies that occur in the raw materials. As a result there may be small differences in the product delivered.



C3
Fango chiaro

C10
Grigio

C7
Fango scuro

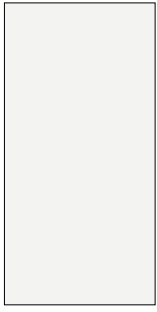
C4
Bianco

C9
Marrone scuro

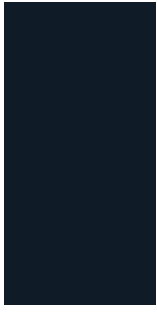
C1
Nero

C2
Rosso

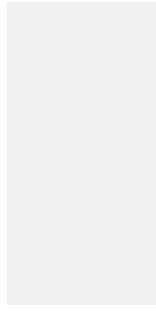
laccati / lacquered / lackiert / laqué / lacado



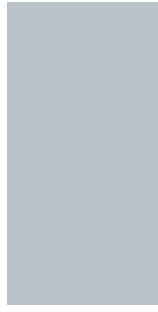
LW
white



LN
black



L4
perla



L5
celeste



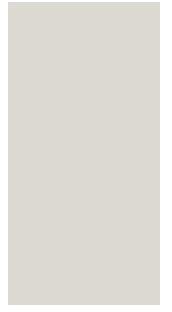
L6
mattone



L7
caffè

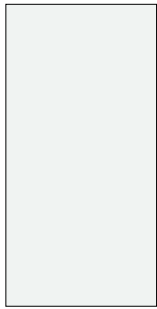


L8
oliva

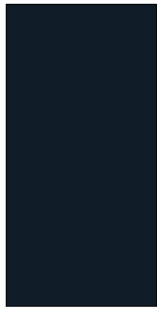


L9
tortora

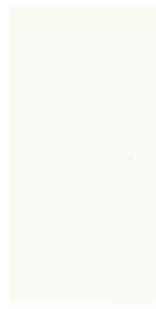
laminati / laminate / Laminat / lamifié / laminado



FW
laminato fenix 0,9
bianco
white laminate
Laminat weiß
lamifié blanc
laminado blanco



FN
laminato fenix 0,9
nero
black laminate
Laminat schwarz
lamifié noir
laminado negro



406
laminato abet 0,9
bianco
white laminate
Laminat weiß
lamifié blanc
laminado blanco

legno / wood / Holz / bois / maderá



VS
rovere sbiancato
blanched oak
Eiche gebleicht
chêne blanchi
roble blanqueado



VL
rovere noce
oak dark walnut
Eiche dunkel
nußbaum
chêne teinté wengé
roble nogal



NC
noce Canaletto
Canaletto walnut
Nußbaum Canaletto
noyer Canaletto
nogal natural



FR
frassino naturale
natural ash
Esche natur
frêne naturel
fresno natural



NO
nero poro aperto
black open pore
Eiche schwarz gebeizt
noir pore ouvert
negro poro abierto

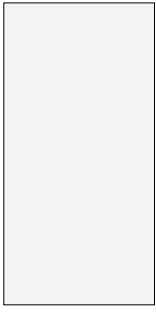


G
faggio sbiancato
blanched beech
Buche gebleicht
hêtre blanchi
haya blanqueada



GL
faggio noce scuro
beech dark walnut
Buche dunkel
nußbaum
hêtre teinté wengé
haya nogal oscuro

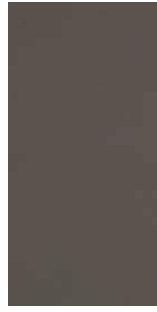
HPL 10 mm



HFW
Fenix® bianco
Fenix® white
Fenix® weiß
Fenix® blanc
Fenix® blanco



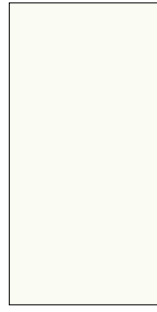
HFN
Fenix® nero
Fenix® black
Fenix® schwarz
Fenix® noir
Fenix® negro



HFG
Fenix® grigio
londra



HFR
Fenix® rosso jaipur



H406
Bianco
White
Weiß
Blanc
Blanco

metalli / metal / Metall / metal / metal



acciaio inox
micropallinato
stainless steel
sandblasted
Edelstahl
sandgestrahlt
acier inox microbillé
acero inoxidable
arenado



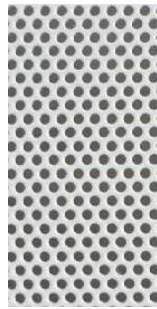
acciaio inox tela
di lino
stainless steel
linen-pattern
Edelstahl
leinenstruktur
acier inox toile de lin
acero inoxidable
tela de lin



romo satinato
mat chromed
matt verchromt
chromé mat
cromado mate

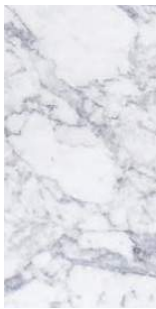


alluminio
micropallinato
aluminium
sandblasted
Aluminium
sandgestrahlt
aluminium
microbillé
aluminio arenado



lamiera forata
perforated metal
perforiertes Metall
métal perforé
metal perforado

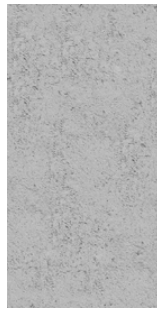
altre finiture / other finishes / weitere Ausführungen / autres finitions / otros acabados



bianco Carrara
white Carrara
Carrara-Marmor
blanc Carrara
blanco Carrara

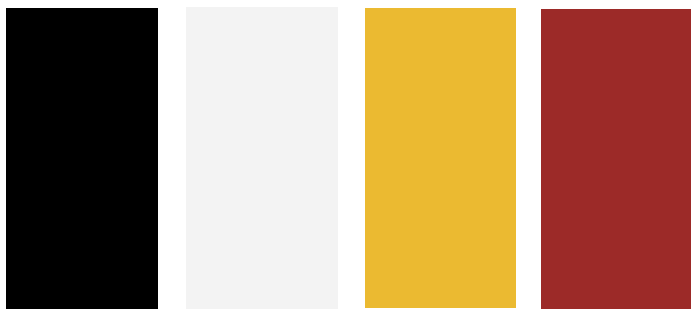


nero Marquina
black Marquina
Marquina-Marmor
noir Marquina
negro Marquina



cemento
concrete
Zement
béton
cemento

verniciature a polvere / powder coating / pulverlackiert / laqué en poudre / lacadura en polvo



05
black
RAL 9005

03
white
RAL 9016

02
senape
RAL 1023

12
rubino
NCS S 2570R



20
perla
NCS 1502Y

21
celeste
NCS 2010-B10G

22
mattone
NCS 3560-Y70R

23
caffè
NCS 8010-Y50R

24
oliva
NCS 7020-G50Y

25
tortora
PANTONE 402C

26
peltro

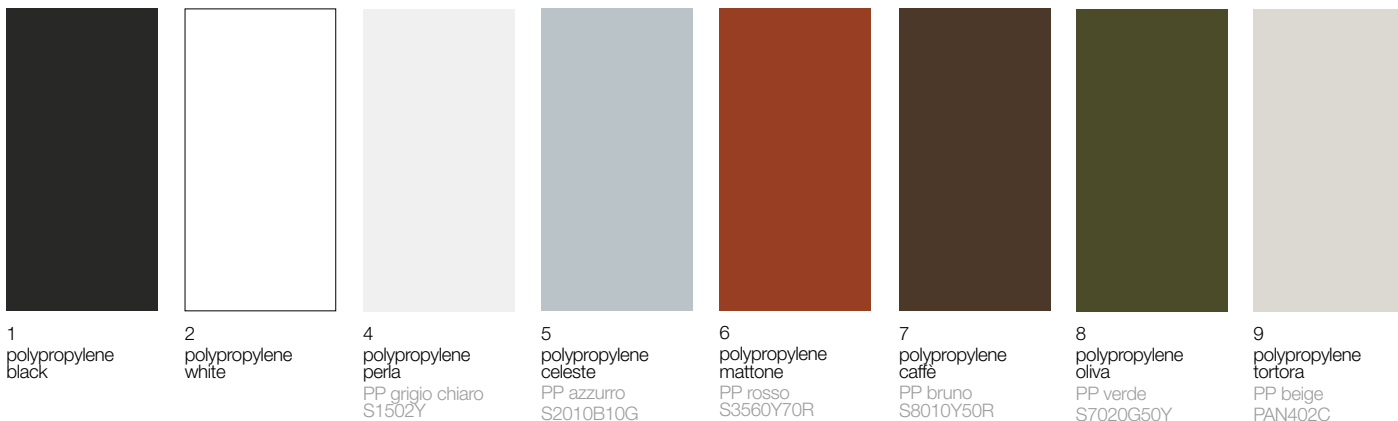
poliuretano integrale morbido / polyurethane / Polyurethan / polyuréthane / poliuretano



PU
poliuretano grigio
polyurethane grey
Polyurethan grau
polyuréthane gris
poliuretano gris

PN
poliuretano nero
polyurethane black
Polyurethan
schwarz
polyuréthane noir
poliuretano negro

plastiche / plastics / Kunststoff / plastiques / plástica



1 polypropylene black

2 polypropylene white

4 polypropylene perla
PP grigio chiaro
S1502Y

5 polypropylene celeste
PP azzurro
S2010B10G

6 polypropylene mattone
PP rosso
S3560Y70R

7 polypropylene caffè
PP bruno
S8010Y50R

8 polypropylene oliva
PP verde
S7020G50Y

9 polypropylene tortora
PP beige
PAN402C



3 recycled grey polypropylene

Application

Indoor and outdoor use.

Description

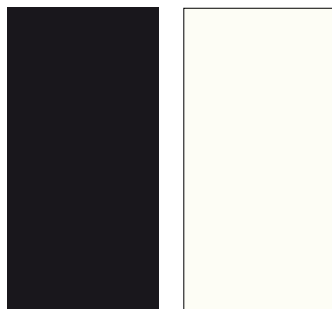
Recycled polypropylene is obtained thanks to a recycling process using up to 75% - 95% of recycled material.

Care

Dust with a soft and dry cloth for the normal cleaning. Never use abrasive or aggressive products like solvents, acid or basic solutions or ammonia. Any liquid spilt on the product must be wiped up immediately. Any changes in the surface and in colours may occur under particular conditions of weather exposure and cannot be considered a quality issue.

Samples are purely indicative because recycled polypropylene color can vary widely from grey to a lighter color.

Baydur®



N
Baydur® nero
Baydur® black
Baydur® schwarz
Baydur® noir
Baydur® negro

W
Baydur® bianco
Baydur® white
Baydur® weiß
Baydur® blanc
Baydur® blanco



meinema
interieur | ontwerp | uitvoering



info@meinema.nl



0031 - 20 311 8396

lapalma