

FRITZ HANSEN



SWAN™ PRODUCT FACT SHEET

SWAN™

The beautiful Swan™ chair was designed by Arne Jacobsen in 1958 for the lobby and lounge areas of the SAS Royal Hotel in Copenhagen. The design contains no straight lines, making it look organic and soft despite its simplicity and strong architectural appeal.

PRODUCT TYPE

Lounge chair

ENVIRONMENT

Indoor

DESIGNER / YEAR OF DESIGN

Arne Jacobsen, 1958

ABOUT THE DESIGNER

The collaboration between Arne Jacobsen and Fritz Hansen dates back to 1934. It was not until 1952 however that the team got its breakthrough with the Ant™. It was succeeded by Series 7™ in 1955, thereby enabling both Jacobsen and Fritz Hansen to write their names into furniture history.

MODELS

3320

MATERIAL

Shell: The shell is molded CombiPUR (RigiPur/hard PUR and FlexiPUR soft PUR), and back is covered with tricot wadding 100g, before the chair is upholstered with textile or leather.

Base: The star-shaped, swivel base consists either of a satin chromed steel tube connected to a base in satin polished aluminium or a powder coated steel tube connected to a base in powder coated aluminium. The leg ferrules are made in black polyamide.

Materials in %:

3320 (leather):	3320 (textile):
Aluminium: 12%	Aluminium: 12%
Leather: 32%	Textile: 28%
Steel: 30%	Steel: 31%
PUR foam: 26%	PUR foam: 27%
Plastic: 1%	Plastic: 1%

FEATURES

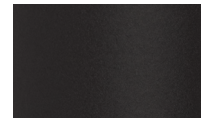
- Special seat height (+ 8 cm/3.1")
- Automatic return
- Felt glides

COLOURS

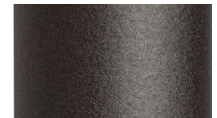
The base is available in 5 variants:



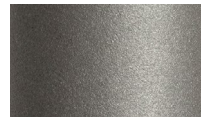
ALUMINIUM



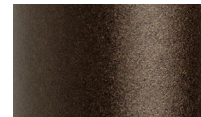
BLACK (190)



WARM GRAPHITE (180)



SILVER GREY (170)



BROWN BRONZE (390)

UPHOLSTERY

The Swan™ is available in the following selection of textile and leather types:

Textile: Christianshavn™, Capture, Comfort, Diablo, Divina, Divina Melange, Divina MD, Fame, Fiord, Hallingdal, Remix, Re-wool, Rime, Steelcut, Steelcut Trio, Sunniva, Tonus.

Leather: Essential, Aura, Embrace, Essential, Grace, Natural, Rustik.

MADE-TO-ORDER

Non-standard configurations (special colours, upholstery etc.) are available upon request at a minimum order quantity.

PRODUCTION PROCESS

Shell: The shell is made of polyurethane foam with glass fibre reinforcement. The foam for the upholstery is molded directly onto the hard PUR shell. The seat carrier consists of a spindle of diameter 28 mm automate steel and an assembly plate of 5 mm steel sheet. The individual parts are welded and surface treated with matt zinc.

Base: The base is made from a swivel centre part of welded steel tubing mounted on a 4-star base in satin polished or powder coated aluminium.

CERTIFICATION

- The Swan™ is GreenGuard Gold certified

For more information about environment and manufacturing processes, please download our environmental information sheet at: fritzhanzen.com

TEST

- EN 15373 (EN 1728) Test Level 2 General Contract use for strenght and durability

WEIGHT

Textile: 10 kg / 22.0 lb
Leather: 12 kg / 26,5 lb

COUNTRY OF ORIGIN

Poland

PRE-ASSEMBLED

Yes

PACKAGING

The chair is covered with a recycled plastic bag and shipped in a recycled cardboard box. All packaging material can be recycled.

CLEANING AND CARE

Find recommendations for cleaning and care at: fritzhanzen.com/maintenance

REPAIR, DISPOSAL AND REUSE

In case of repair and disposal the chair can be disassembled into two parts (shell and base). The plastic shell, aluminium base and other metal parts can be recycled. Check local regulations for recycling and whether there is potential for reuse.

WARRANTY

Fritz Hansen provides a five-year warranty on standard products against defects in materials and workmanship. An extended warranty of up to twenty years is provided on selected products provided they have been registered online on fritzhanzen.com/my-fh.

Standard: 5 years (Lacquer on base, Swivel, Automatic return, Fabric, Leather: Essential)

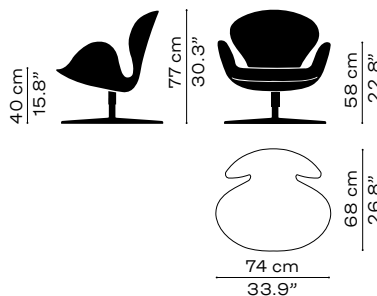
Extended: 10 years (Base, Shell, Leather: Aura, Rustik, Natural, Grace, Embrace)

On any material, fabric or leather, which is not listed in our price list on a specific product, the standard warranty is 2 years.

Additional warranty conditions can be found at: fritzhanzen.com/warranty

SPARE PARTS

A range of spare parts can be found on: fritzhanzen.com/en/Categories/Products/Spareparts

DIMENSIONS**3320****3320 (w. special height)**