

# MOTION sit-stand desks

www.meinema.nl | 0031 20 311 8396



## FEATURES

- Easy desk control
- Individually adjustable height
- Height adjustment via Bluetooth remote control application
- Smart cable management solutions

## QUALITY STANDARD

- LST EN 527-1:2011
- LST EN 527-2:2017
- LST EN 1730:2013

## TECHNICAL INFORMATION

### Desktop

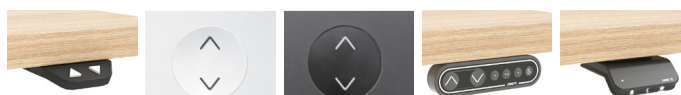
- 25 mm MFC (melamine) with 2 mm ABS edging;
- 80 mm gap between bench desktops.

### Desktop types

- Plain desktop;
- Desktop with a cut-out for grommet and wire management;
- Desktop with a scallop for wire management;
- Sliding desktop for wire management.

### Desk control button types

- BA, TA, TE - up and down drive;
- MA - up and down drive and 3 memory position;
- LA - up and down drive, 2 memory positions, automatic drive on memory positions, LED reminder, integrated Bluetooth.



BA

TE

TA

MA

LA

## Frame

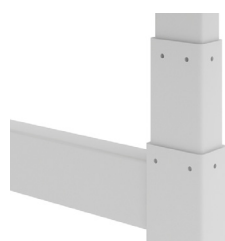
- L-shaped angle - 60x45x460mm;
- Metal tube - 40x20 mm;
- Powder coated metal, matches the colour of columns.

## Lifting columns

- Types: two (2) or three (3) steps columns;
- Anti-collision feature (only in three (3) steps columns);
- Two motors;
- Soft start and soft stop;
- Lifting speed: up to 38 mm / sec;
- Stroke length: DL05 (2) - 500 mm, DL06(3) - 650 mm;
- Rectangular tube dimensions: 50x80 mm;
- Lifting capacity: up to 80 kg;
- Powder coated metal, matches the colour of frame;
- Column levellers, up to 10 mm;
- Side column covers made of MFC. Colour combinations are possible.

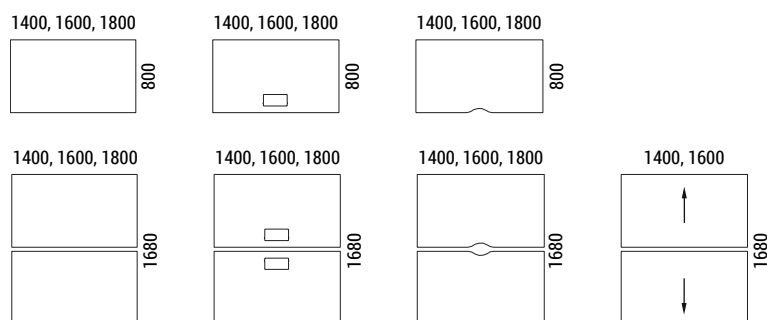


DL05(2)



DL06(3)

## RANGE



Desk height: 700-1200 mm (2), 650 -1300 mm (3)

## Electronic data power unit

- Input: 230 V (or 120 V for US market);
- Frequency: 50 Hz (or 60 Hz for US market);
- Output: 12 - 40 V, 9A;
- Power Plug: EU, UK, CH, US;
- Energy consumption: standby 0,1 W;
- Operating Cycle: 1 minute on, 9 minutes off.

## Connecting component (DOZ008):

- Made of two metal components;
- Assembly without screw;
- Matches the colour of columns and frame;
- Distance between desktops 30 mm, distance between columns 85mm.

## MATERIALS

- Melamine A: P (birch), T (beech), D1 (whitened oak), D2 (amber oak), U (walnut), M1 (white), N (grey);
- Melamine B (only for panel leg insert): M1 (white), J3 (black);
- Metal: E (white), A (black).

## GUARANTEE

- 5 years



Desk with panel legs



2-desk bench with metal legs



2-desk bench with one open metal leg



2-desk bench with panel legs

## ADDITIONAL INFORMATION

### PIEZO anti-collision technology

- The hardware based solution integrated in the 3 level columns. Minimizes the risk for damages on a desk caused by squeezing or blocking of obstacles in up and down direction.



### Things to be aware of:

- Does not work if the collision happens during the initialization phase;
- If the collision happens within the 1<sup>st</sup> sec of use or after the button on the control unit has been released, it will not work;
- If the collision happens over too long time and with the very soft object, it will not work;
- The PIEZO system is less sensitive if the collision happens close to a column or at high load.

## Must be ordered (for desktops with cut-out)

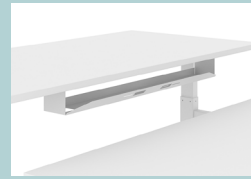


Metal grommet:  
317x119 mm, H=27 mm

## Optional



Acoustic screens



Cable trays



Cable ducts



Felt-lined metal drawers with lock



Set of desks connecting components



Cable cover (between two benches)



App control via Blue-tooth (iOS, Android)



Power socket blocks



External power socket blocks