

# MOVE executive desks

www.meinema.nl | 0031 20 311 8396

Design by Gediminas Juška | Lithuania



## FEATURES

- Unique design by Gediminas Juška;
- Height adjustment: minimum height 735 mm, maximum 1300 mm;
- Fixed height – 740 mm;
- Smart cable management;
- Built-in 4 power slots – 230V/110V AC output and optional wireless charger.

## TECHNICAL INFORMATION

### Desktop

- 27 mm MDF covered in HPL with sloping edges painted same colour as desktop;
- Short sloping edges have 45° angle and the long ones 18° angle.

### Desktop types

- Desktop with a star type cut-out for extraordinary grommet and wire management;
- Desktop with a star type cut-out for extraordinary grommet and wire management, with built in wireless charging dock.

### Internal leg\*

- 12 mm plywood covered in HPL with brushed stainless steel.

### External leg

- 12 mm plywood covered in HPL (external leg side) and lacquered veneer (inner leg side);
- Black plastic height levelling feet, H=10 mm (+5 mm).

### Lid under the desktop

- 12 mm plywood covered with lacquered veneer.

### Wire management and power connectivity

- The electricity supply for the sit-stand desk comes via external leg;
- Unique star type cut-out with removable 12 mm HPL / veneer cover;
- Lid under the desktop with access to hidden power sockets and cable management;
- Built-in power sockets for desk and external devices. 2-3 slots for sit-stand desk or 3-4 slots for fixed height desk will be free to use depending on the desk configuration (with or without wireless charging dock).

### Inner metal frame

- Metal tube – 50 x 20 mm;
- Powder coated metal, black colour by default.

### Desk control button type – LA\*

- Up and down drive;
- 2 memory positions;
- Automatic drive on memory position;
- LED reminder;
- Integrated Bluetooth.



### Lifting columns\*

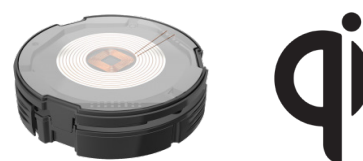
- Anti-collision feature;
- Two motors;
- Soft start and soft stop;
- Lifting speed: up to 38 mm / sec;
- Lifting capacity: up to 40 kg.

### Control box\*

- Input: 110-240V;
- Frequency: 50/60Hz;
- Output: 18V;
- Power Plug: EU, UK, CH, FR, US;
- Energy consumption: standby 0,01W;
- Operating Cycle: 1 minute on, 9 minutes off.

### Fast Qi Wireless charger (built-in under the desktop):

- Output: 15W charging;
- Qi certified.



\*Only for sit-stand desks.

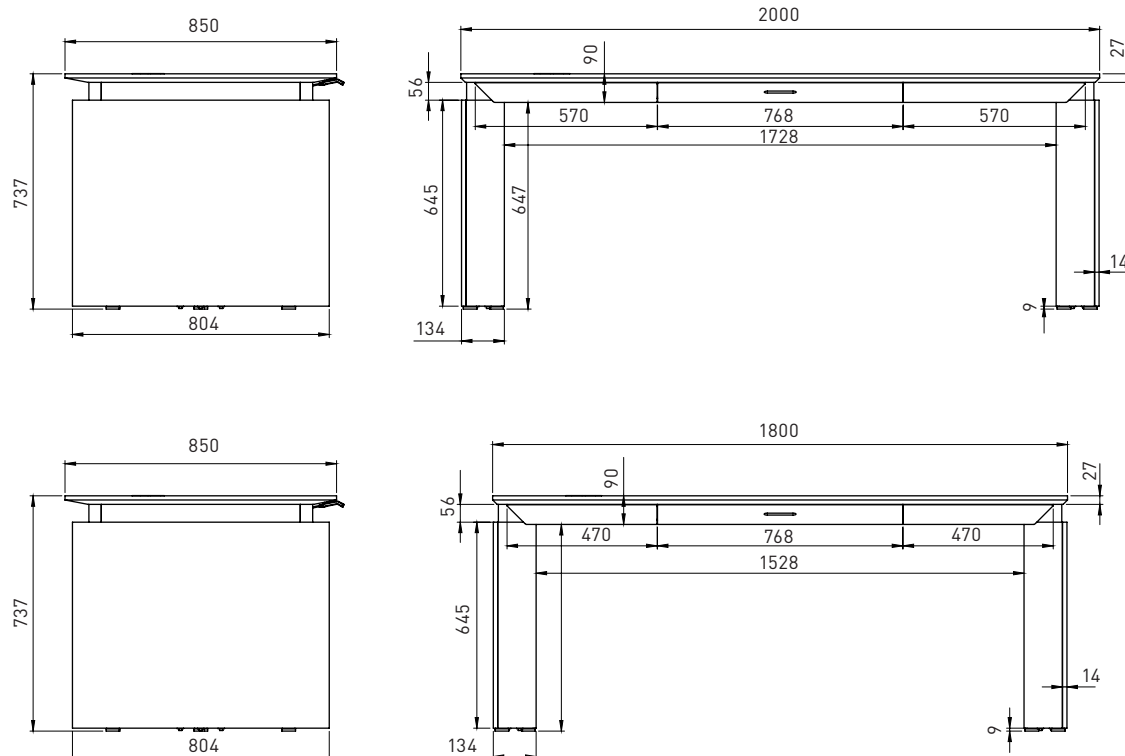
## MATERIALS

- HPL Fenix: H16 (black), H17 (grey);
- Veneer: V1 (ash), A (oak), R (walnut).

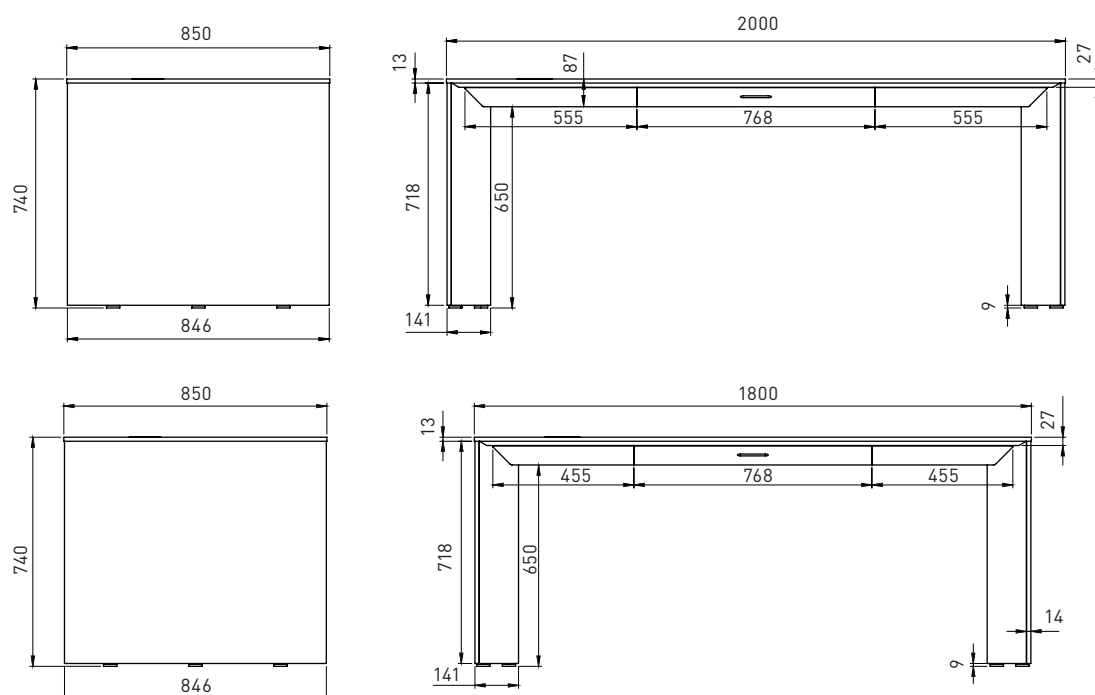
## GUARANTEE

- 5 year for furniture
- 1 year for power sockets and wires

## RANGE



Sit-stand desk with or without Qi Wireless charger



Fixed height desk with or without Qi Wireless charger

## Optional



Right fixed pedestal



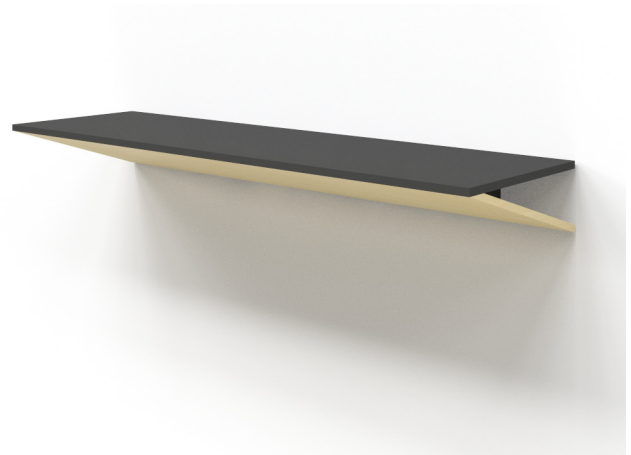
Left fixed pedestal

# MOVE cabinets

Design by Gediminas Juška | Lithuania



Wardrobes and cabinets with 4 shelves



Wall shelves

## FEATURES

- Left or right option;
- Free standing;
- High quality wood veneer with HPL Fenix;
- Adjustable shelf height.

## TECHNICAL INFORMATION

### Carcass

- 18 mm chipboard covered in wood veneer;
- Milled side panel for convenient door opening;
- Natural wood / 0,5 mm veneer lacquered edging.

### Shelves

- 18 mm MFC (melamine) with 1mm ABS edging, coloured in black by default;
- Shelf load capacity: 15 kg.

### Doors

- 18 mm plywood covered in HPL with lacquered plywood edging;
- 155° opening angle with soft closing system.

### Base

- Black plastic height levelling feet, H=17 mm (+10 mm).

## FEATURES

- High quality wood veneer with HPL Fenix.

## TECHNICAL INFORMATION

### Carcass

- 12 mm chipboard covered in HPL Fenix with 1 mm ABS edging;
- 12 mm plywood covered in wood veneer;
- 18 mm MFC (melamine) with 1 mm ABS edging, coloured in black by default;
- 25 mm MDF;
- Load capacity: 10 kg.

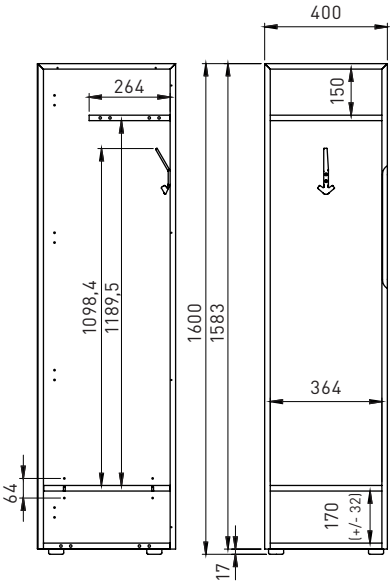
MATERIALS

- HPL Fenix: H16 (black), H17 (grey);
- Veneer: V1 (ash), A (oak), R (walnut).

GUARANTEE

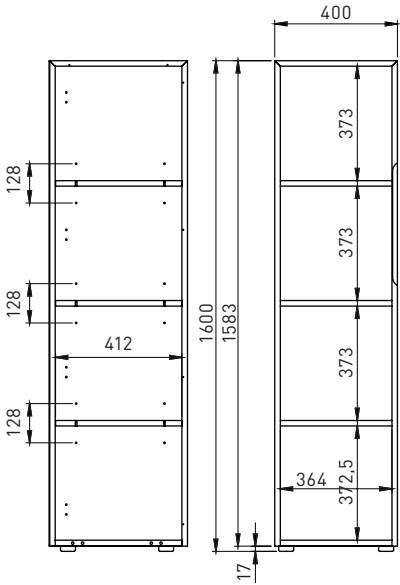
- 5 years

RANGE



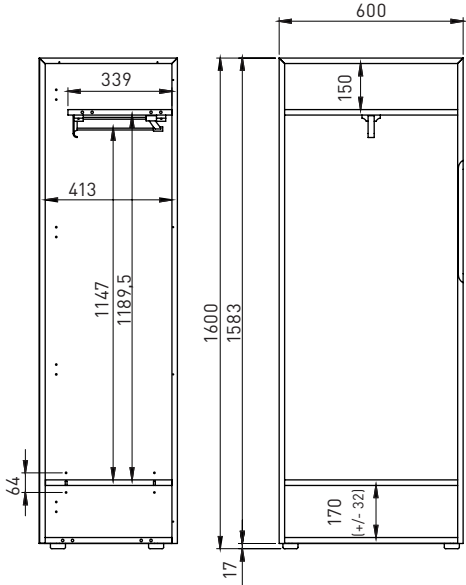
Wardrobe with hook

L/H, R/H



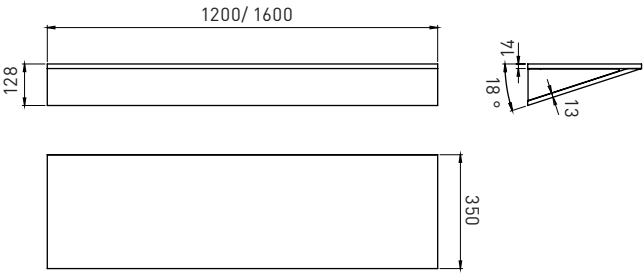
Cabinet with 4 fixed shelves

L/H, R/H



Wardrobe with pull out rail

L/H, R/H



Wall shelves

# MOVE pedestals

Design by Gediminas Juška | Lithuania



Desk pedestal

## FEATURES

- One fixed size;
- Left or right;
- Fixed to the desk leg;
- High quality wood veneer with HPL Fenix;
- Suitable for sit-stand and fixed desk versions.

## TECHNICAL INFORMATION

### Carcass

- 18 mm chipboard covered in wood veneer;
- 18 mm MFC (melamine) with 0,5 / 1 mm ABS edging, black colour by default;
- 18 mm MDF covered in wood veneer with 0,5 mm edging;
- Milled top panel for convenient drawer opening;
- Natural wood / 0,5 mm veneer lacquered edging.

### Drawers

- 18 mm plywood covered in HPL with lacquered plywood edging;
- 18 mm plywood covered in wood veneer with lacquered plywood edging;
- 15 mm chipboard covered in wood veneer with 0,5 / 1,5 mm edging;
- Pencil drawer bottom is milled and covered in black leather;
- Full extension runners with soft closing mechanism;
- Drawer load capacity – 10 kg.
- Removable bottle stand inside the bottom drawer (9 mm plywood covered in wood veneer).

### Leg

- 16 mm chipboard covered in HPL Fenix with 1 mm ABS edging;
- Black plastic height levelling feet, H= 10 mm (+10 mm).



Pedestal with two drawers

## FEATURES

- One fixed size;
- Two drawers;
- High quality wood veneer with HPL Fenix.

## TECHNICAL INFORMATION

### Carcass

- 18 mm chipboard covered in wood veneer;
- 18 mm MFC (melamine) with 0,5 / 1 mm ABS edging, in black colour by default;
- 18 mm MDF covered in wood veneer with 0,5 mm edging;
- Milled top panel for convenient drawer opening;
- Natural wood / 0,5 mm veneer lacquered edging.

### Drawers

- 18 mm plywood covered in wood veneer with lacquered plywood edging;
- 15 mm chipboard covered in wood veneer with 0,5 / 1,5 mm edging;
- Full extension runners with soft closing mechanism;
- Drawer load capacity – 10 kg.

### Leg

- 16 mm chipboard covered in HPL Fenix with 1 mm ABS edging;
- Black plastic height levelling feet, H= 10 mm (+10 mm).

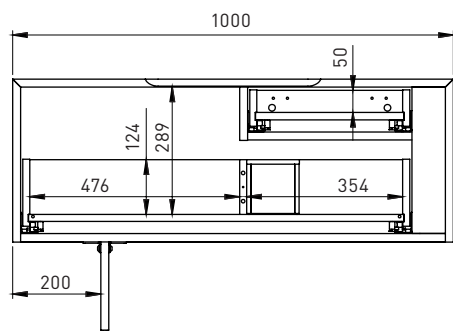
## MATERIALS

- HPL Fenix: H16 (black), H17 (grey);
- Veneer: V1 (ash), A (oak), R (walnut).

## GUARANTEE

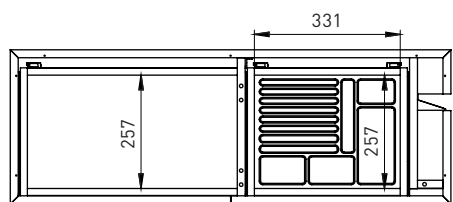
- 5 years

## RANGE

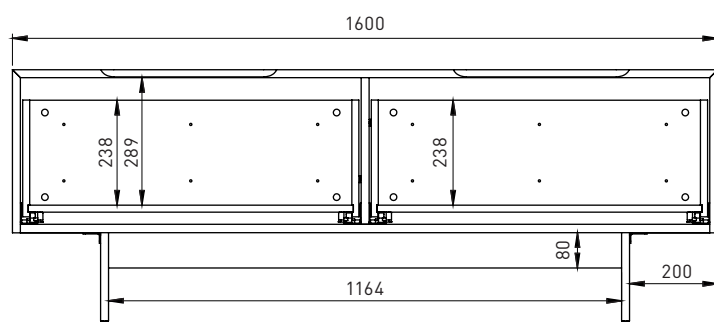


Desk pedestal

L/H, R/H



Drawers inserts included in the desk pedestal



Pedestal with two drawers

Optional (only for pedestal with two drawers)



File rails

## ADDITIONAL INFORMATION



- Desk pedestals (BVF100-101) are not free standing and must be fixed to the desk leg (left or right) with screws. Please follow the assembly instructions (included in the package).



- Pedestal drawers are without handles. There is a special milling made for convenient opening.



- Both pedestal drawers can be converted into file drawers (file rails must be ordered separately). Pedestal rail system is universal and suitable for EU / UK / US file standards.



- Pedestal BVF160 must be fixed to the wall or another MOVE cabinet through left or right side (fittings included in the package).