



THE CATALOGUE

bic.
LUXURY CARPETS

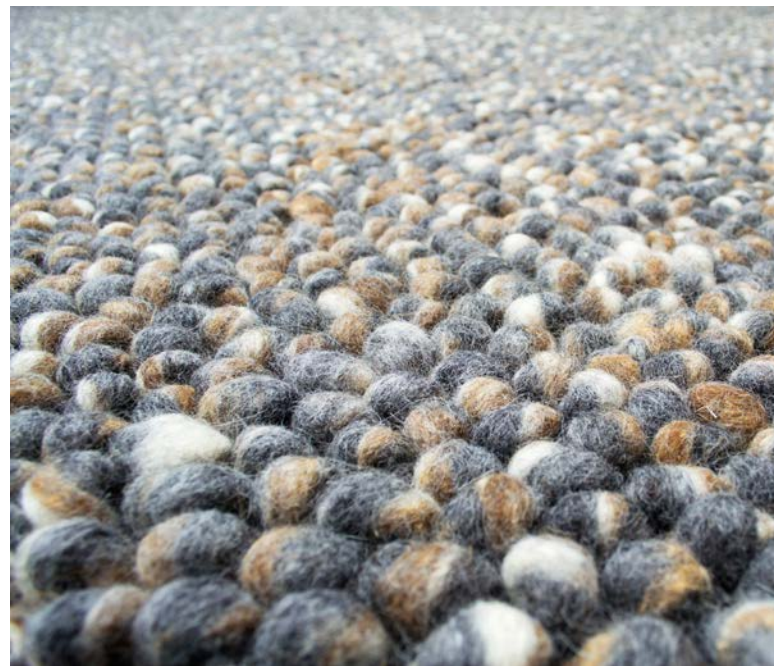
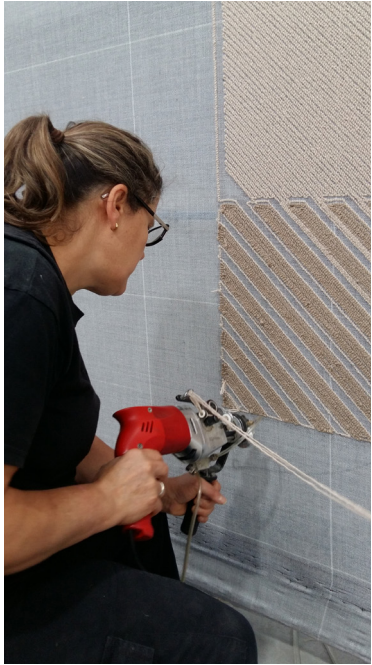


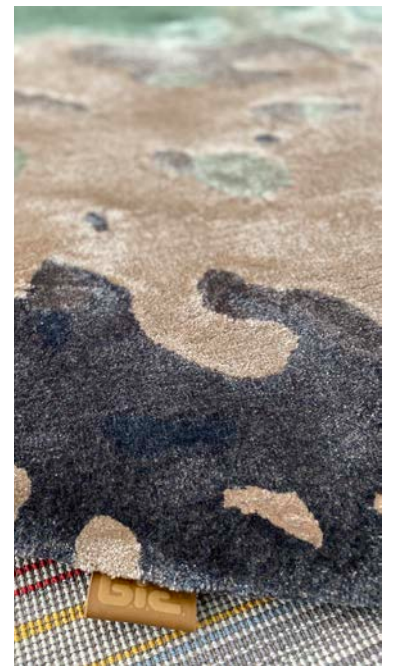
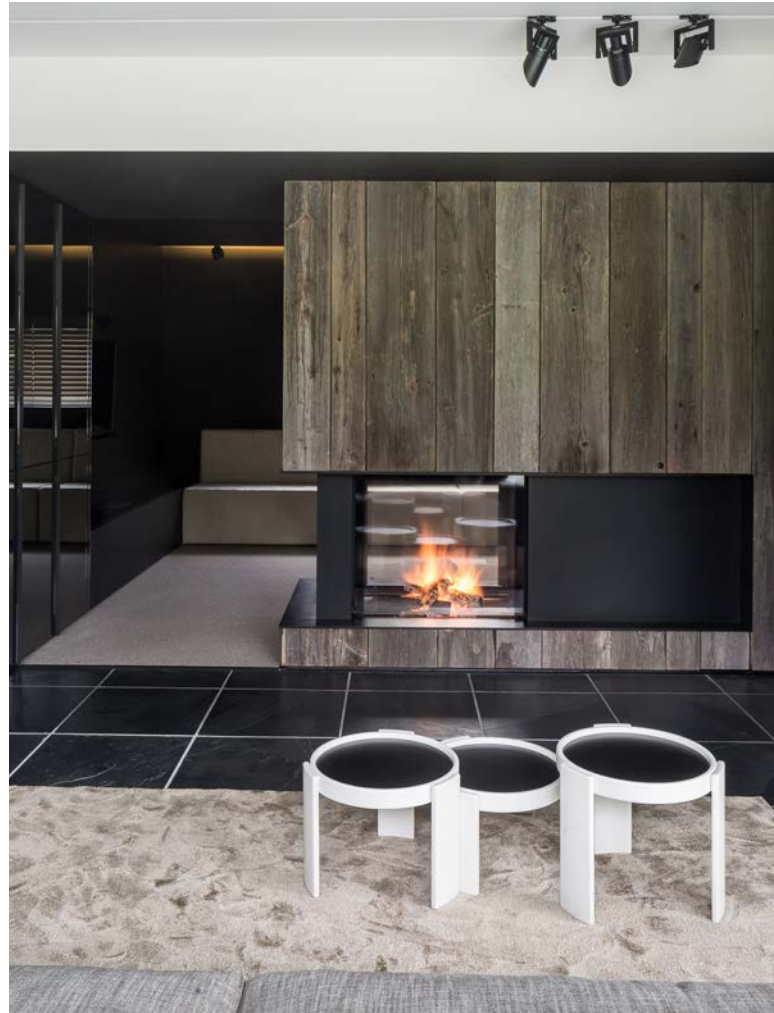
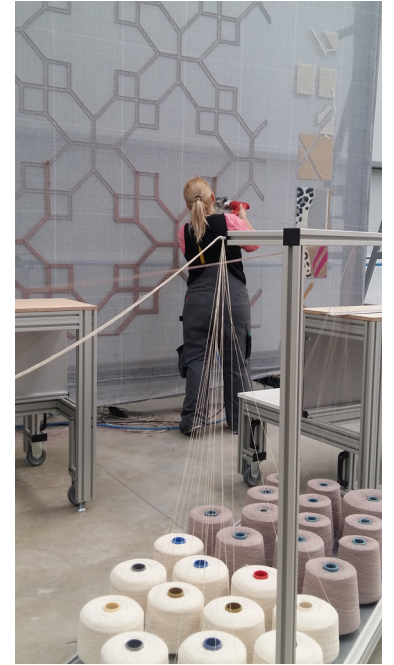
info@meinema.nl



0031 - 20 311 8396

bic.
LUXURY CARPETS





Wilton weaving stone



Dear customer,

Thank you for your interest in our products.

Since its foundation in 1956, B.I.C. carpets provides a tailored, individual service and offers **quality, flexibility and sustainability** for its customers worldwide.

Our carpets can be found all around the globe, from embassies, hotels, executive offices and luxury yachts, to the most exclusive residences.

Wilton weaving is one of most traditional ways of making durable luxury carpets on machine driven looms. Based in **Belgium**, the center of the textile business, BIC Carpets serves many clients worldwide through an extensive network of agents, importers and selected dealers.

Next to that, BIC carpets offers luxury handtufted rugs.

A modern approach to the tapestry art, handtufting results in a high quality rug of excellent appearance and touch. Versatile on design and finishing choices, it is often the solution for interior designers and decorators to embellish the floor of their projects. Choose your design, pattern, motif, style, composition, shape, colour, feeling and we will make your carpet to measure.

01 About

B.I.C.-Carpets is recognised internationally for creating high quality and beautiful bespoke carpets in the world of wilton weaving and handtuft.

DREAM BIG, THINK BIC

B.I.C.-Carpets has always invested in the search for carefully crafted carpets that can answer to the needs of every generation. As a result our strength lies in using natural materials that can last up to a lifetime.

Our continuous search to be innovative is what makes us who we are today, offering you versatile and iconic carpets. We aim to provide our customers with qualities that match their projects with conviction.

Ecological mission

We have developed our own ecological label to contribute to the ecological revolution. Our commitment to these ecological values & philosophy is as important to us as they are to our customers.

At B.I.C.-Carpets we strive to meet the environmental regulations that protect the health and safety of our planet. We are committed to reach our goals of improvement concerning reducing the waste of our production process, our choice of ecological resources, our contribution to natural power sources, etc.

OUR MISSION



We aim to take your interiorproject to the next level through meaningful design that also meets the environmental statements.



We are committed to the highest standards of quality, an aesthetic approach to materials combined with strict adherence to ecological requirements.



B.I.C. carpets is committed to providing a customized, individual service that offers value to its customers around the world. The search for new possibilities in yarns, weaves and colors is part of the daily business.



Years of craftsmanship have led to our choices of natural and sustainable materials to deliver a product that can last a lifetime. Our company's mission is to be the "renowned expert in creative and high-end solutions for woven floor coverings.

OUR EFFORTS, EXPLAINED

Over the years we have booked several results from our efforts to contribute to the sustainability of our company. Just a few listed here:

1. BIC Carpets production sites are all based in Europe, more exactly in Belgium and Portugal. This is a well-thought choice, as we have more certainty with regulations towards human rights & labour conditions. Next to that, we keep our transport costs to a minimum as we ship all carpets from Belgium, known as the center of Europe. BIC Carpets tries to lower the ecological footprint as much as possible.

2. More than 90% of the BIC Carpets suppliers are based within Europe. These are carefully selected and most collaborations have been going on for years now. The suppliers are questioned about environmental impact and their

respect for nature, animal welfare & sustainability.

3. We have developed several carpet qualities that contain ecologically responsible materials, such as wool, regenerated nylon & cotton. For instance our qualities Magic and Harbor are made from polyamide 6 yarns which can be recycled into new resources.

4. Our solar panel system installed on our production site has generated 423 635 kWh in 2020". 25% of this was used by our own production while the remaining part was injected into the net. We also invested in LED lights throughout the production site to reduce energy loss.

5. Our contract qualities have been certified by Centexbel regarding

that they fulfill the A+ criteria for their VOC levels and VOC substances of newly placed carpet to ensure the air quality of new projects.

6. We make sure all of our waste is sorted in separate containers according to the waste type. Wood pallets are collected and recycled by Geldof. We also reduce the amount of carpet cut-off leftovers by re-using most pieces to cut out carpet samples instead of wasting them.

7. We have local partnerships which we collaborate with to re-use waste, for instance by assembling a new carpet with leftover pieces by using a seam, or using a small part of carpet as a cover for a chair.

2 Collections

**Luxury
collection**

14

Atrar

16

Blitz

18

Chelha

20

Cilou

24

Eden

26

Galaxy

28

Harbor

32

Haven

34

Holden

36

Impulse

40

Isul

42

Luna

44

Magic

46

Miro

48

Nature

50

Nautilus

52

**Pavé
berberi**

54

**Pavé de
luxe**

56

Siwa

58

Stone

60

Tosh

64

**Contract
collection**

66

Atrium

68

Forum

70

Helix

72

Heritage

74

Impact

76

Mira

78

**Grove
collection**

80

**Handtuft
collection**

82

**Club
design**

84

Flow

88

Fly

90

Fly Mesh

92

**Gradient
Fine wool**

94

**Gradient
Lyocell**

96

Grid

100

Gravel

102

Mecca

104

Medina

106

Parker

108

Queen

110

Royal

112

**Shadow
2.0**

114

Trinity

116

**Design
book**

120

**What is
handtuft?**

128

References

135

03 Luxury collection

Wilton weaving is one of most traditional ways of making durable luxury carpets on machine driven looms. Based in Belgium, the center of the textile business, we serve many clients in Europe through an extensive network of agents, importers and selected dealer.





Atrar

LUXURY COLLECTION

Colors



5236 coldgrey



5207 sandy brown



1870 white



5208 new beige



5214 ebony

Atrar

With this Belgian premium wool rug, you are making a durable & stylish choice for your interior. Available in 5 different colors. The unique properties of wool ensure that you will enjoy your rug for years to come. Suitable for all applications within your home, both as a finished or wall-to-wall carpet. The shape of this product can be personalized.

Technical information

sizes: available in standard sizes, special sizes & broadloom

wilton woven: looppile

pile composition: 100% pure wool

pile weight: ca. 2300 g/m²

total weight: ca. 3000 g/m²

pile height: ca. 7 mm

total height: ca. 9 mm

backing: PES/cotton, jute & latex

width: 4 m

use: residential & general commercial use



Blitz

LUXURY COLLECTION

Colors



3820 light grey



3830 taupe



3840 aqua



3810 silver



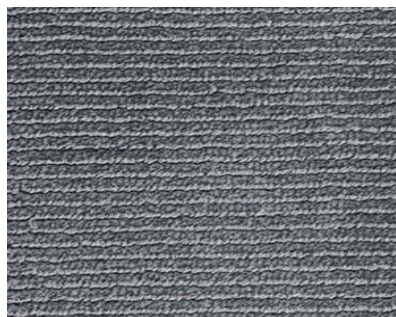
3860 brown copper



3870 ocre



3890 champagne



3910 antracite

Blitz

The Blitz collection is made of polyester, which by nature has a high luster appearance. This translates into luxury carpets of 8 vibrant colors. Due to its lustrous appearance and high level of stain resistance, polyester is a popular choice. Next to its velvety softness which is highly comfortable beneath the feet, it also feels lush and delivers a lovely sense of luxury.

Technical information

sizes: available in broadloom & rugs

wilton woven: cutpile & looppile

pile composition: 100% micro-tech PES

pile weight: ca. 3580 g/m²

total weight: ca. 4400 g/m²

pile height: ca. 15 mm

total height: ca. 17 mm

backing: PES/cotton & latex

width: 4 m

use: residential & light commercial use



Chelha

LUXURY COLLECTION

Colors



1406 grey



1405 sand

Chelha

With this Belgian premium wool rug, you are making a timeless & stylish choice for your interior. The unique properties of wool ensure that you will enjoy your rug for years to come. Suitable for all applications within your home, both as a finished or wall-to-wall carpet. The shape of this product can be personalized.

Technical information

sizes: available in all standard sizes, special sizes & broadloom

wilton woven: looppile

pile composition: 100% pure wool

pile weight: ca. 2500 g/m²

total weight: ca. 3200 g/m²

pile height: ca. 15 mm

total height: ca. 17 mm

backing: PES/cotton, jute & latex

width: 4m

use: residential & light commercial use

Eden & Cilou



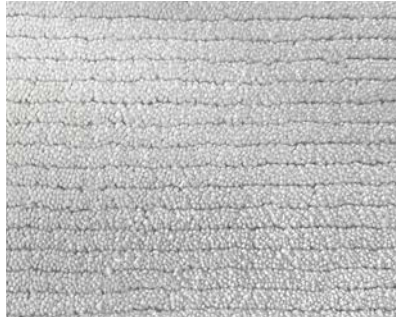




Cilou

LUXURY COLLECTION

Colors



2260 zinc



2240 dune



2280 forest green



2230 gold



2270 maize



2220 porcelain



2250 rust



2210 cream

Cilou

Cilou, charming and stylish. We connect people and spaces more than ever. Do you desire a luxurious appearance like Cilou for your interior project? Then you make no compromises and only settle for the highest values. With Cilou you choose beauty and sustainability within 1 carpet. With the subtle addition of wool, Cilou has a fine line design.

Technical information

sizes: available in broadloom & rugs

wilton woven: cutpile

pile composition: 70% regenerated nylon - 30% wool

pile weight: ca. 2670 g/m²

total weight: ca. 3600 g/m²

pile height: ca. 11 mm

total height: ca. 13 mm

backing: PES, glassfibre, jute & latex

width: 4 m

use: residential and moderate commercial use

Made in Belgium



Eden

LUXURY COLLECTION

Colors



2260 zinc



2240 dune



2280 forest green



2230 gold



2270 maize



2220 porcelain



2250 rust



2210 cream

Eden

Eden, determined and strong. Soft but resilient. No peer pressure, no prejudice. Just you, making a sustainable choice in flooring, like Eden. By this new collection we connect people and spaces more than ever. With Eden you choose for luxury and quality, with no compromises towards nature.

Technical information

sizes: available in broadloom & rugs

wilton woven: cutpile

pile composition: 100% regenerated nylon

pile weight: ca. 4590 g/m²

total weight: ca. 5400 g/m²

pile height: ca. 14 mm

total height: ca. 16 mm

backing: PES, glassfibre, jute & latex

width: 4 m

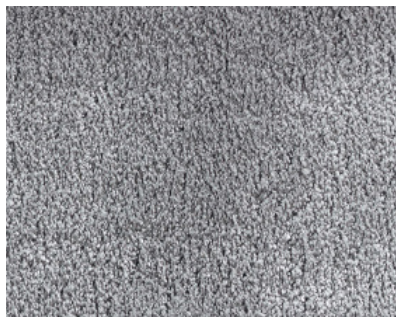
use: residential and moderate commercial use

Made in Belgium



LUXURY COLLECTION

Colors



3820 light grey



3830 taupe



3840 aqua



3810 silver



3860 copper brown



3870 ocre



3890 champagne



3910 antracite

Galaxy

The Galaxy collection is manufactured from polyester, which naturally has a high-gloss appearance. This has translated into luxury rugs in 8 vibrant colors. Because of its slightly glossy appearance and high degree of stain resistance, polyester is a popular choice. In addition to a velvety soft feel underfoot, this rug provides a wonderful sense of luxury.

Technical information

sizes: available as a finished rug and wall to wall carpet

wilton woven: cutpile

pile composition: 100% micro-tech PES

pile weight: ca. 3580 g/m²

total weight: ca. 4400 g/m²

pile height: ca. 15 mm

total height: ca. 17 mm

backing: PES/cotton & latex

width: 4 m

use: residential and light commercial use



Meet Holden - Harbor - Haven

Embracing our earthly home

We present you an eco-friendly choice in floorcovering, without any sacrifice towards beauty, design & softness.

Let us take you to the beach, with our 8 natural colors, that each represent an element you can find at the shore...

Are you ready to bring nature into your home?

Think about:

Did you know, that if we continue to live and waste like this, by 2050 there will be more pollution in the ocean than fish? At **B.I.C.-Carpets** we strive to meet the environmental regulations that protect the health and safety of our planet. These cradle to cradle carpets are part of a renewed eco-responsible mindset, so to keep this planet a safe haven for this generation and others to come.



Harbor

LUXURY COLLECTION

Colors



4440 sand shore



4420 pure pearl



4490 ocean green



4430 marram grass



4460 jetty grey



4450 drift wood



4470 cape stone



4480 boulder silver

Harbor

Think about:

harboring green buildings, harboring healthy workspaces, harboring steady livings. With the HARBOR colors in these places, you have all the aesthetics together with the design and its benefits, Think about this only: harboring me!

Technical information

sizes: available in broadloom & rugs

wilton Woven: cutpile

pile composition: 100% regenerated nylon

pile weight: ca. 1860 g/m²

total weight: ca. 2730 g/m²

pile height: ca. 6 mm

total height: ca. 7 mm

width: 4m

backing: PES/cotton, glassfibre, jute & latex

use: residential & light commercial use



Haven

LUXURY COLLECTION

Colors



3380 boulder silver



3360 jetty grey



3340 sand shore



3320 pure pearl



3390 ocean green



3370 cape stone



3350 drift wood



3330 marram grass

Haven

HAVEN's innovative yarn feels silky soft like feet slipping in the warm sand on a sunny beach. It shines like sunlight dancing on the sea surface. The unique combination of regenerated nylon and wool gives a look and feel that brings nature right into your interior. Would you like to join us in designing a safe haven for the future of our environment and all humanity?

HAVEN: to keep this place safe....and a rug to embrace!

Technical information

sizes: available in broadloom & rugs

wilton woven: cutpile

pile composition:

60% regenerated nylon - 40% wool

pile weight: ca. 2450 g/m²

total weight: ca. 3085 g/m²

pile height: ca. 11 mm

total height: ca. 13 mm

backing: PES/cotton, glassfibre, jute & latex

width: 4 m

Use: residential & light commercial use



Holden

LUXURY COLLECTION

Colors



4480 boulder silver



4470 cape stone



4450 drift wood



4460 jetty grey



4430 marram grass



4490 ocean green



4420 pure pearl



4440 sand shore

Holden

Hold me tight...ooh my golden light

A child playing on the beach, dogs running wild and a sweet couple in love... all have tasted this new quality carpet named HOLDEN and agreed that it is good!

Its innovative yarns shine like the sunlight dancing on the sea surface while your feet just want to be entwined with this soft feeling beneath. **Our HOLDEN is that look and feel that brings nature into your home**

Technical information

sizes: available in broadloom & rugs

wilton woven: cutpile

pile composition: 100% regenerated nylon

pile weight: ca. 3685 g/m²

total weight: ca. 4300 g/m²

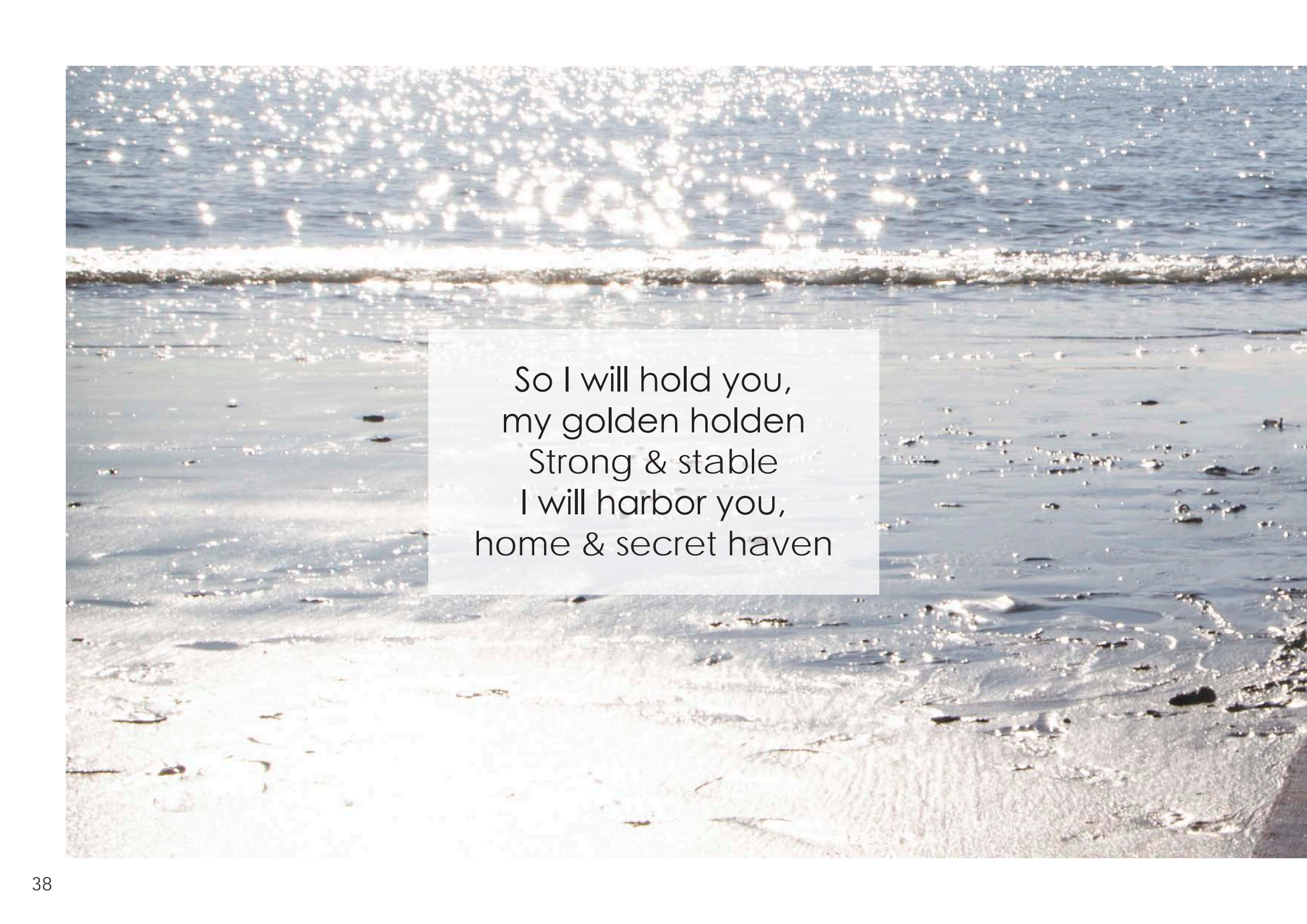
pile height: ca. 14 mm

total height: ca. 16 mm

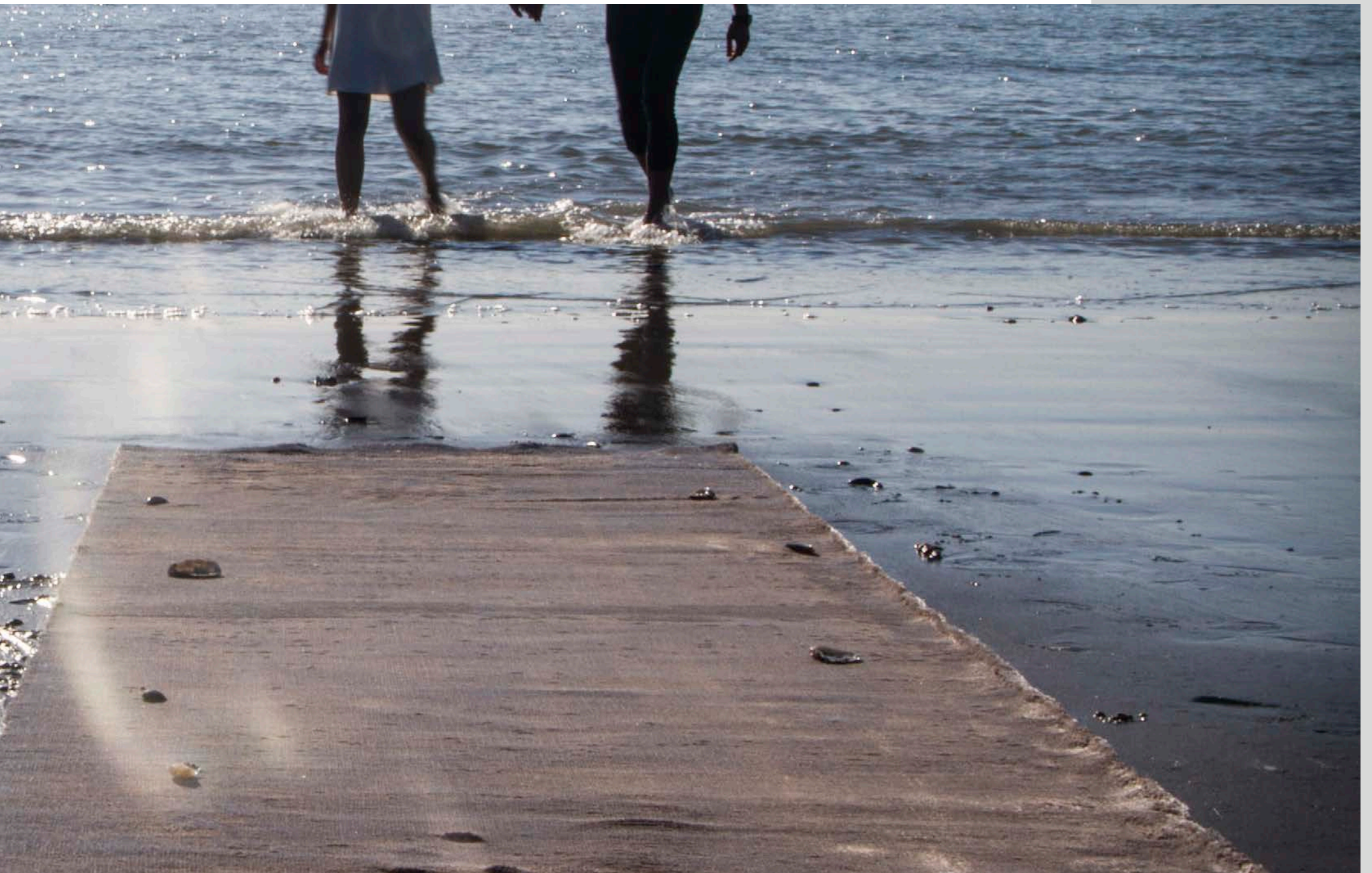
width: 4 m

backing: PES/cotton, glassfibre, jute & latex

use: residential use



So I will hold you,
my golden holden
Strong & stable
I will harbor you,
home & secret haven

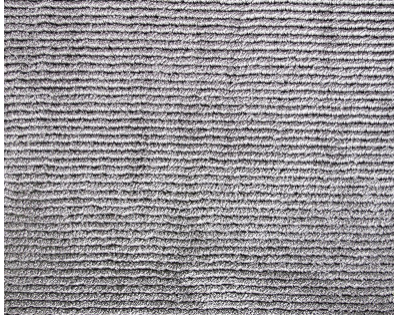




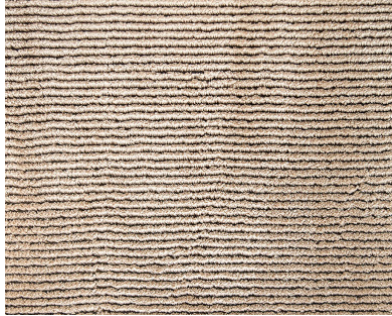
Impulse

LUXURY COLLECTION

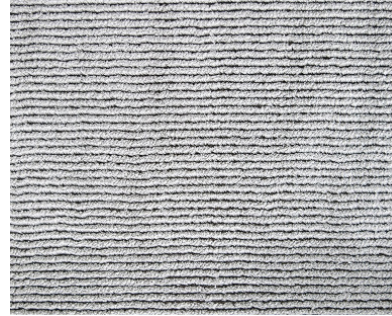
Colors



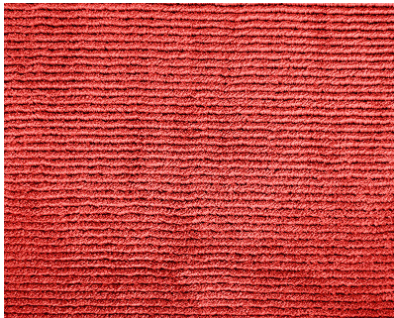
5980 gris



5950 sand



5960 silver



5908 vermell

Impulse

Impulse brings a unique combination of pure wool and polyester and combines a sublime look with a strong structure. Available in 4 colors. Impulse is mysteriously soft and feels like your feet are magnetically attached to it – now already.

Technical information

sizes: available in all standard sizes, special sizes & broadloom

wilton woven: cutpile

pile composition:

39% pure wool - 61% micro PES

pile weight: ca. 3275 g/m²

total weight: cca. 3920 g/m²

pile height: ca. 15 mm

total height: ca. 18 mm

width: 4 m

backing: PES, jute & latex

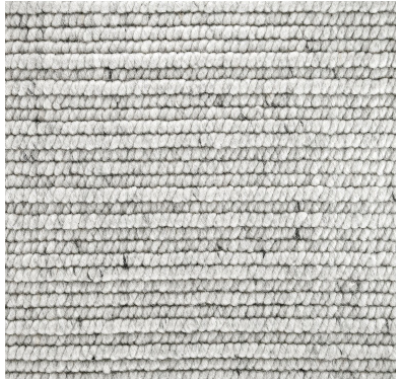
use: residential use



Isu

LUXURY COLLECTION

Colors



5136 cold grey



5107 sandy brown

Isul

With this Belgian premium wool rug, you are making a durable & stylish choice for your interior. Available in 2 different colors. The unique properties of wool ensure that you will enjoy your rug for years to come. Suitable for all applications within your home, both as a finished or wall-to-wall carpet. The shape of this product can be personalized.

Technical information

sizes: available in all standard sizes, special sizes & broadloom

wilton woven: looppile

pile composition: 100% pure wool

pile weight: ca. 2520 g/m²

total weight: cca. 3500 g/m²

pile height: ca. 11 mm

total height: ca. 15 mm

width: 4 m

backing: PES, jute & latex

use: residential & light commercial use



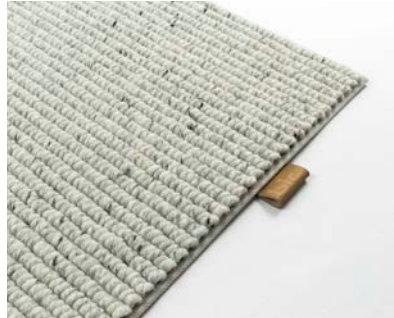
Luna

LUXURY COLLECTION

Colors



1820 charcoal



1860 coldgrey



1870 white

Luna

With this Belgian premium wool rug, you are making a durable & stylish choice for your interior. Available in 3 different colors. The unique properties of wool ensure that you will enjoy your rug for years to come. Suitable for all applications within your home, both as a finished or wall-to-wall carpet. The shape of this product can be personalized.

Technical information

sizes: available in all standard sizes, special sizes & broadloom

wilton woven: looppile

pile composition: 100% pure wool

pile weight: ca. 1850 g/m²

total weight: cca. 2600 g/m²

pile height: ca. 9 mm

total height: ca. 11 mm

width: 4 m

backing: PES, jute & latex

use: residential & light commercial use



Magic

LUXURY COLLECTION

Colors



1770 beach



1780 palladium



1750 warm grey



1790 onyx

Magic

Magic is a wonderful example of how traditional techniques can meet our modern requirements. Magic is made from renewable raw materials and has a sublime appearance and a strong synthetic structure without losing softness.

Technical information

sizes: available in broadloom & rugs

wilton woven: cutpile

pile composition: 100% regenerated nylon

pile weight: ca. 3400 g/m²

total weight: ca. 4150 g/m²

pile height: ca. 14 mm

total height: ca. 16 mm

width: 4 m

backing: PES, jute & latex

use: class 32 general commercial use





Miro

LUXURY COLLECTION

Colors



1870 white



3810 silver



3840 aqua



3890 champagne



1750 warm grey



1610 almond



1547 storm grey



5212 terracotta

Miro

BIC Carpets MIRO collection is born. The inspiration for this collection comes from ancient history, the Maori people, who's word for cotton was 'miro'. Maori you say? Well, these were the first inhabitants of New-Zealand. And guess were the fine wool that was used for this collection comes from? Yes, New Zealand. We honor their heritage alive with the luxurious MIRO carpets, gentle on the feet and made with the best natural materials.

Technical information

sizes: available in all standard sizes, special sizes & broadloom

wilton woven: cutpile looppile

pile composition:

60% wool - 40% PES/bio cotton

pile weight: ca. 3050 g/m²

total weight: ca. 3980 g/m²

pile height: ca. 18 mm

total height: ca. 20 mm

width: 4 m

backing: PES, jute & latex

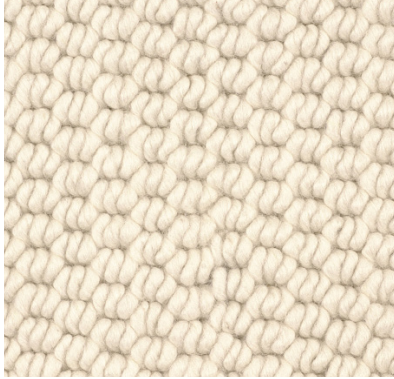
use: residential & light commercial use



Nature

LUXURY COLLECTION

Colors



150 white

Nature

With this Belgian premium wool rug, you are making a durable & stylish choice for your interior. The unique properties of wool ensure that you will enjoy your rug for years to come. Suitable for all applications within your home, both as a finished or wall-to-wall carpet. The shape of this product can be personalized.

Technical information

sizes: available in all standard sizes, special sizes & broadloom

wilton woven: looppile

pile composition: 100% pure wool

pile weight: ca. 1900 g/m²

total weight: ca. 2630 g/m²

pile height: ca. 9 mm

total height: ca. 11 mm

width: 4 m

backing: PES/cotton, jute & latex

use: residential & general commercial use

made in Belgium



LUXURY COLLECTION

Colors



1910 mineral



1920 cotton grey



1930 cherry blossom



1940 linen

Nautilus

A subtle cotton thread weaves through the natural wool structures depicting the nautilus. Made from only the highest quality natural materials, this rug reflects nature itself.

Nautilus is inspired by the shapes and beauty found in nature. Natural materials such as wool and organic cotton are used to create a product that is both beautiful and durable.

Technical information

sizes: available in all standard sizes, special sizes & broadloom

wilton woven: cutpile & looppile

pile composition:

78% wool - 22% PES/bio cotton

pile weight: ca. 3300 g/m²

total weight: ca. 4350 g/m²

Pile height: ca. 14 mm

Total height: ca. 17 mm

Width: 4 m

Backing: PES, jute & latex

Use: residential & light commercial use



Pavé Berberri

LUXURY COLLECTION

Colors



5136 cold grey



5107 sandy brown



1820 charcoal

Pavé Berberi

This flat wilton woven carpet is a perfect match for every interior. Created to last for many years and made in 100% wool.

Technical information

sizes: available in all standard sizes, special sizes & broadloom

wilton woven: looppile

pile composition: 100% wool

pile weight: ca. 1250 g/m²

total weight: ca. 2300 g/m²

pile height: ca. 5 mm

total height: ca. 8 mm

width: 4 m

backing: PES, jute & latex

use: residential & light commercial use



Pavé de luxe

LUXURY COLLECTION

Colors



5797 charcoal



5722 carrara

Pavé de luxe

Like our stone collection, pavé de luxe was inspired by cobblestones. A little bit rough, a little bit imperfect, but that's how roads are paved.

Created in 2 commercial colors.

Technical information

sizes: available in broadloom & rugs

wilton woven: looppile

pile composition: 100% wool

pile weight: ca. 1500 g/m²

total weight: ca. 2300 g/m²

pile height: ca. 15 mm

total height: ca. 15 mm

width: 3,7 m

backing: PES, jute & latex

use: residential use



Siwa

LUXURY COLLECTION

Colors



1406 grey

Siwa

With this Belgian premium wool rug, you are making a durable & stylish choice for your interior. The unique properties of wool ensure that you will enjoy your rug for years to come. Suitable for all applications within your home, both as a finished or wall-to-wall carpet. The shape of this product can be personalized.

Technical information

sizes: available in broadloom and rugs

wilton woven: looppile

pile composition: 100% wool

pile weight: ca. 2200 g/m²

total weight: ca. 2950 g/m²

pile height: ca. 10 mm

total height: ca. 11,5 mm

width: 4 m

backing: PES, jute & latex

use: residential & commercial use



LUXURY COLLECTION

Colors



290 ivoire



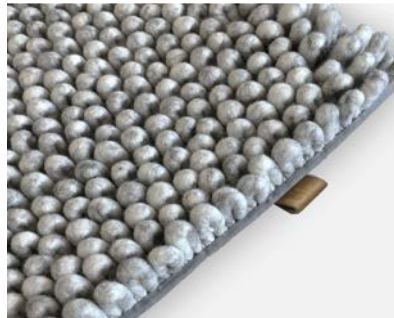
292 grege



297 charcoal



2911 alpin



2922 carrara

Stone

The story began in 1976 when Lucien Vlerick, the president of B.I.C.-Carpets at the time, was struck by the magic of the cobble stoned streets in the Greek Archipelago islands. These soft-hued, gently-rounded uneven stones later became the inspiration for an icon in the flooring world: the B.I.C. STONE carpet.

Technical information

sizes: available in all standard sizes, special sizes & broadloom

wilton woven: looppile

pile composition: 100% wool

pile weight: ca. 4950 g/m²

total weight: ca. 6100 g/m²

pile height: ca. 30 mm

total height: ca. 33 mm

width: 4 m

backing: PES, jute & latex

use: residential & light commercial use

INSPIRED BY NATURE

Nature as a source of inspiration

The story began in 1976 when Lucien Vlerick, the president of B.I.C.-Carpets at the time, was struck by the magic of the cobble stoned streets in the Greek Archipelago islands. These soft-hued, gently-rounded uneven stones later became the inspiration for an icon in the flooring world: the B.I.C. STONE carpet.

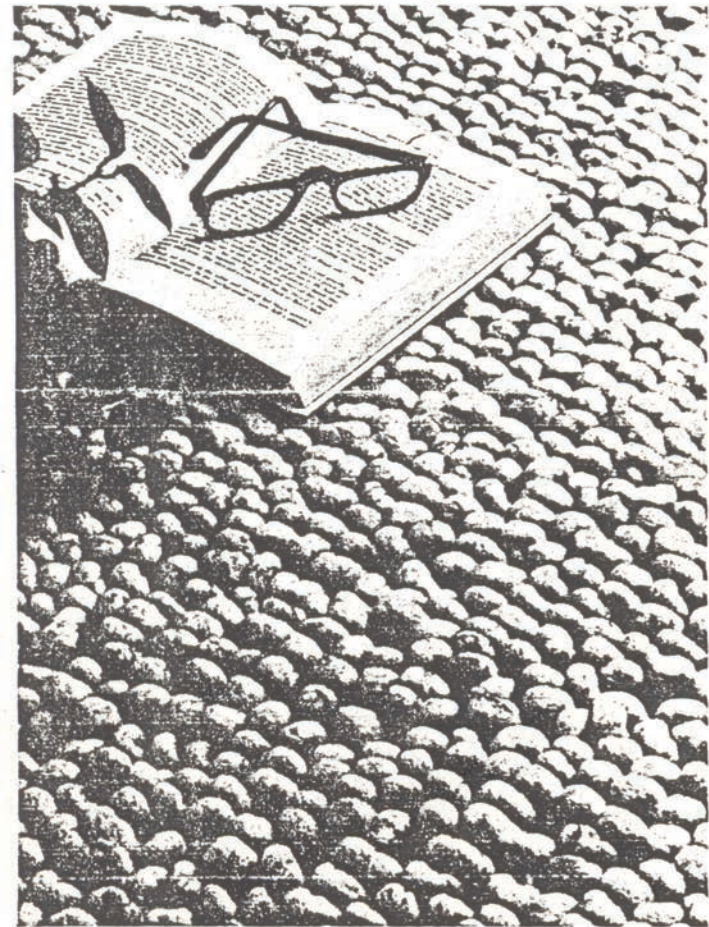
STONE AT THE MOMA

Stone at the Museum of Modern Art in New York

18 November 1985 marks a very special day for B.I.C.-Carpets. It was on that day that Arthur Drexler, the Director of the Museum of Modern Art in New York, announced the entry of the Stone into the Museum's permanent collections. 'Stone' got the recognition it deserved.

FLOOR COVERING WEEKLY, MAY 19, 1986

Museum Adds Wool Rug To Collection



Available from Concepts International, Stones is now a part of New York's Museum of Modern Art's permanent Architecture and Design Collection.

NEW YORK—The Museum of Modern Art, here, has selected a wool rug for its permanent Architecture and Design Collection.

The rug, Stones, has a highly accented texture woven from felted wool yarns by B.I.C., Belgian International Carpets.

It is available from Concepts International in three rug sizes plus specials, and 6-foot, 7-inch wide broadloom in four earth colors.



The Museum of Modern Art

Arthur Drexler
Director
Department of
Architecture and Design
212-705-9547

December 20, 1985

Mr. Lucien Vlerick
52 Avenue Saint Sebastian
8500 Kortrijk Belgium

Dear Mr. Vlerick:

It is my great pleasure to inform you that, at its November 18, 1985 meeting, the Architecture and Design Committee agreed to include your Ivory "B.I.C. Stone" Carpet in our Design Collection. We are very pleased to have the carpet and, on behalf of the Trustees, we wish to thank you for your generous gift.

Sincerely,

Arthur Drexler



Tosh

LUXURY COLLECTION

Colors



1860 cold grey



1880 sandy brown



1820 charcoal



1870 white

Tosh

Choose Tosh for a luxurious rug with a timeless character. This premium wool rug is made in Belgium and available in 4 commercial colors. The unique properties of wool ensure that you will enjoy your carpet for years to come. Suitable for all applications within your home, both as a finished or wall-to-wall carpet. The shape of this product can be personalized.

Technical information

sizes: available in broadloom & rugs

wilton woven: looppile

pile composition: 100% wool

pile weight: ca. 3200 g/m²

total weight: ca. 4150 g/m²

pile height: ca. 17 mm

total height: ca. 20 mm

backing: PES/cotton, jute & latex

width: 4 m

use: residential & light commercial use

04 Contract collection

B.I.C.-Carpets has always invested in the search for carefully crafted carpets that can answer to the needs of every generation. As a result our strength lies in using natural materials that can last up to a lifetime.

Our continuous search to be innovative is what makes us who we are today, offering you versatile and iconic carpets. We aim to provide our customers with qualities that match their projects with conviction.





Atrium

CONTRACT COLLECTION

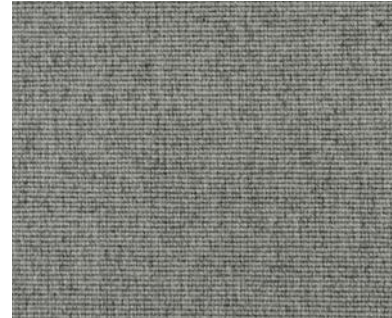
Colors



1150



0560



0530



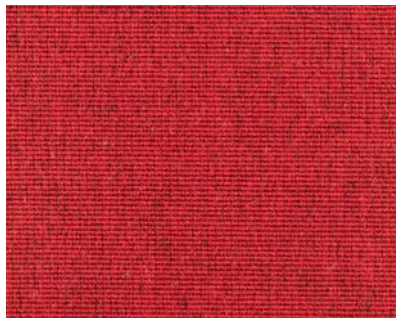
0470



0340



0320



0270



0130



0120

Atrium

Atrium is a collection carpets in a blend of 80 percent pure new wool and 20 percent polyamide in a low profile rib design. The collection is certified in accordance with European quality standard EN 1307. The carpets are Class 32 certified, making them suitable for use in public areas such as offices, waiting areas and hotel lobbies.

Technical information

sizes: broadloom

wilton woven: woven contract looppile

pile composition: 80% wool, 20% polyamide

pile weight: ca. 630 g/m²

pile height: ca. 2 mm

total height: ca. 3,5 mm

total weight: 2000 g/m²

backing: textile

width: 4m

use: class 33 extra heavy contract



Forum

CONTRACT COLLECTION

Colors



0130



0280



0330



0450



0460



0530



0560



0570



1150

Forum

Forum is a collection carpets in a blend of 80 percent pure new wool and 20 percent polyamide in a beautifully textured design. The collection is certified in accordance with European quality standard EN 1307. The carpets are Class 32 certified, making them suitable for use in public areas such as offices, waiting areas and hotel lobbies.

Technical information

sizes: Broadloom

pile composition: 80% wool, 20% polyamide

wilton woven: Woven contract looppile

pile weight: ca. 630 g/m²

total weight: ca. 2000 g/m²

pile height: ca. 2 mm

total height: ca. 3,5 mm

backing: textile

width: 4 m

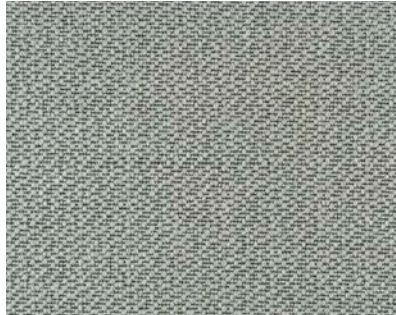
Use: class 33 extra heavy contract



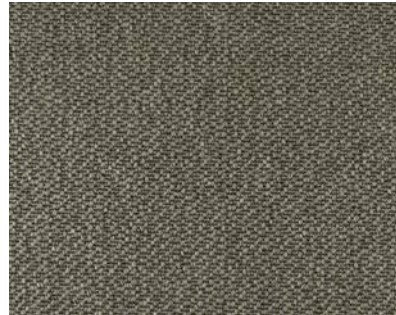
Helix

CONTRACT COLLECTION

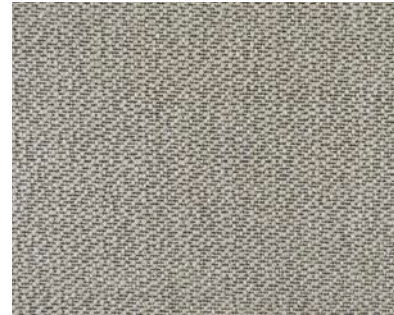
Colors



1110



0940



0920



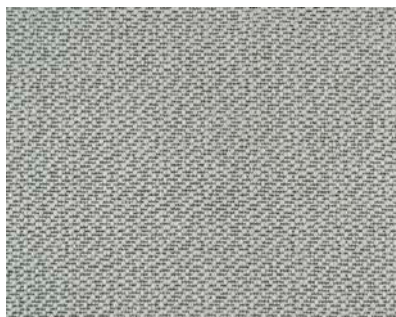
0910



0560



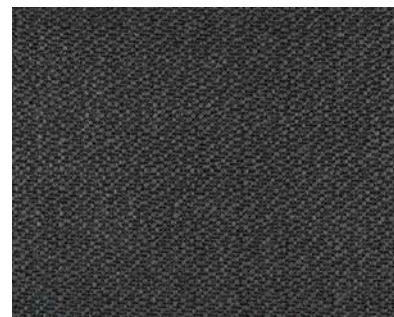
0120



0100



0070



0010

Helix & Helix tiles

Helix is available as broadloom carpet or as carpet tiles in size 48 x 48 cm, introducing a random pattern ideal for monoethnic installation. The carpet is designed in an attractive, flat-woven quality and is produced from 100 % durable polyamide. This stands for high-quality, and is particularly suitable for use in areas with high traffic.

Technical information

sizes: Broadloom & tiles

wilton woven: woven contract loop-pile

pile composition: 100% polyamide

pile weight: ca. 630 g/m²

total weight: ca. 2000 g/m²

pile height: ca. 2 mm

total height: ca. 3,5 mm

width: 4 m

use: class 33 extra heavy contract



Heritage

CONTRACT COLLECTION

Colors



1540 ice grey



1541 canvas



1542 sand



1544 tan



1543 clay



1545 antracite



1546 cold lava



1547 storm grey



1548 bohemian



1549 purple zinc

Heritage

Technical information

sizes: available in all standard sizes, special sizes & broadloom

wilton woven: cutpile

pile composition: 80% pure wool - 20% PA

pile weight: ca. 2010 g/m²

total weight: ca. 3100 g/m²

pile height: ca. 7,5 mm

total height: ca. 9 mm

width: 4 m

use: class 33 commercial heavy



CONTRACT COLLECTION

Colors



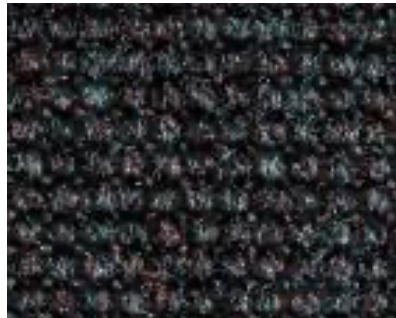
0120



0130



0150



0170



0510

Impact

Impact & Impact tiles is a collection which is ideal for minimalist interior projects. Impact is also available as broadloom. The carpet tiles are designed in an attractive, flat-woven quality. They are produced from 100 % durable polyamide. These are therefore high-quality carpets, which are particularly suitable for use in areas with high traffic.

Technical information

sizes: Broadloom & tiles

wilton woven: woven contract looppile

pile composition: 100% polyamide

pile weight: ca. 785 g/m²

total weight: ca. 2200 g/m²

pile height: ca. 2 mm

total height: ca. 3,5 mm

backing: textile

knots: 140.000/m²

width: 4 m

use: class 33 extra heavy contract



Mira

CONTRACT COLLECTION

Colors



7120



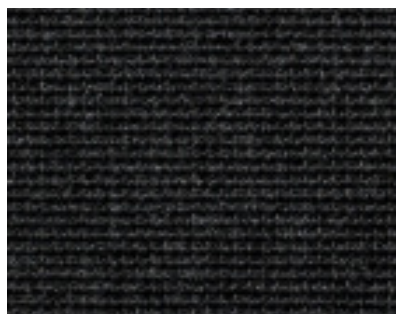
4160



2140



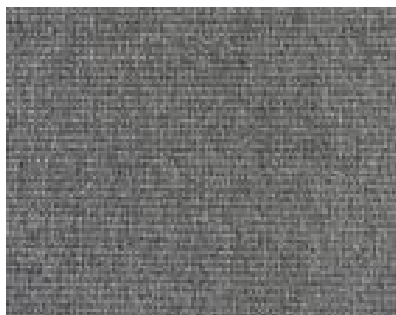
0570



0180



0140



0120

Mira

Mira is a collection of attractively-priced carpet tiles that also meet every quality requirement. This collection consists of 3 designs and is also available as broadloom. The fine, small loops in the carpet's structure give the collection a minimalist and stylish look.

Technical information

sizes: broadloom & tiles

wilton woven: woven contract looppile

pile composition:

100% polyamide, solution dyed

pile weight: ca. 500 g/m²

total weight: ca. 2100 g/m²

pile height: ca. 2 mm

total height: ca. 3.5 mm

width: 4 m

backing: textile

use: class 33 heavy commercial use

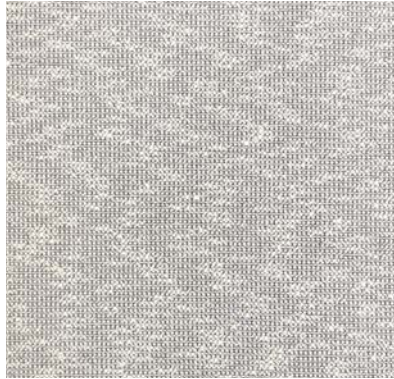


5 Flat woven luxury

Grove

FLAT WOVEN LUXURY COLLECTION

Colors



kanzan



cedar



mangrove



sato

Grove

Family is like branches of a tree, we grow in different directions yet our roots remain as one.

Meet our GROVE family, which are all flatwoven luxury carpets. And just like every member of a family, each design has its unique characteristics.

Technical information

sizes: standard with 4m

pile composition: Wool / effect yarn

pile weight: 425-720 g/m²

total weight: ca. 2150-1450 g/m²

pile height: ca. 3-5 mm

total height: ca. 7-9 mm

use: residential use

06 Handtuft collection

The handtuft technique establishes high quality and offers endless possibilities in design. All kinds of textures, such as different heights by shearing, cut vs loop pile and carving can be applied. Carving can establish a 3D effect for your carpet. You can use a pattern, but you don't have to, the choice is totally up to you.

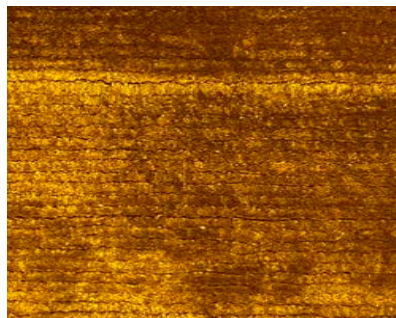


Club design



HANDTUFT COLLECTION

Designs



Line



Herringbone



Square



Wave

Club Design

5 unique designs to take your interior project to the next level. Choose between Club Design wave, organic, herringbone square and line, and then select the desired color. Made of a pleasant combination of the natural fibers wool and lyocell to complete your dream interior. Also possible in fine wool.

Technical information

sizes: available in broadloom & rugs
pile composition: 80% lyocell - 20% wool
pile weight: ca. 4400 g/m²
total weight: ca. 5400 g/m²
pile height: ca. 16 mm
total height: ca. 18 mm
backing: PES/cotton, jute & latex
max. size without a seam: 410x800 cm
use: residential & light commercial use

Possible with every color of the lyocell pom box, see page 103.



Club design

HANDTUFT COLLECTION

Colors wave



still wave



tropical wave



bronze



atlantic wave



pacific wave



ice wave



gold wave



iron wave

Colors herringbone



herringbone white



herringbone marlin



herringbone bass



herringbone corvina



herringbone jack



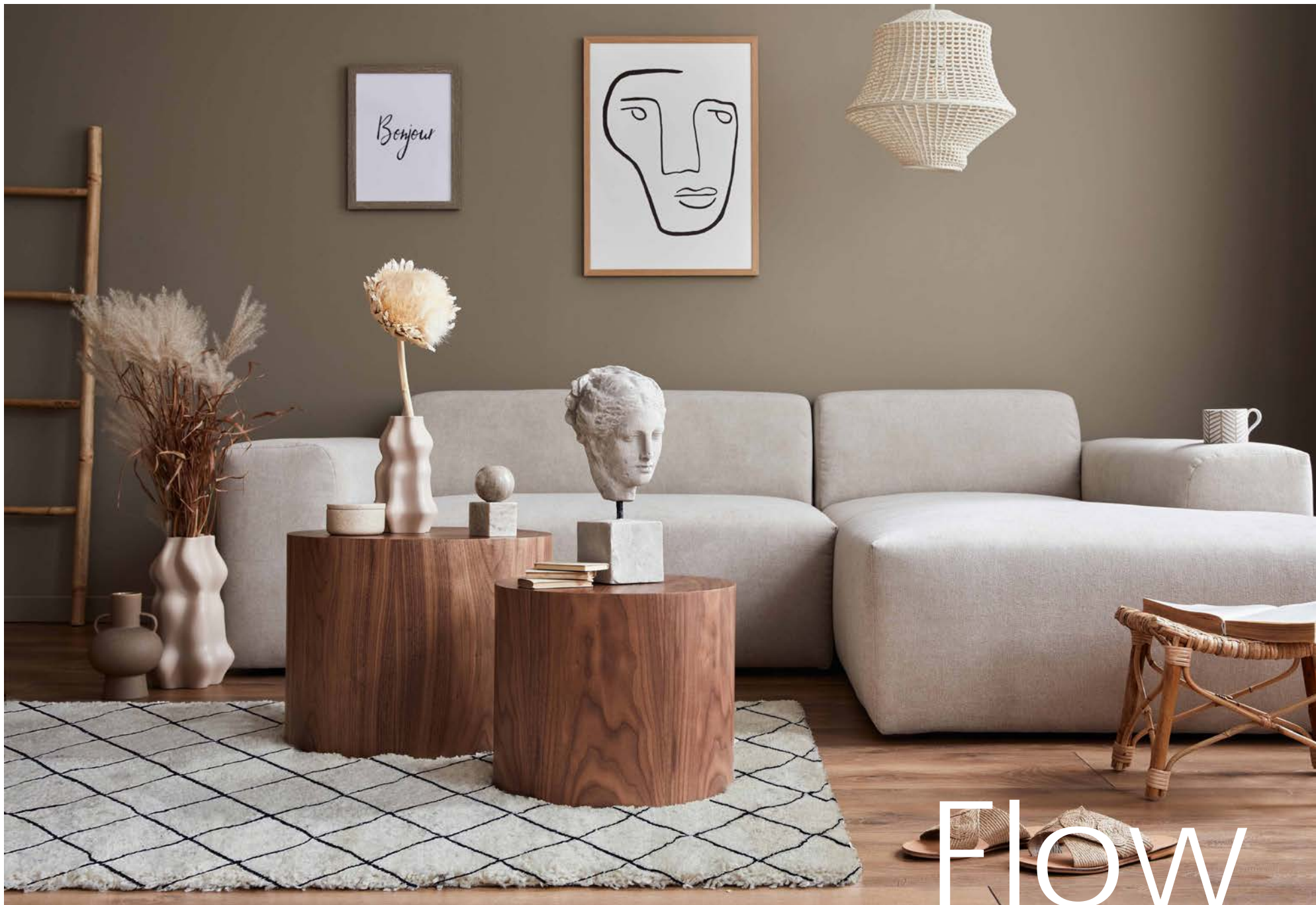
herringbone grouper



herringbone arowana



herringbone mullet



FLOW

HANDTUFT COLLECTION

Colors fine wool



Flow

Flow is a 28 or 40 mm long pile of subtle and warm fine New Zealand wool. The softness of the yarn and the brightness of the colors will provide you a long lasting pleasure. Flow wool has a natural elasticity and is also naturally resistant to dirt. A wool rug creates a visually interesting focal point in any interior.

Technical information

sizes: available as a finished rug and wall to wall carpet

pile composition:

100% fine New Zealand wool

pile weight: ca. 3600 g/m² - or 4200 g/m²

total weight: ca. 4600 g/m² - or 5200 g/m²

pile height: ca. 28 - 40 mm

total height: ca. 30 - 42 mm

max. size without a seam: 410 x 800 cm

use: residential and light commercial use



FLY

HANDTUFT COLLECTION

Colors fine wool



Fly

Fly is a long pile of subtle and warm New Zealand wool. The softness of the yarn and the brightness of the colors will provide you a long lasting pleasure. Fly wool has a natural elasticity and is also naturally resistant to dirt. A wool rug creates a visually interesting focal point in any interior.

The difference between Fly Mesh & Flow is the thickness of the lines. For Flow, the lines have half the thickness of the lines of Fly Mesh

Technical information

sizes: available as a finished rug and wall to wall carpet

pile composition:

100% fine New Zealand wool

pile weight: ca. 3600 g/m² - or 4200 g/m²

total weight: ca. 4600 g/m² - or 5200 g/m²

pile height: ca. 28 - 40 mm

total height: ca. 30 - 42 mm

max. size without a seam: 410 x 800 cm

use: residential and light commercial use



Fly Mesh

HANDTUFT COLLECTION

Colors



FW 727 - 302



FW 302-311



FW 609 - 602



available in all fine wool colors

Fly Mesh

Fly Mesh is a 28 or 40 mm long pile of subtle and warm fine New Zealand wool. The softness of the yarn and the brightness of the colors will provide you a long lasting pleasure. Fly Mesh wool has a natural elasticity and is also naturally resistant to dirt. A wool rug creates a visually interesting focal point in any interior.

The difference between Fly Mesh & Flow is the thickness of the lines. For Flow, the lines have half the thickness of the lines of Fly Mesh

Technical information

sizes: available as a finished rug and wall to all carpet

pile composition:

100% fine New Zealand wool

pile weight: ca. 3600 g/m² - or 4200 g/m²

total weight: ca. 4600 g/m² - or 5200 g/m²

pile height: ca. 28 - 40 mm

total height: ca. 30 - 42 mm

max. size without a seam: 410 x 800 cm

use: residential and light commercial use



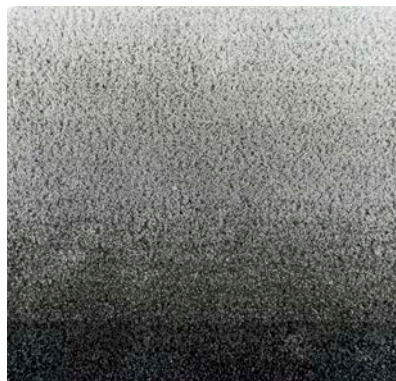
Gradient Fine Wool

HANDTUFT COLLECTION

Colors



301-705-710-727-618



311-316-305-307-609



651-652-653-654-617



732-731-730-710-301



available in all fine wool colors

Gradient fine wool

Enjoy the magical visual effects of Gradient, made of 100% fine New Zealand wool. The softness of the yarn and the brightness of the colors will provide you a long lasting pleasure. Fine wool has a natural elasticity and is also naturally resistant to dirt. A Gradient rug creates a visually interesting focal point in any interior. Choose your color palette from the fine wool pom box and we'll create your unique rug.

Technical information

sizes: available as a finished rug and wall to wall carpet

pile composition: 100% fine wool

pile weight: ca. 3800 g/m²

total weight: ca. 4800 g/m²

pile height: ca. 14 mm

total height: ca. 16 mm

max size without a seam: 410 x 800 cm

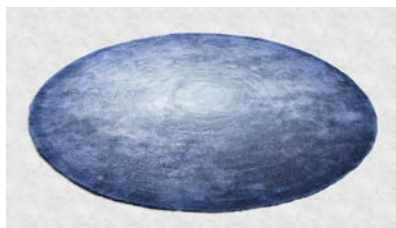
use: residential and light commercial use



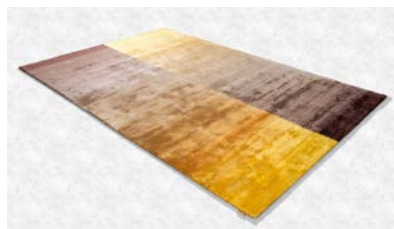
Gradient Lyocell

HANDTUFT COLLECTION

Designs gradient lyocell



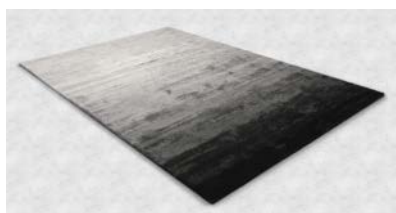
sphere



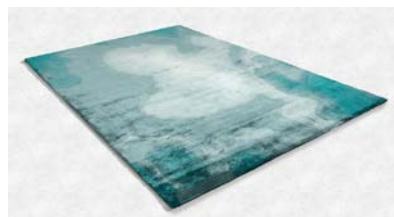
fog



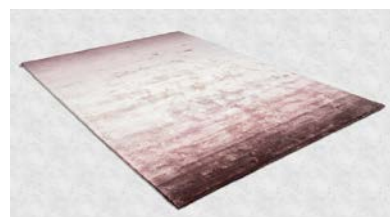
frame



crossing 6330



aquarel



curve



available in all lyocell colors, see page 93

Gradient Lyocell

Gradients offer a wide variety to choose from. Enjoy the magical visual effects of 100% lyocell. Gradient lyocell is a unique carpet that enhances your interior projects with its brilliance. Lyocell is made from a sustainable nature-based cellulose fiber, in this case wood chips from the eucalyptus tree. This gives the fiber the cool feel of linen in the summer and the pleasant warm feel of wool in the winter.

Technical information

sizes: available as a finished rug and wall to wall carpet

pile composition: 100% lyocell

pile weight: ca. 5000 g/m²

total weight: ca. 6000 g/m²

pile height: ca. 12 mm

total height: ca. 14 mm

max size without a seam: 500 x 890 cm

use: can be used for residential or commercial projects



HANDTUFT COLLECTION

Colors Lyocell

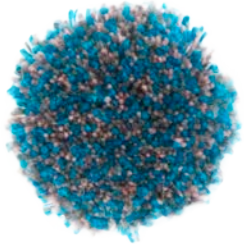




Grid

HANDTUFT COLLECTION

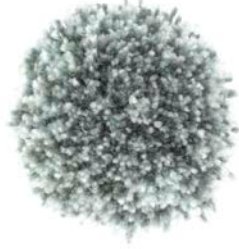
Colors



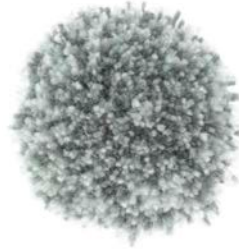
22



47



64



40



8



57



3

Grid

With a subtle mix of wool and lyocell, this hand tufted carpet shines like a diamond. Pick one of the available combinations and enjoy the look and feel of this astonishing rug.

Technical information

sizes: available as a finished rug and wall to wall carpet

pile composition: 70% lyocell - 30% fine wool

pile weight: ca. 4400 g/m²

total weight: ca. 5400 g/m²

pile height: ca. 20 mm

total height: ca. 22 mm

max size without a seam: 410 x 800 cm

use: residential use



Gravel

HANDTUFT COLLECTION

Colors



10 ivory



11 sand



30 dim grey



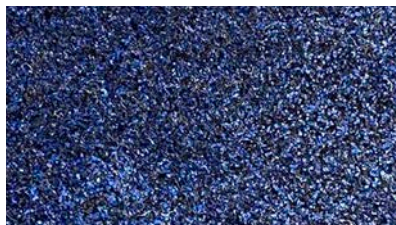
35 mushroom



36 smoke



15 silver



42 admiral



45 robin egg



50 cypress



63 verdun

Gravel

From a subtle mix of fine wool and lyocell was born our new collection Gravel, a silky soft feeling with a shiny brilliance. A unique combination for any interior. Choose one of the ten available colors and enjoy the look and feel of this wonderfully soft rug.

Technical information

sizes: available as a finished rug and wall to wall carpet

pile composition: 60% fine New Zealand wool - 40% lyocell

pile weight: ca. 4400 g/m²

total weight: ca. 5400 g/m²

pile height: ca. 20 mm

total height: ca. 22 mm

max size without a seam: 410 x 800 cm

use: residential use



Mecca

HANDTUFT COLLECTION

Colors



White

Mecca

Experience the warmth and softness of Mecca, made of 100% wool. **Standard color is white, color on demand upon request.**

Technical information

sizes: available as a finished rug and wall to wall carpet

pile composition: 100% wool

pile weight: ca. 3500 g/m²

total weight: ca. 4500g/m²

pile height: ca. 30 mm

total height: ca. 32 mm

max. size of handtuft carpet without a seam:
500 x 890 cm

use: residential use



Medina

HANDTUFT COLLECTION

Colors



Ivoire

Medina

By mixing high pile wool with viscose, the magical surface of Medina was brought to life.

Technical information

sizes: available in broadloom & rugs

pile composition: 60% wool - 40% viscose

pile weight: ca. 3500 g/m²

total weight: ca. 4500 g/m²

pile height: ca. 30 mm

total height: ca. 32 mm

max. width without a seam: 410 x 800 cm

use: residential use



Parker

HANDTUFT COLLECTION

Colors fine wool



Parker

Parker features a low pile height from subtle and warm New Zealand wool. The softness of the yarn and the brightness of the colors provide long-lasting pleasure. BIC handtufted rugs are created with the finest materials. Made in Europe, unique warm look & feel and manufactured with natural fibers.

With Parker you choose a durable luxury carpet. Wool has a natural elasticity and is also naturally stain resistant. Your ideal choice for a low maintenance carpet.

Technical information

sizes: available as a finished rug and wall to wall carpet

pile composition:

100% fine New Zealand wool

pile weight: ca. 3800 g/m²

total weight: ca. 4800 g/m²

pile height: ca. 16 mm

total height: ca. 18 mm

max. width without a seam: 500 x 890 cm

Use: moderate commercial use, customization is possible



HANDTUFT COLLECTION

Colors wool



more available colors: see next page

Queen

Queen is a compact 14 mm pile, made from a high quality wool selection. The softness of the yarn, the brightness of the colors will provide you a long lasting pleasure. Wool has a natural elasticity and is also naturally resistant to dirt. Queen is a very versatile quality for incorporating drawings and patterns into your projects.

Technical information

sizes: available as a finished rug and wall to wall carpet

pile composition: 100% wool

pile weight: ca. 4000 g/m²

total weight: ca. 5000 g/m²

pile height: ca. 14 mm

total height: ca. 16 mm

Max. size of handtuft carpet without a seam:
500 x 890 cm

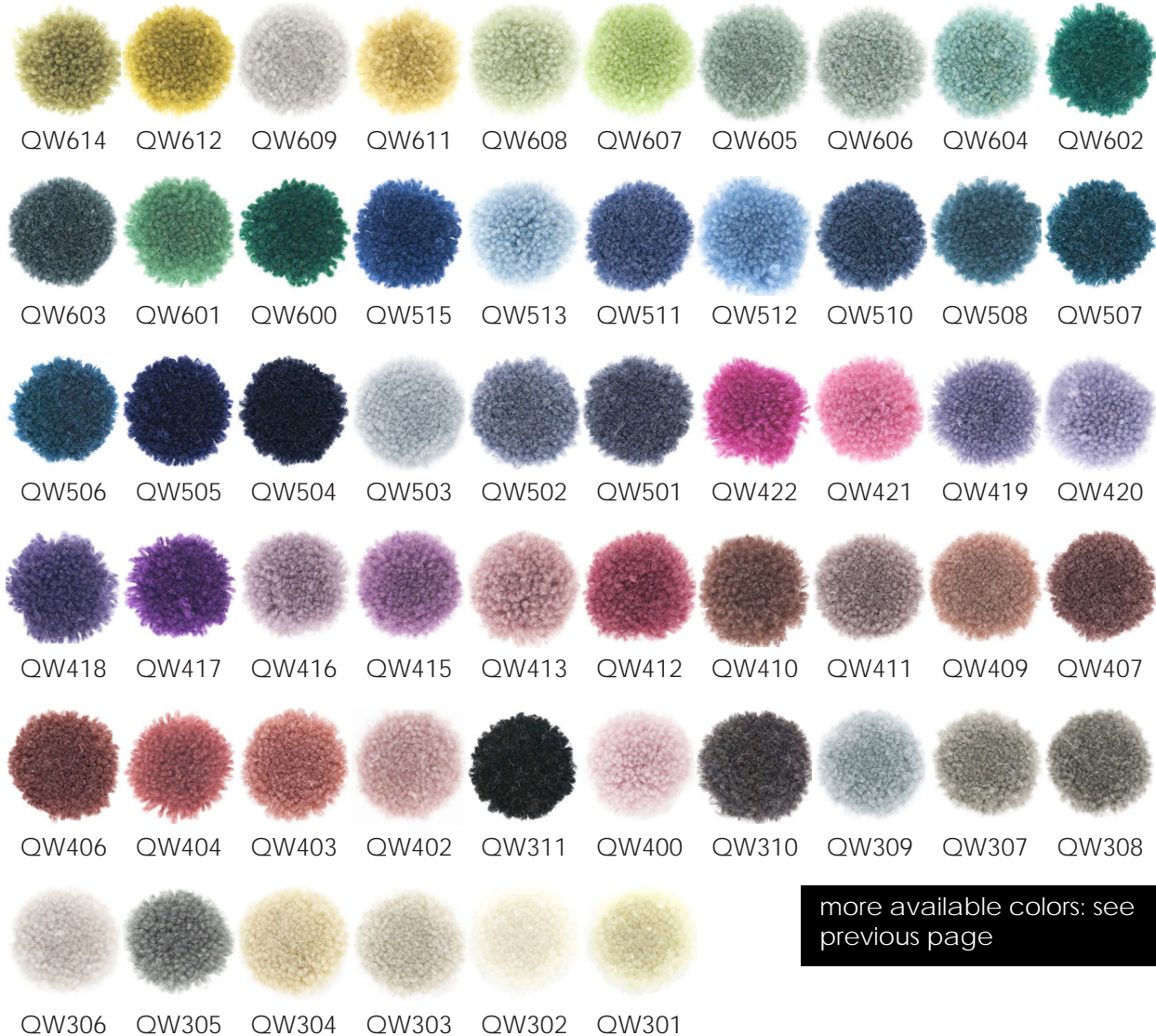
use: commercial or residential use



Royal

HANDTUFT COLLECTION

Colors wool



more available colors: see previous page

Royal

Royal is a compact 10 mm pile, made from a high quality wool selection. The softness of the yarn, the brightness of the colors will provide you a long lasting pleasure. Wool has a natural elasticity and is also naturally resistant to dirt. Royal is a very versatile quality for incorporating drawings and patterns into your projects.

Technical information

sizes: available as a finished rug and wall to wall carpet

pile composition: 100% wool

pile weight: ca. 3500 g/m²

total weight: ca. 4500 g/m²

pile height: ca. 10 mm

total height: ca. 12 mm

max. size of handtuft carpet without a seam:
500 x 890 cm

use: commercial or residential use



Shadow 2.0

HANDTUFT COLLECTION

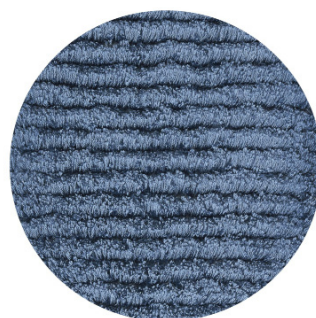
Colors



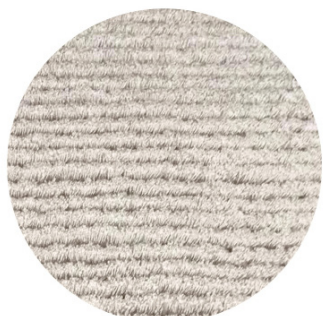
304



503



506



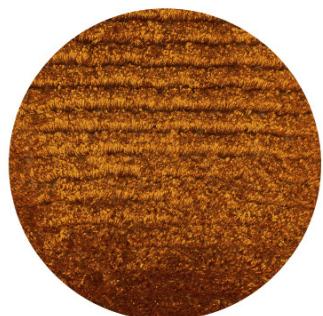
609



711



733



810



700



available in all lyocell colors, see page 113

Shadow 2.0

As a renewed version of our well known Shadow collection, we present Shadow 2.0 to you. Looking for a handtufted carpet with a shiny luxurious look and feel? This collection will create a unique atmosphere to your interior, providing the finishing touch to the decoration of your home! Shadow 2.0 exists of 8 colors, or you can choose a color from our lyocell pom box. Looking for an eyecatcher or a neutral luxury carpet? Meet Shadow 2.0

Technical information

sizes: available in broadloom & rugs

pile composition: 80% lyocell - 20% wool

pile weight: ca. 4800 g/m²

total weight: ca. 5800 g/m²

pile height: ca. 16 mm

total height: ca. 18 mm

max. width without a seam: 410 x 800 cm

use: residential use



HANDTUFT COLLECTION

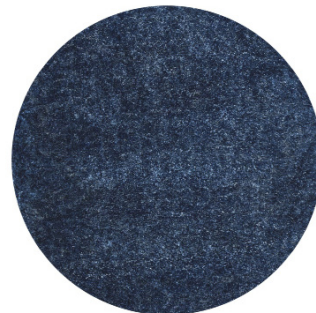
Colors



304



503



506



609



711



733



810



700



available in all lyocell colors, see page 98

Trinity

The glossy yarn is velvety soft and gives your interior a luxurious look. Lyocell is made from a natural and durable cellulose fiber, in this case eucalyptus wood chips. The fibers have an exceptionally smooth and silky surface.

The Trinity collection consists of 8 colors, but is available in more than 60 colors.

Technical information

sizes: available as a finished rug and wall to wall carpet

pile composition: 100% lyocell

pile weight: ca. 5000 g/m²

total weight: ca. 6000 g/m²

pile height: ca. 12 mm

total height: ca. 14 mm

width: max. size of handtuft carpet without a seam: 500 x 890 cm

use: can be used for residential or light commercial projects



HANDTUFT COLLECTION

Colors Lyocell



07 The BIC Designbook

B.I.C.-Carpets has always invested in the search for carefully crafted carpets that can answer to the needs of every generation. As a result our strength lies in using natural materials that can last up to a lifetime.

Our continuous search to be innovative is what makes us who we are today, offering you versatile and iconic carpets. We aim to provide our customers with qualities that match their projects with conviction.



COLOUR OF THE YEAR



Design
Benign blue

Design Benign Blue
original size: 4 x 3 m
composition: 100% tencel
color: 310 - 305 - 700 - 805



NEW!

THE DESIGNBOOK BY B.I.C. CARPETS

The designbook by B.I.C. Carpets is a contemporary and inspiring array of designs for anyone with a passion for interior and tapestry.

On the one hand, it aims to show **the extensive creative possibilities of our handtuft collection** to be a source of inspiration to architects and interior designers.

On the other hand, **each design of this collection can be ordered by our B.I.C. lovers.** Colors can be adjusted on request from the wide color range.

Our request? *Tell us your imagination and we design it together with you!*

**“In crafting there are no mistakes,
only unique creations”**



Architecture of life

A modern set of geometric and sleek styled designs in neutral and soft colors... Are you looking for that little bit more? This selection also harbors a range of black and white designs to fine line drawings.



Colony of the earth

A colonial chic collection in a range of rich terrestrial tones, gentle on the eye and gentle on the feet. head to toe inspired by the crafts of nature alongside with the artistic interpretation of different warm cultures.





Riches of time

Wisdom comes with the years? Yeah, affirmative. Beauty deepens with time? Absolutely. Come here for the profound colors of life and the richness of the classics, all dressed up to shine like stars.



Paradise of heaven

Paradise of heaven stands for paradisiacal designs of fauna & flora and heavenly playful designs in sparkling colors. The child in us came to the surface when this collection was born.



But what is a handtufted rug?

The handtuft technique establishes high quality and offers endless possibilities in design.

All kinds of textures, such as differences in height by shearing, cut vs looppile and carving can be applied.

Carving can establish a 3D effect for your carpet.

You can use a pattern, but you don't have to, the choice is totally up to you.

The creation of your handtufted carpet begins with an **idea, a choice in material and a color palette**. That's all you need.

B.I.C. Carpets turns your idea into a proposal, after discussing all the requirements and possibilities in order to produce the final design artwork. If necessary, we adjust until it fits your needs. The design is approved?

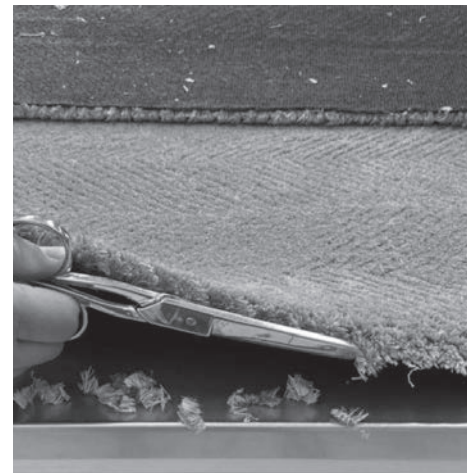
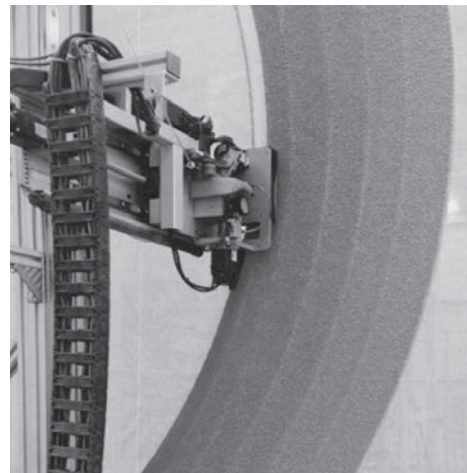
Then it's time to tuft.

The entire artwork is printed onto a canvas that is stretched tight on a frame. Complex designs are draft by hand on the canvas, by projecting from the screen on the canvas. A sure sign of craftsmanship, right?

With a special compressed air gun the tufters shoot little U-shaped tufts of **wool, fine wool or lyocell** through the cloth, filling the pattern with the right colors. Sometimes, also the robot is used to create a part of the design.

This tufting gun is fitted with tiny scissors to determine the pile height. After the design is complete, the **backing** is applied to the carpet and it's time to dry. To finalize the piles are sheared to the required height and the finishing touch is done by hand. All **carving** gets done manually.

Your carpet is ready for departure and on it's way to turn your house into a home.







Cleaning & maintenance

Important information

Regular maintenance

Carpets and rugs bearing the B.I.C. Carpets label make a statement about your sense of style and value. And whether you choose a carpet for its quality, durability or beauty, you can maintain its hard wearing, long lasting good looks by remembering to:

- Vacuum regularly
- Remove spills immediately

Vacuuming

Regular and thorough vacuuming once a week (more often in heavy traffic areas) is an economical and effective way to remove soil and dirt particles before they become embedded into the pile of the carpet. For best results, empty your vacuum bag when half full.

Do certainly not use a vacuum cleaner with a brush.

Periodic maintenance

Thorough cleaning is required periodically to remove the deepest soil. There are many deep cleaning methods you can use to ensure the beauty and life of your carpet or rug. When having your carpet professionally cleaned, use a reputable company and check references.



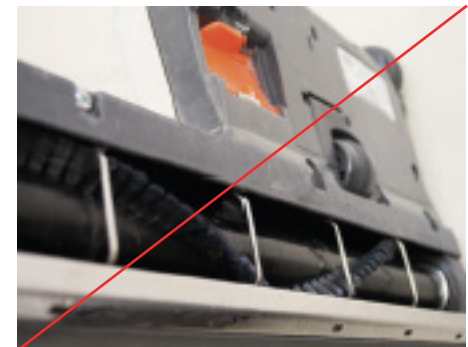
without brush ✓



✗ with brush



clean with a damp cotton cloth ✓



✗ with rotating brush

To protect your carpet from the B.I.C. Carpets collection, it's very important to do a periodic maintenance. In this way you'll keep your carpet in good shape. The life of your carpet will increase significantly by cleaning your carpet at regular intervals.

Don't wait until your carpet is seriously soiled.

You can consider that extending the life span of your carpet will be the perfect return on investment. Properly maintained carpets enhance the appearance and atmosphere of an interior, at home and in the project environment.

A well cared carpet absorbs dirt, dust particles from the air, smoke and noise. It provides a hygienic interior. Maintenance makes sense. A simple maintenance program including regular, interim and periodic cleanings will keep your carpet looking as good as the day it was installed!

Preventative measures

- Place absorbent mats at entrances to your home; change or wash when dirty.
- Regularly change filters in your heating and air conditioning systems.
- Periodically clean traffic lanes and in front of frequently used chairs with an absorbent powder.
- Do not apply stain repellent treatments containing any silicone, because they tend to accelerate carpet soiling.

Finishing

How will the finishing of my new carpet look?

Did you know that all our finishing is done by hand? Craftmanship at it's finest.



For **wilton woven** qualities: Atrar – Blitz – Chelha – Galaxy – Harbor – Haven – Holden – Heritage – Impulse – Isul – Luna – Magic – Nature – Nautilus – Pavé berberi – Pavé the luxe – Siwa – Softline – Stone – Tosh

Finishing: **American border**. Color of the border in accordance with the color of your carpet. Depending on the height of the quality, this will be visible.

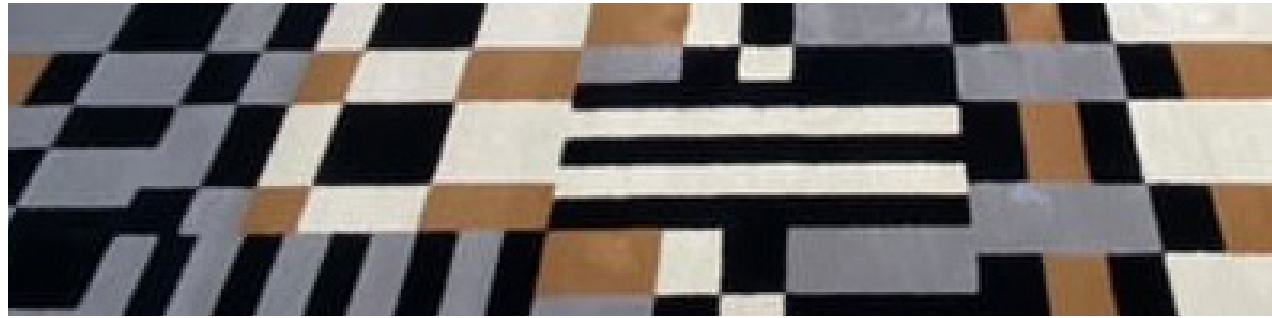
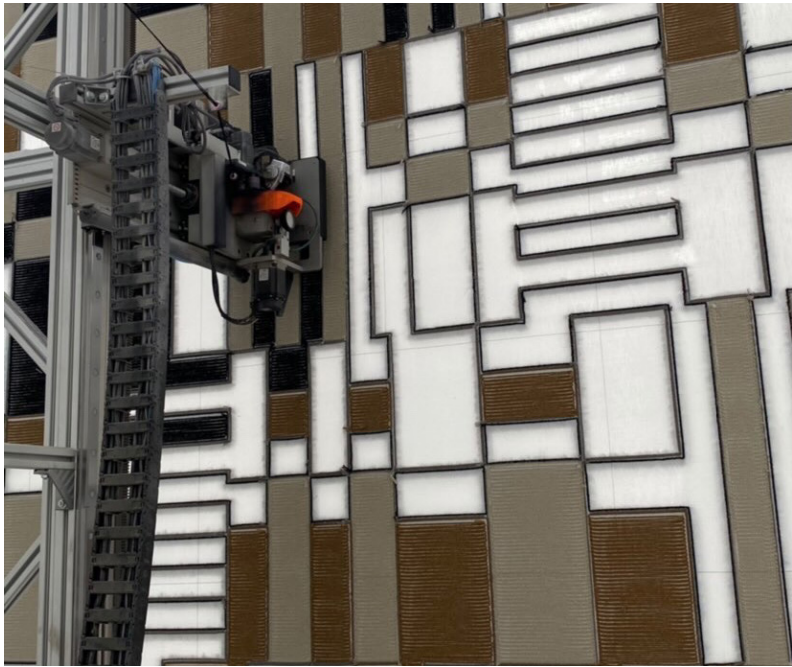


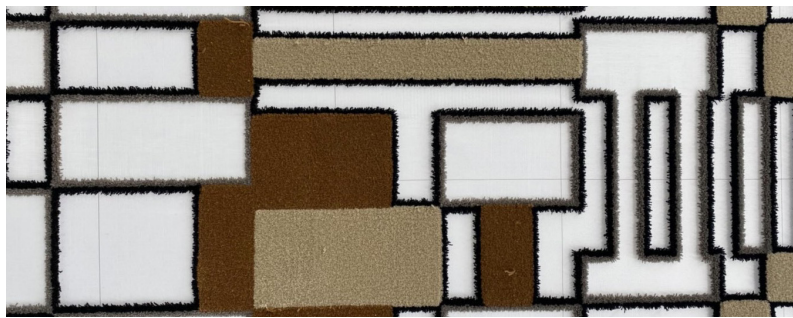
For **handtufted** qualities: Club Design – Cilou – Eden – Flow – Fly (Mesh) – Gradient Lyocell – Gradient Fine Wool – Gravel – Grid – Mecca – Medina – Parker – Queen – Royal – Shadow 2.0 – Trinity – custom design projects

finishing: **black invisible border**

References

Interieurlabo 05 (BE) - Galaxy	pg. 5
Moyson - Derveaux architects (BE) - photography: Stephaniemathias Photography - Chelha	pg. 20
Topp&Legg (BE) - Eden & Cilou	pg. 22
Van Waay & Soetekouw (NL) - Galaxy	pg. 28
Peeters Van Leeuw (BE) - Harbor	pg. 32
Raw interiors (NL) - Haven	pg. 34
Artop design (NL) - Holden	pg. 36
Vandermeeren (BE) - Isul	pg. 42
Het huis met duizend ramen (NL) - Magic	pg. 46
Topp&Legg (BE) - Miro	pg. 48
Delmi Decor (BE) - Nautilus	pg. 52
Architects office: studiomk27- photography: Nelson Kon (BR) - Stone	pg. 60
David Bulckaen (BE) - Heritage	pg. 74
Topp&Legg (BE) - Grove	pg. 80
Devos interieur (BE) - Club design	pg. 84
Vlatex Home - Fly	pg. 90
Linda Lagrand interiors (NL) - Gradient fine wool	pg. 94
Delmi decor (BE) - Gradient lyocell	pg. 96
D/Dock (NL) - Grid	pg. 100
Topp&Legg (BE) - Parker	pg. 108
D/Dock (NL) - Queen & Royal	pg. 110 -112
Homestede (NL) - Shadow 2.0	pg. 114
Dekotap & Bravosix interior design (BE) – Trinity	pg. 116
Homestede (NL) – Trinity	pg. 118
MCM Architecture & Loughton Contracts (UK) - Queen	pg. 130
Pubblik & Vos - Holmris B8 - photography: Phenster Mark Kuipers - Queen	pg. 136





bic.
LUXURY CARPETS

 **meinema**
interieur | ontwerp | uitvoering



info@meinema.nl



0031 - 20 311 8396